



# The new generation of Mains T5 LEDtube lighting

## MASTER LEDtube Mains T5

The new Philips Master LEDtube Mains T5 brings simplicity to your lighting project. You don't need to pay attention to the driver technology anymore. Thanks to a unique design, Philips MASTER LEDtube Mains T5 installs in luminaires operating on mains power connection. So simple to operate! Perfectly safe, reliable & easy to install, the Philips MASTER LEDtube Mains T5 is the ideal alternative to standard fluorescent tubes to maximise value over lifetime with high energy savings and lower maintenance costs.

### Benefits

- Reduced operational cost thanks to lower energy consumption
- Lower maintenance cost thanks to a longer lifetime than conventional lamps
- The fastest and easiest way to upgrade existing luminaires to LEDtechnology; completely safe product and installation process

### Features

- Replacement of existing T5 lamps: operates with a mains power connection
- Energy savings compared with fluorescent tubes
- Long lifetime
- No mercury

### Application

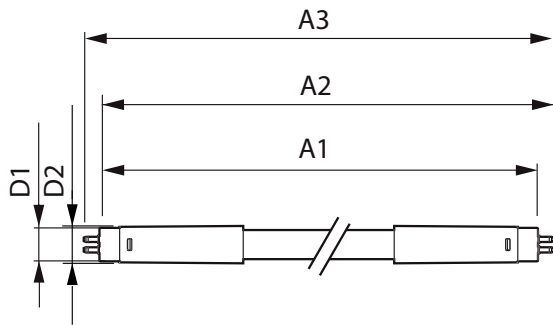
- Offices, shops, classrooms
- Industrial facilities and warehouses

# MASTER LEDtube Mains T5

## Versions



## Dimensional drawing



Product	D1	D2	A1	A2	A3
MASTER LEDtube 1500mm HO 26W 830 T5	15 mm	16.9 mm	1449 mm	1456.1 mm	1463.2 mm
MASTER LEDtube 1500mm HO 26W 865 T5	15 mm	16.9 mm	1449 mm	1456.1 mm	1463.2 mm
MASTER LEDtube 1500mm HO 26W 840 T5	15 mm	16.9 mm	1449 mm	1456.1 mm	1463.2 mm

# MASTER LEDtube Mains T5

## Approval and Application

Energy Consumption kWh/1000 h	26 kWh
Energy Efficiency Label (EEL)	A++

## Controls and Dimming

Dimmable	No
----------	----

## Operating and Electrical

Input Frequency	50 to 60 Hz
Voltage (Nom)	220-240 V
Power (Rated) (Nom)	26 W
Starting Time (Nom)	0.5 s

## General Information

Cap-Base	G5
Nominal Lifetime (Nom)	50000 h
Switching Cycle	200,000X

## Light Technical

Beam Angle (Nom)	200 °
Colour Rendering Index (Nom)	80
Llmf At End Of Nominal Lifetime (Nom)	70 %

## Mechanical and Housing

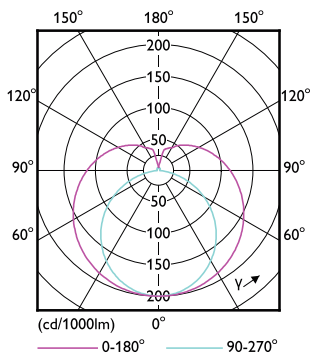
Bulb Shape	Tube, double-ended
------------	--------------------

## Temperature

T-Ambient (Max)	45 °C
T-Ambient (Min)	-20 °C
T-Case Maximum (Nom)	67.4 °C
T-Storage (Max)	65 °C
T-Storage (Min)	-40 °C

## Light Technical

Order Code	Full Product Name	Colour Code	Correlated Colour Temperature (Nom)	Luminous Flux (Nom)
81929600	MASTER LEDtube 1500mm HO 26W 830 T5	830	3000 K	3600 lm
81931900	MASTER LEDtube 1500mm HO 26W 840 T5	841	4000 K	3900 lm
81933300	MASTER LEDtube 1500mm HO 26W 865 T5	865	6500 K	3900 lm



## MASTER LEDtube Mains T5

