



Smart Post-top G3

BGP161 LED2300/WW PSU 220-240V 7043 GM

2300 lm - 27 W - 3000 K

Smart Post Top G3 inherits the classic look and style of the previous generation with improved system efficacy and light quality.;The Smart Post Top G3 optimised optical design increases both horizontal and vertical uniformity. The highly efficient thermal system design ensures maximum heat transfer and longer LED service life.;This reliable luminaire system operates well in both low and high temperature environments. It offers more than 11 years expected life, reducing maintenance frequency and cost (based on a 50,000 hour rated life and 12 hours operation per day);It provides a comfortable and safe atmosphere to gardens, residential areas, courtyards, side streets, squares, parks & playgrounds.

Product data

General information			
Lamp family code	-	CE mark	-
Light source colour	Warm white	ENEC mark	-
Light source replaceable	Yes	Warranty period	3 years
Number of gear units	1 unit	Optic type outdoor	Symmetrical
Driver/power unit/transformer	PSU [Power supply unit]	Constant light output	No
Driver included	Yes	Number of products on MCB (16 A type B)	-
Optical cover/lens type	Acrylate cover and semi-matt high-reflective optic	EU RoHS compliant	Yes
Luminaire light beam spread	-	Light source engine type	LED
Control interface	-	Light technical	
Connection	Flying leads/wires	Upward light output ratio	0
Cable	Cable 450 mm without plug	Standard tilt angle post-top	-
Protection class IEC	Safety class I (I)	Standard tilt angle side entry	-
Flammability mark	F [For mounting on normally flammable surfaces]	Operating and electrical	
		Input Voltage	220 to 240 V

Smart Post-top G3

Input frequency	50 to 60 Hz
Inrush current	2.1 A
Inrush time	22.3 ms
Power factor (min.)	0.9

Controls and dimming

Dimmable	No
----------	----

Mechanical and housing

Housing material	Aluminum die-cast
Reflector material	Acrylate
Optic material	Acrylate
Optical cover/lens material	Acrylate
Fixation material	Stainless steel
Mounting device	60P [Post-top for diameter 60 mm]
Optical cover/lens shape	Flat
Optical cover/lens finish	Frosted
Overall height	265 mm
Overall diameter	578 mm
Effective projected area	0.11 m ²
Colour	Dark gray

Approval and application

Ingress protection code	IP65 [Dust penetration-protected, jet-proof]
Mech. impact protection code	IK07 [2 J reinforced]
Surge protection (common/differential)	4/2 kV

Initial performance (IEC compliant)

Initial luminous flux (system flux)	2300 lm
Luminous flux tolerance	+/-10%
Initial LED luminaire efficacy	85.19 lm/W
Init. Corr. Colour Temperature	3000 K
Init. Colour rendering index	70
Initial chromaticity	(0.43,0.40) SDCM ≤ 5
Initial input power	27 W
Power consumption tolerance	+/-10%

Application conditions

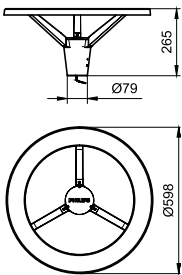
Ambient temperature range	-40 to +50 °C
Maximum dimming level	Not applicable

Product data

Full product code	911401834698
Order product name	BGP161 LED2300/WW PSU 220-240V 7043 GM
Order code	01834698
SAP numerator – quantity per pack	1
Numerator – packs per outer box	2
SAP material	911401834698
Copy Net Weight (Piece)	4.499 kg



Dimensional drawing



BGP161 LED2300/WW PSU 220-240V 7043 GM

Smart Post-top G3

