

PrimaVision Mini for CDM

HID-PV m 35 /S CDM 220-240V 50/60Hz

Miniature HID electronic gear for PGJ5 CDM lamps – freeing up the boundaries of creativity and innovation in luminaire design

Product data

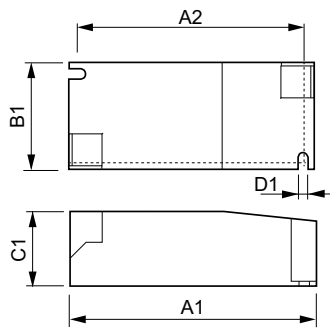
General Information		Constant wattage deviation	
Application code	HPF	Constant wattage deviation	-3%/+3%
Type version	mk2	Power losses (nom.)	5 W
Lamp type	CDM	Inrush current peak (max.)	25 A
Number of lamps	1 piece/unit	Efficiency at full load [%]	86.7 %
Suitable for outdoor use	No	Wiring	
Number of products on MCB (16 A type B) (nom.)	24	Cable capacity output wires mutual (nom.)	50 pF
Automatic restart	Yes	Cable length from device to lamp	0.5 m
Operating and Electrical		Wire strip length	8.5-9.5 mm
Input Voltage	220 to 240 V	Ballast contact wire cross section	0.75-1.50 mm ²
Input frequency	50 to 60 Hz	Connector type	Insert
Minimum mains voltage operation (min.)	198 V	System characteristics	
Power factor 100% load (nom.)	0.95	Rated ballast-lamp power	39 W
Ignition voltage (max.)	4.5 kV	Temperature	
Ignition voltage (min.)	3.3 kV	T-ambient (max.)	50 °C
Ignition switch-off time (nom.)	21 min	T-ambient (min.)	-20 °C
Mains voltage performance (AC)	198-254V	T storage (max.)	80 °C
Mains voltage safety (AC)	180-264V	T storage (min.)	-25 °C
Earth leakage current (max.)	0.5 mA	T-case lifetime (nom.)	85 °C
Inrush current width	0.25 ms		

PrimaVision Mini for CDM

T-Case maximum (max.)	85 °C
Mechanical and Housing	
Housing	/S
Approval and Application	
Active temperature protection	Yes
EMI 9 kHz ... 300 MHz	CISPR 15 ed 7.2 / 2009
Vibration standard	IEC68-2-6 F c
Bumps standard	IEC 68-2-29 Eb
Approval marks	CE marking ENEC certificate VDE certificate
Humming and noise level	< 25 dB(A)

Product Data	
Full product code	871829167161900
Order product name	HID-PV m 35 /S CDM 220-240V 50/60Hz
EAN/UPC – product	8718291671619
Order code	67161900
SAP numerator – quantity per pack	1
Numerator – packs per outer box	12
SAP material	913700696166
SAP net weight (piece)	0.115 kg

Dimensional drawing



HID-PV m 35 /S CDM HPF 220-240V 50/60Hz

Product	D1	C1	A1	A2	B1
HID-PV m 35 /S CDM 220-240V 50/60Hz	4.2 mm	30.2 mm	97.3 mm	88.3 mm	43.3 mm

