



# HID-Basic ballasts for HPL and HPI(PLUS) lamps

## BHL 250L 202

The HID-Basic ballast is an impregnated (HID standard) electromagnetic ballast for HID lamps, for use in combination with an external ignitor.

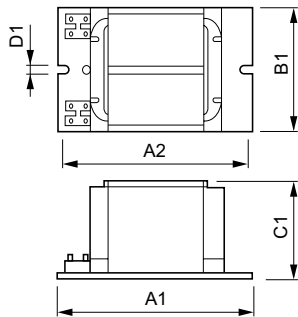
### Product data

| General Information                         |             |
|---|-------------|
| Application code                            | L202        |
| Operating and Electrical                    |             |
| Input Voltage                               | 230 V       |
| Input frequency                             | 50 Hz       |
| Power factor 100% load (min.)               | 0.55        |
| Mains voltage performance (AC)              | -8% - +6%   |
| Mains voltage safety (AC)                   | -10% - +10% |
| Input current with PF correction            | 1.35 A      |
| Input current without PF Correction         | 2.13/2.15 A |
| Power factor without PF compensation (nom.) | 0.85        |
| Power losses (nom.)                         | 20.4 W      |
| Wiring                                      |             |
| Connector type                              | Screw       |
| System characteristics                      |             |
| Rated ballast-lamp power                    | 250 W       |

| Temperature                       |                 |
|-----------------------------------|-----------------|
| T-winding (max.)                  | 130 °C          |
| Delta-T normal conditions         | 75 °C           |
| Approval and Application          |                 |
| Approval marks                    | CE marking      |
| Product Data                      |                 |
| Full product code                 | 871016303125530 |
| Order product name                | BHL 250L 202    |
| EAN/UPC – product                 | 8710163148304   |
| Order code                        | 03125530        |
| SAP numerator – quantity per pack | 1               |
| Numerator – packs per outer box   | 6               |
| SAP material                      | 913710102550    |
| SAP net weight (piece)            | 1.900 kg        |

## HID-Basic ballasts for HPL and HPI(PLUS) lamps

### Dimensional drawing



| Product      | D1     | C1      | A1       | A2       | B1      |
|--------------|--------|---------|----------|----------|---------|
| BHL 250L 202 | 6.3 mm | 64.5 mm | 125.0 mm | 104.0 mm | 72.5 mm |

BHL 250 L202 230V 50Hz

