

# PHILIPS

# Lighting



## HF-Selectalume II for TL5 lamps

### HF-S 114-35 TL5 II 220-240V 50/60Hz

HF-Selectalume II TL5 is the most cost-effective, reliable and outstanding solution for fluorescent lamps. These ballasts are part of an overall high-efficiency lighting system that may help you or your customers to achieve any international or local energy code you need to comply with. HF-Selectalume II TL5 ballasts are the ideal choice for a broad range of new construction and retrofit applications within the commercial sector, including general surface mounting or office lighting, parking garages, warehouses, waterproof and other applications.

#### Product data

General Information	
Application code	HE II
Type version	-
Lamp type	TL5
Number of lamps	1 piece/unit
Number of products on MCB (16 A type B) (nom.)	28
Automatic restart	Yes

Operating and Electrical	
Input Voltage	220 to 240 V
Input frequency	50 to 60 Hz
Operating frequency (nom.)	45 kHz
Crest factor (nom.)	1.7
Power factor 100% load (nom.)	0.99
Preheat time	0.5 s
Mains voltage performance (AC)	202-254V-8%-+6%
Mains voltage safety (AC)	198-264V-10%-+10%

Earth leakage current (max.)	0.5 mA
Inrush current width	0.25 ms
Ballast factor (nom.)	1
Power losses (nom.)	2.0-3.5 W
Inrush current peak (max.)	24 A
Efficiency at full load [%]	93.2 %

Wiring	
Connector type input terminals	WAGO 744 connector
Cable capacity output wires mutual (max.)	200 pF
Connector type output terminals	WAGO 744 connector [ Suitable for manual wiring]
Cable length hot-wiring	0.75 m
Wire strip length	8.0-9.0 mm
Dual fixture master/slave	Possible, lamp wires 2m max. length [ Master/Slave operation possible]
Input terminal cross section	0.50-1.00 mm <sup>2</sup>
Output terminal cross section	0.50-1.00 mm <sup>2</sup>

## HF-Selectalume II for TL5 lamps

Cable capacity cold output wires – earth (max.)	200 pF
Cable capacity hot output wires – earth (max.)	200 pF

### System characteristics

Rated ballast-lamp power	14-35 W
Rated lamp power on TL5 HE	14/35 W
System power on TL5 HE	16.7/40.5 W
Lamp power on TL5 HE	14.7/37.0 W
Power loss on TL5 HE	2.0/3.5 W

### Temperature

T-ambient (max.)	55 °C
T-ambient (min.)	-20 °C
T storage (max.)	50 °C
T storage (min.)	-40 °C
T-case lifetime (nom.)	75 °C
T-Case maximum (max.)	75 °C

### Mechanical and Housing

Housing	L360x30x22
---------	------------

### Emergency Operation

Nominal light output after 60 seconds	100% of EBLF
Normal operating voltage (DC)	220-240 V
Battery voltage guaranteed operation	176-275 V

Battery voltage guaranteed ignition	186-275 V
Emergency ballast lumen factor (EBLF) (nom.)	100 %
Nominal light output after 5 seconds	50% of EBLF

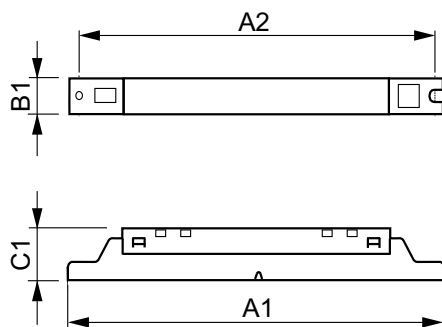
### Approval and Application

Energy efficiency index	A2 BAT
IP classification	IP 20 [ Ingress Protection 20]
EMI 9 kHz ... 30 MHz	EN55015
Vibration standard	IEC68-2-6 F c
Bumps standard	IEC 68-2-29 Eb
Approval marks	CE marking ENEC certificate CCC certificate C-Tick certificate TISI marking SIRIM approval CCC certificate
Humming and noise level	30 dB(A)

### Product Data

Full product code	871829175842600
Order product name	HF-S 114-35 TL5 HE II 220-240V
EAN/UPC – product	8718291758426
Order code	75842600
SAP numerator – quantity per pack	1
Numerator – packs per outer box	12
SAP material	913713042066
SAP net weight (piece)	0.260 kg

## Dimensional drawing



HF-S 114-35 TL5 HE II 220-240V

Product	D1	C1	A1	A2	B1
HF-S 114-35 TL5 HE II 220-240V	4.2 mm	22.0 mm	360.0 mm	350.0 mm	30.0 mm

## HF-Selectalume II for TL5 lamps

