



MASTERColour CDM-TC



MASTERColour CDM-TC 70W/830 G8.5 1CT/12

Range of single-ended, very compact, high-efficiency, discharge lamps with a stable color over lifetime and a crisp, sparkling light

Warnings and Safety

- Use only in totally enclosed luminaire, even during testing (IEC61167, IEC 62035, IEC60598)
- The luminaire must be able to contain hot lamp parts if the lamp ruptures
- Control gear must include end-of-life protection (IEC61167, IEC 62035)
- Use only with electronic control gear. 35W/830 lamps may also use electromagnetic gear.
- A lamp breaking is extremely unlikely to have any impact on your health. If a lamp breaks, ventilate the room for 30 minutes and remove the parts, preferably with gloves. Put them in a sealed plastic bag and take it to your local waste facilities for recycling. Do not use a vacuum cleaner.

Product data

General Information		Colour designation	
Cap base	G8.5 [G8.5]	Colour designation	Warm White (WW)
Operating position	UNIVERSAL [Any or Universal (U)]	Lumen maintenance 10,000 hours (nom.)	65 %
Life to 5% failures (nom.)	9000 h	Lumen maintenance 2,000 hours (min.)	75 %
Life to 10% failures (nom.)	8000 h	Lumen maintenance 2,000 hours (nom.)	85 %
Life to 20% failures (nom.)	9000 h	Lumen maintenance 5,000 hours (min.)	65 %
Life to 50% failures (nom.)	12000 h	Lumen maintenance 5,000 hours (nom.)	75 %
ANSI code HID	C139/E	Chromaticity coordinate X (nom.)	0.434
	Sphere	Chromaticity coordinate Y (nom.)	0.398
		Correlated Colour Temperature (Nom)	3000 K
		Luminous efficacy (rated) (nom.)	86 lm/W
		Colour rendering index (nom.)	83
Light Technical		Operating and Electrical	
Colour Code	830 [CCT of 3,000 K]	Power (Rated) (Nom)	73.2 W
Luminous flux (nom.)	6300 lm		
Luminous flux (rated) (nom.)	6300 lm		

MASTERColour CDM-TC

Lamp current run-up (max.)	1.4 A
Ignition supply voltage (max.)	198 V
Ignition peak voltage (max.)	5000 V
Ignition supply voltage (min.)	198 V
Ignition peak voltage (min.)	3500 V
Re-ignition time (min.) (max.)	15 min
Ignition time (max.)	30 s
Voltage (Max)	87 V
Voltage (Min)	78 V
Voltage (Nom)	83 V

Controls and Dimming

Dimmable	No
Run-up time 90% (max.)	3 min

Mechanical and Housing

Lamp Finish	Clear
Bulb material	UV-Block Quartz
Bulb shape	T14 [T 14 mm]

Approval and Application

Energy Efficiency Class	G
Mercury (Hg) content (max.)	4.6 mg
Mercury (Hg) content (nom.)	4.6 mg

Energy consumption kWh/1,000 hours	74 kWh
	473344

UV

PET (NIOSH) (min.)	8 h/500lx
Damage factor D/fc (max.)	0.3

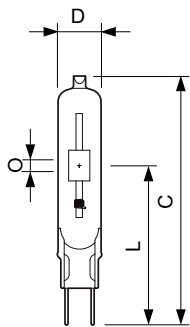
Luminaire Design Requirements

Bulb temperature (max.)	550 °C
Pinch temperature (max.)	300 °C

Product Data

Full product code	871150020167615
Order product name	MASTERColour CDM-TC 70W/830 G8.5 1CT/12
EAN/UPC – product	8711500201676
Order code	20167615
SAP numerator – quantity per pack	1
Numerator – packs per outer box	12
SAP material	928086505131
SAP net weight (piece)	0.010 kg
ILCOS code	MT/UB-70/830-H-G8.5-17/85

Dimensional drawing

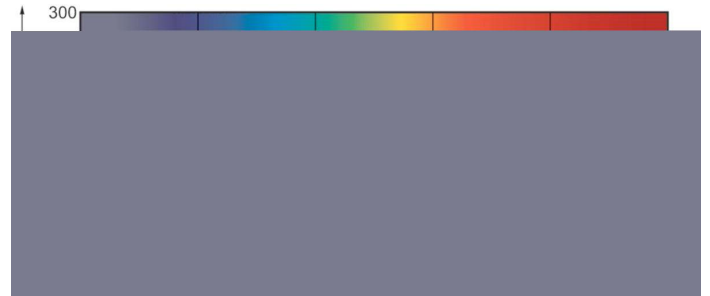
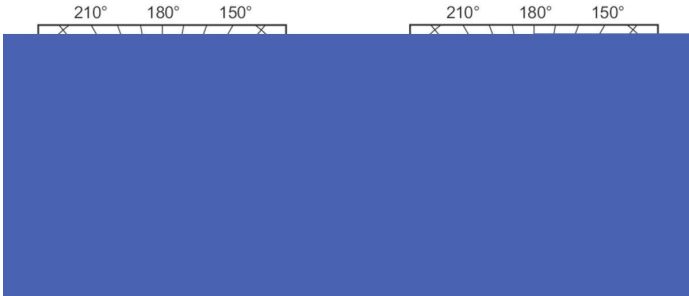


CDM-TC 70W/830 G8.5

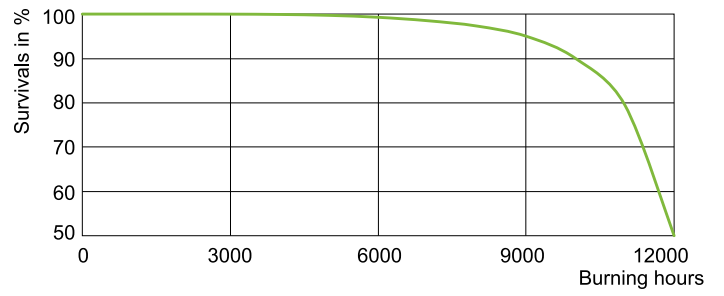
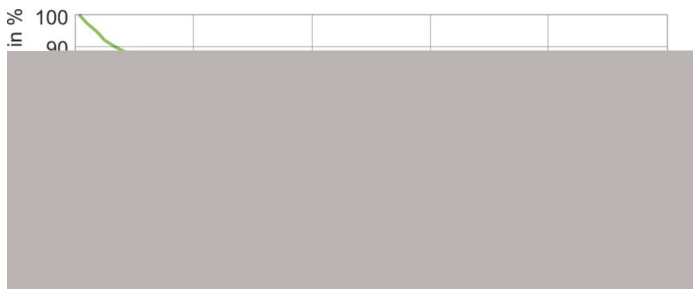
Product	D (max)	D	O	L (min)	L (max)	L	C (max)
MASTERColour CDM-TC 70W/830 G8.5 1CT/12	15 mm	0.5 in	7 mm	51 mm	53 mm	52 mm	85 mm

MASTERCoulour CDM-TC

Photometric data



Lifetime



LDLE_CDM-TC_0001-Life expectancy diagram

