



Essential LEDtube

LEDtube 600mm 8W 765 T8 AP I G

Essential LEDtube is an affordable LED tube that is suitable for replacing T8 fluorescent lamps. The product provides a natural lighting effect for use in general lighting applications, as well as instant energy savings – an environmentally friendly solution.

Product data

| General information | | Voltage (Nom) | |
|--|----------------------------------|------------------------------------|---------------------------------------|
| Cap base | G13 [Medium Bi-Pin Fluorescent] | 220–240 V | |
| EU RoHS compliant | Yes | Temperature | |
| Nominal lifetime (nom.) | 15000 h | T-ambient (max.) | 45 °C |
| Switching cycle | 50000 | T-ambient (min.) | -20 °C |
| Light technical | | T storage (max.) | 65 °C |
| Colour Code | 765 [CCT of 6,500 K] | T storage (min.) | -40 °C |
| Beam Angle (Nom) | 240 ° | T-Case maximum (nom.) | 60 °C |
| Luminous flux (nom.) | 800 lm | Controls and dimming | |
| Colour designation | Cool Daylight | Dimmable | No |
| Correlated Colour Temperature (Nom) | 6500 K | Mechanical and housing | |
| Luminous efficacy (rated) (nom.) | 100.00 lm/W | 23-5/8 in | |
| Colour consistency | <7 | Bulb shape | Tube, double-ended |
| Colour rendering index (nom.) | 73 | Approval and application | |
| LLMF at end of nominal lifetime (nom.) | 70 % | Energy-saving product | Yes |
| Operating and electrical | | Suitable for accent lighting | No |
| Input frequency | 50 to 60 Hz | Approval marks | RoHS compliance KEMA Keur certificate |
| Power (Rated) (Nom) | 8 W | Energy consumption kWh/1,000 hours | 8 kWh |
| Starting time (nom.) | 0.5 s | | |
| Warm-up time to 60% light (nom.) | 0.5 s | | |
| Power factor (nom.) | 0.5 | | |

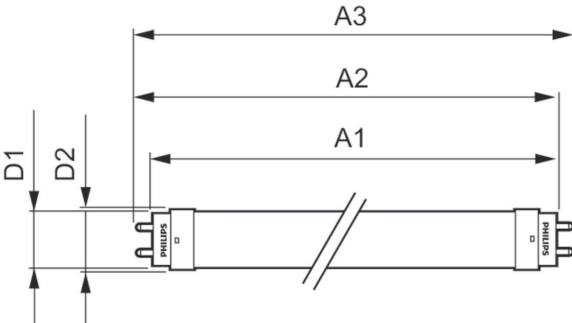
Essential LEDtube

Product data

| | |
|-----------------------------------|--------------------------------|
| Full product code | 871869664605200 |
| Order product name | LEDtube 600mm 8W 765 T8 AP I G |
| EAN/UPC – product | 8718696646052 |
| Order code | 64605200 |
| SAP numerator – quantity per pack | 1 |

| | |
|---------------------------------|--------------|
| Numerator – packs per outer box | 20 |
| SAP material | 929001184838 |
| Net Weight (Piece) | 0.091 kg |

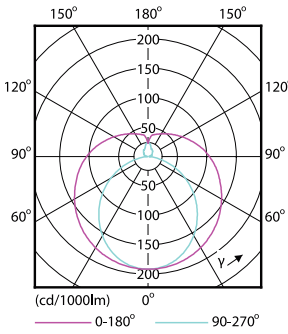
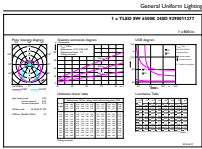
Dimensional drawing



LEDtube 600mm 8W 765 T8 AP I G

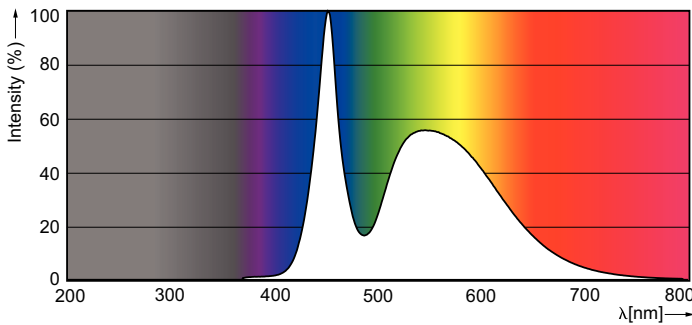
| Product | D1 | D2 | A1 | A2 | A3 | C | D |
|------------------|-------|----|-------|-------|-------|-------|------|
| LEDtube 600mm | 25.68 | 28 | 588.5 | 595.5 | 602.5 | 602.5 | 27.8 |
| 8W 765 T8 AP I G | mm | mm | mm | mm | mm | mm | mm |

Photometric data



LEDtube 600mm 8W 765 T8 CN I G

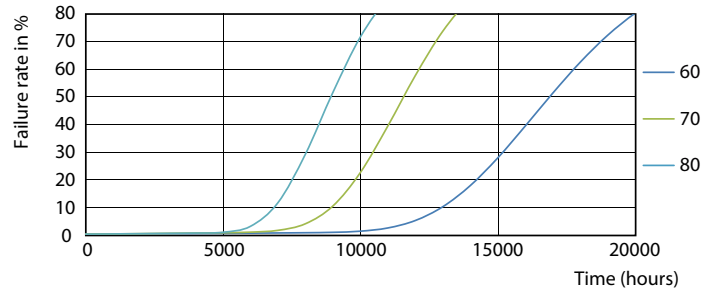
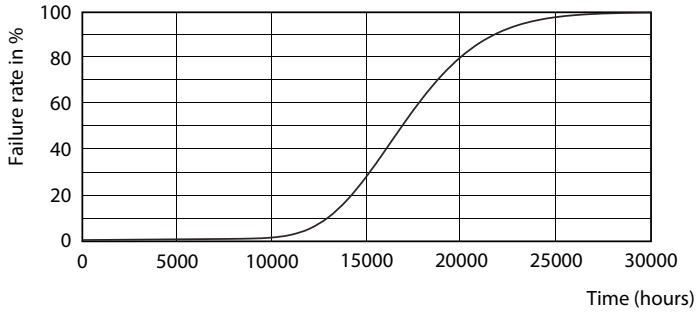
LEDtube 1200mm 16W 765 T8 CN I G



LEDtube 600mm 8W G13 T8 765 800lm AP C G

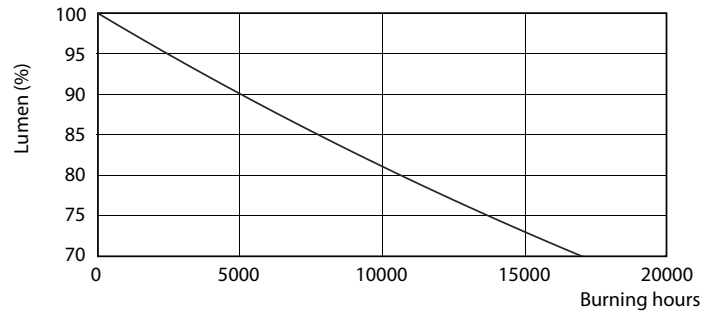
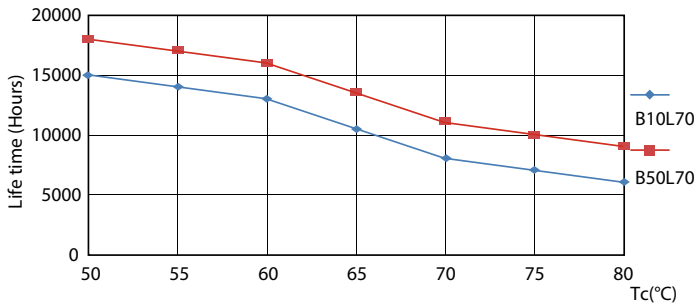
Essential LEDtube

Lifetime



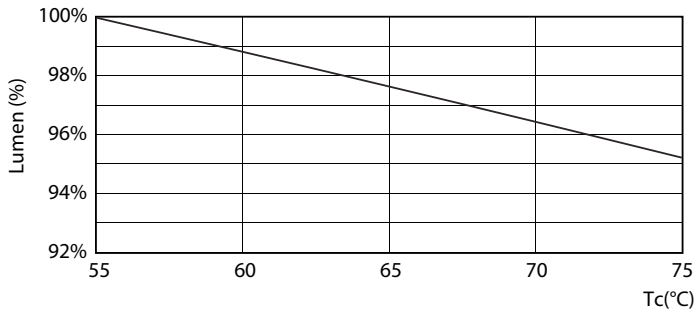
LEDtube 16W G13 740 T8 AP I G

LEDtube 16W G13 740 T8 AP I G



LEDtube 16W G13 740 T8 AP I G

LEDtube 16W G13 740 T8 AP I G



LEDtube 16W G13 740 T8 AP I G

Essential LEDtube

