



MASTER LEDtube InstantFit HF T5

Master LEDtube HF 1200mm HE 16.5W 840 T5

The Philips MASTER LEDtube integrates an LED light source into a traditional fluorescent form factor. Its unique design creates a perfectly uniform visual appearance, which cannot be distinguished from traditional fluorescents. These T5 lighting tubes are the right choice for absolute performance and are designed to stand up to everyday conditions. Unparalleled savings, thanks to low energy consumption and an exceptionally long lifetime, make these T5 LED tubes the choice for every demanding applications.

Product data

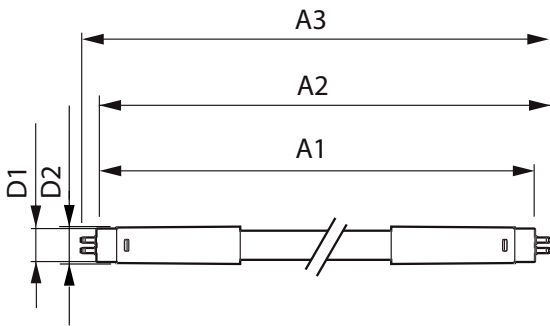
General information		LLMF at end of nominal lifetime (nom.) 70 %	
Cap base	G5 [G5]		
CE mark	Yes		
EU RoHS compliant	Yes		
Nominal lifetime (nom.)	60000 h		
Switching cycle	50000		
	Sphere		
Tier	MASTER		
Light technical		Operating and electrical	
Colour Code	841 [CCT of 4100K (841)]	Input frequency	30 K to 100 K Hz
Beam Angle (Nom)	200 °	Power (Rated) (Nom)	16.5 W
Luminous flux (nom.)	2500 lm	Lamp current (max.)	350 mA
Colour designation	Cool White (CW)	Lamp current (min.)	150 mA
Correlated Colour Temperature (Nom)	4000 K	Starting time (nom.)	0.5 s
Luminous efficacy (rated) (nom.)	151 lm/W	Warm-up time to 60% light (nom.)	0.5 s
Colour consistency	<6	Power factor (nom.)	0.92
Colour rendering index (nom.)	80	Voltage (Nom)	70-120 V
		Temperature	
		T-ambient (max.)	45 °C
		T-ambient (min.)	-20 °C
		T storage (max.)	65 °C
		T storage (min.)	-40 °C

MASTER LEDtube InstantFit HF T5

T-Case maximum (nom.)	65 °C
Controls and dimming	
Dimmable	Yes – Check ballast compatibility
Mechanical and housing	
Lamp Finish	Frosted
Bulb material	Glass
Product length	1200 mm
Bulb shape	Tube, double-ended
Approval and application	
Energy Efficiency Class	D
Energy-saving product	Yes
Approval marks	RoHS compliance TUV CE marking KEMA Keur certificate

Energy consumption kWh/1,000 hours	17 kWh
	406187
Product data	
Full product code	871869674331700
Order product name	Master LEDtube HF 1200mm HE 16.5W 840 T5
EAN/UPC – product	8718696743317
Order code	74331700
SAP numerator – quantity per pack	1
Numerator – packs per outer box	10
SAP material	929001391102
Net Weight (Piece)	0.160 kg

Dimensional drawing



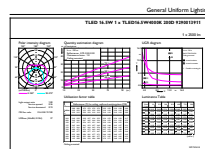
Master LEDtube HF 1200mm HE 16.5W 840 T5

Product	D1	D2	A1	A2	A3
Master LEDtube HF 1200mm HE 16.5W 840 T5	15.5 mm	18.8 mm	1149 mm	1156.1 mm	1163.2 mm

Photometric data



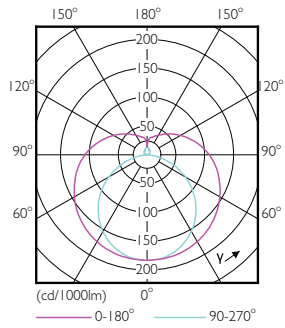
LEDtube 13W G13 2100lm



LEDtube 1200mm 16-5W G5 840 2500lm

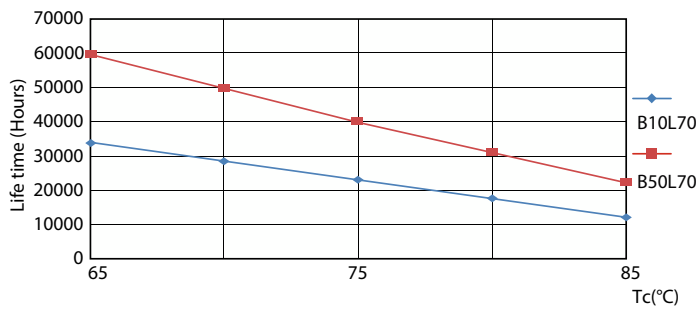
MASTER LEDtube InstantFit HF T5

Photometric data

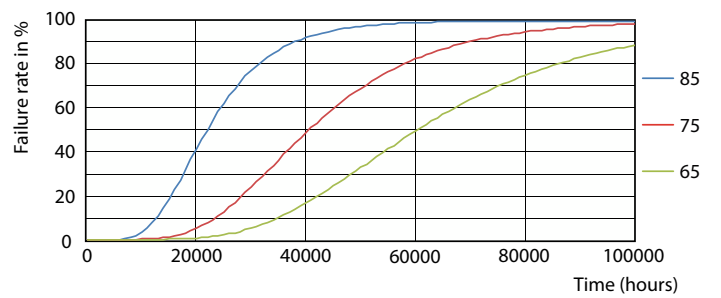


LEDtube 600mm 8W G5 830 1000lm

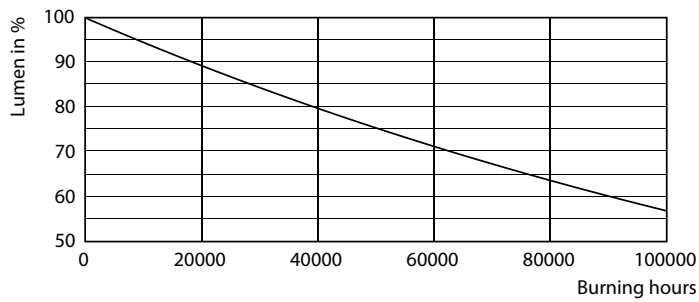
Lifetime



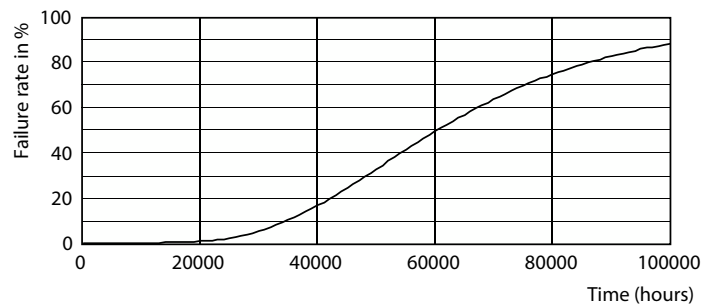
LifetimeVsTc



FailureRate



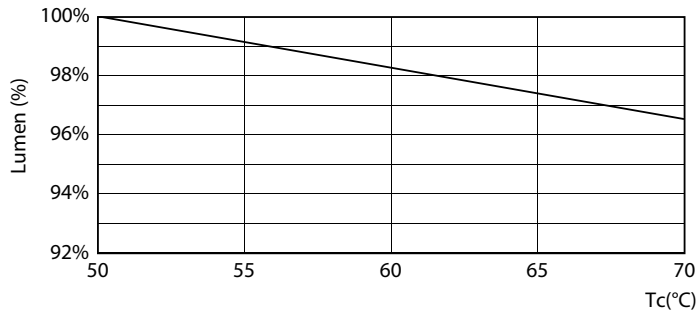
Lumen Maintenance Diagram



Life Expectancy Diagram

MASTER LEDtube InstantFit HF T5

Lifetime



LEDtube MAS SLR 16,5W 60K LumenVsTc-LMP

