



# MASTER LEDtube InstantFit HF T5



## Master LEDtube HF 1500mm HE 20W 840 T5

Philips MASTER LEDtube InstantFit T5 integrates a LED light source into a traditional fluorescent form factor. Its unique design creates a perfectly uniform visual appearance which cannot be distinguished from traditional fluorescents. The Philips MASTER LEDtube InstantFit T5 is the ideal solution for customers who have higher light output requirements and want to maximise value over the lifetime. The full energy savings & longer lifetime result in attractive payback times and TCO benefits.

### Product data

General Information	
Cap base	G5 [ G5]
EU RoHS compliant	Yes
Nominal lifetime (nom.)	60000 h
Switching cycle	50,000X
	Sphere

Light Technical	
Colour Code	841 [ CCT of 4100K (841)]
Beam Angle (Nom)	200 °
Luminous flux (nom.)	3000 lm
Colour designation	Cool White (CW)
Correlated Colour Temperature (Nom)	4000 K
Luminous efficacy (rated) (nom.)	150.00 lm/W
Colour consistency	<6
Colour rendering index (nom.)	80
LLMF at end of nominal lifetime (nom.)	70 %

Operating and Electrical	
Input frequency	30K to 100K Hz
Power (Rated) (Nom)	20 W
Lamp current (max.)	350 mA
Lamp current (min.)	150 mA
Starting time (nom.)	0.5 s
Warm-up time to 60% light (nom.)	0.5 s
Power factor (nom.)	0.92
Voltage (Nom)	80-130 V

Temperature	
T-ambient (max.)	45 °C
T-ambient (min.)	-20 °C
T storage (max.)	65 °C
T storage (min.)	-40 °C
T-Case maximum (nom.)	65 °C

# MASTER LEDtube InstantFit HF T5

## Controls and Dimming

Dimmable	Yes – Check ballast compatibility
----------	-----------------------------------

## Mechanical and Housing

Lamp Finish	Frosted
Bulb material	Glass
Product length	1500 mm
Bulb shape	Tube, double-ended

## Approval and Application

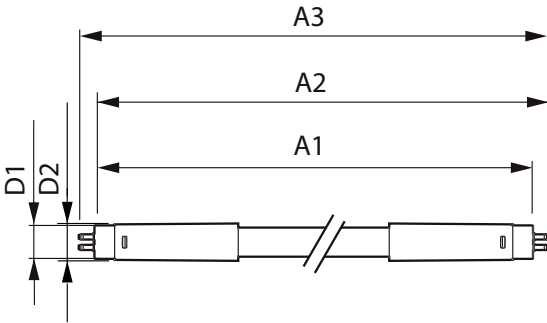
Energy Efficiency Class	D
Energy-saving product	Yes
Approval marks	RoHS compliance TUV CE marking KEMA Keur certificate

Energy consumption kWh/1,000 hours	20 kWh
	406190

## Product Data

Full product code	871869674337900
Order product name	Master LEDtube HF 1500mm HE 20W 840 T5
EAN/UPC – product	8718696743379
Order code	74337900
SAP numerator – quantity per pack	1
Numerator – packs per outer box	10
SAP material	929001391402
SAP net weight (piece)	0.196 kg

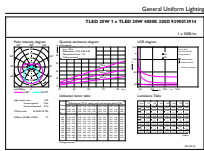
## Dimensional drawing



TLED 1500mm 230V17W-35W 2600lm 160D 400

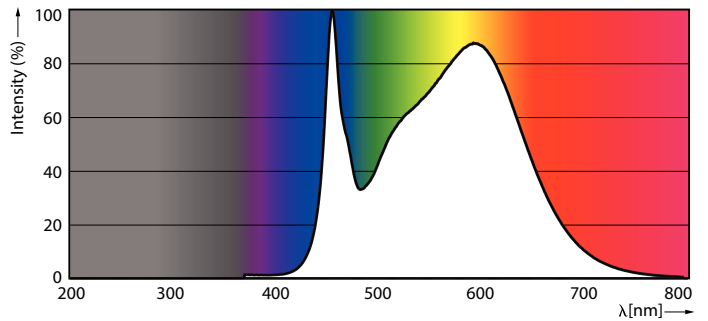
Product	D1	D2	A1	A2	A3
Master LEDtube HF 1500mm HE 20W 840 T5	15.5 mm	18.8 mm	1449 mm	1456.1 mm	1463.2 mm

## Photometric data



General Uniform Lighting  
TLED 20W T5, TLED 35W 40W 45W 50W 55W 60W  
Page 11

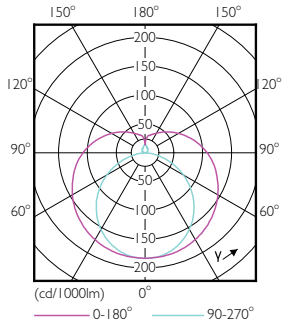
LEDtube 1500mm 20W G5 840 3000lm



LEDtube 1500mm 20W G5 840 3000lm

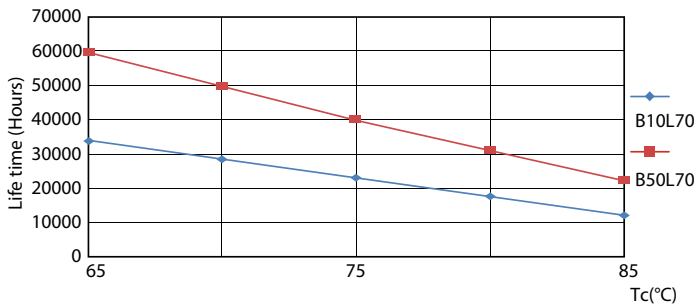
# MASTER LEDtube InstantFit HF T5

## Photometric data

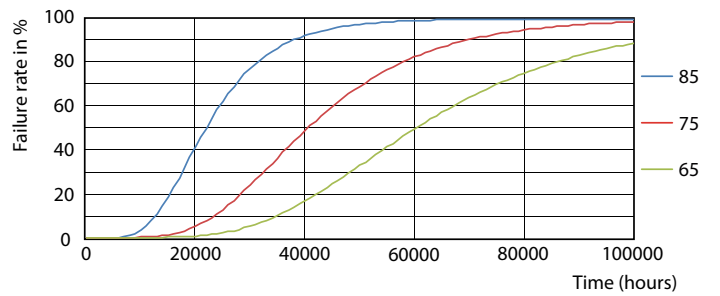


LEDtube 600mm 8W G5 830 1000lm

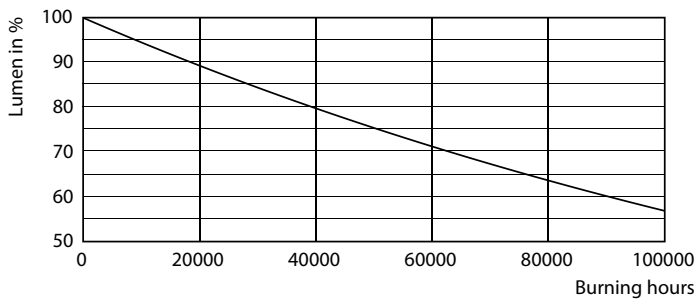
## Lifetime



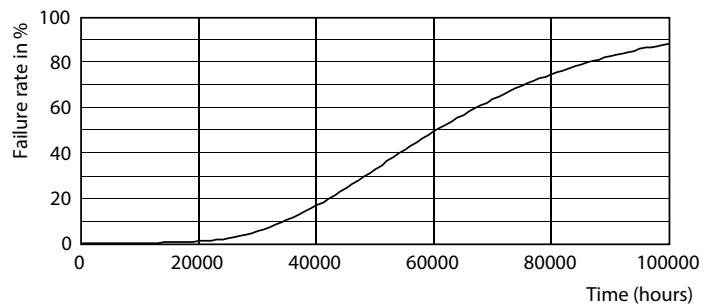
LEDtube MAS SLR 8W 60K LifetimeVsTc-LED



LEDtube MAS SLR 8W 60K FailureRate-LED



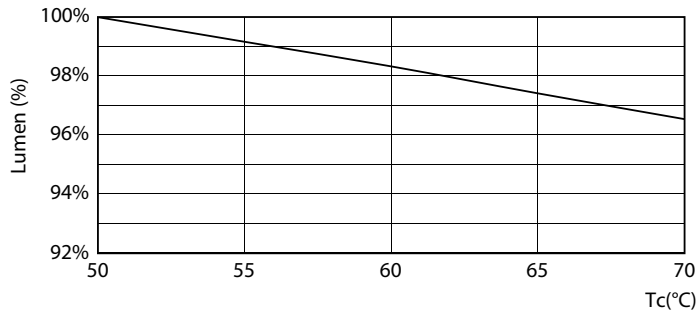
LEDtube\_60K



LEDtube\_60K

# MASTER LEDtube InstantFit HF T5

## Lifetime



LEDtube MAS SLR 20W 60K LumenVsTc-LMP

