



MASTER LEDtube InstantFit HF T5



Master LEDtube HF 1500mm HE 20W 865 T5

Philips MASTER LEDtube InstantFit T5 integrates a LED light source into a traditional fluorescent form factor. Its unique design creates a perfectly uniform visual appearance which cannot be distinguished from traditional fluorescents. The Philips MASTER LEDtube InstantFit T5 is the ideal solution for customers who have higher light output requirements and want to maximise value over the lifetime. The full energy savings & longer lifetime result in attractive payback times and TCO benefits.

Product data

| General Information | |
|-------------------------|----------|
| Cap base | G5 [G5] |
| EU RoHS compliant | Yes |
| Nominal lifetime (nom.) | 60000 h |
| Switching cycle | 50,000X |
| | Sphere |

| Light Technical | |
|--|-----------------------|
| Colour Code | 865 [CCT of 6,500 K] |
| Beam Angle (Nom) | 200 ° |
| Luminous flux (nom.) | 3000 lm |
| Colour designation | Cool Daylight |
| Correlated Colour Temperature (Nom) | 6500 K |
| Luminous efficacy (rated) (nom.) | 150.00 lm/W |
| Colour consistency | <6 |
| Colour rendering index (nom.) | 80 |
| LLMF at end of nominal lifetime (nom.) | 70 % |

| Operating and Electrical | |
|----------------------------------|----------------|
| Input frequency | 30K to 100K Hz |
| Power (Rated) (Nom) | 20 W |
| Lamp current (max.) | 350 mA |
| Lamp current (min.) | 150 mA |
| Starting time (nom.) | 0.5 s |
| Warm-up time to 60% light (nom.) | 0.5 s |
| Power factor (nom.) | 0.92 |
| Voltage (Nom) | 80-130 V |

| Temperature | |
|-----------------------|--------|
| T-ambient (max.) | 45 °C |
| T-ambient (min.) | -20 °C |
| T storage (max.) | 65 °C |
| T storage (min.) | -40 °C |
| T-Case maximum (nom.) | 65 °C |

MASTER LEDtube InstantFit HF T5

Controls and Dimming

| | |
|----------|----------------------------|
| Dimmable | Only with specific dimmers |
|----------|----------------------------|

Mechanical and Housing

| | |
|----------------|--------------------|
| Lamp Finish | Frosted |
| Bulb material | Glass |
| Product length | 1500 mm |
| Bulb shape | Tube, double-ended |

Approval and Application

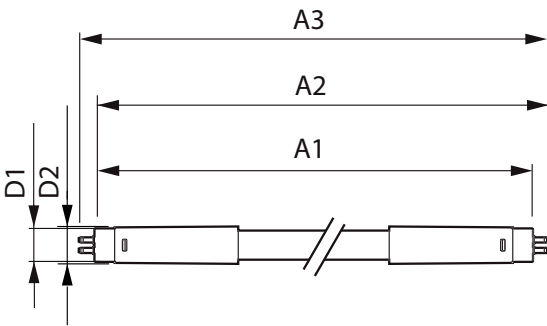
| | |
|-------------------------|--|
| Energy Efficiency Class | D |
| Energy-saving product | Yes |
| Approval marks | RoHS compliance CE marking KEMA Keur certificate |

| | |
|------------------------------------|--------|
| Energy consumption kWh/1,000 hours | 20 kWh |
| | 406191 |

Product Data

| | |
|-----------------------------------|--|
| Full product code | 871869674339300 |
| Order product name | Master LEDtube HF 1500mm HE 20W 865 T5 |
| EAN/UPC – product | 8718696743393 |
| Order code | 74339300 |
| SAP numerator – quantity per pack | 1 |
| Numerator – packs per outer box | 10 |
| SAP material | 929001391502 |
| SAP net weight (piece) | 0.200 kg |

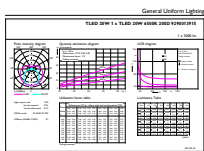
Dimensional drawing



TLED 1500mm 230V17W-35W 2600lm 160D 650

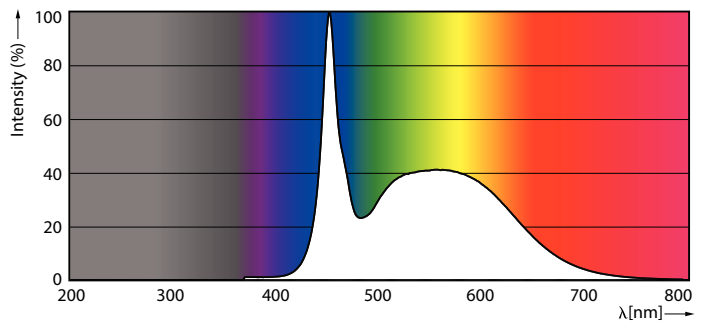
| Product | D1 | D2 | A1 | A2 | A3 |
|--|---------|---------|---------|-----------|-----------|
| Master LEDtube HF 1500mm HE 20W 865 T5 | 15.5 mm | 18.8 mm | 1449 mm | 1456.1 mm | 1463.2 mm |

Photometric data



General Uniform Lighting
TLED 20W T5, TLED 35W 40W 45W 50W 60W 70W 80W
1500 mm
Page 11

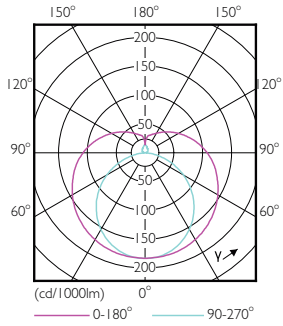
LEDtube 1500mm 20W G5 865 3000lm



LEDtube 1500mm 20W G5 865 3000lm

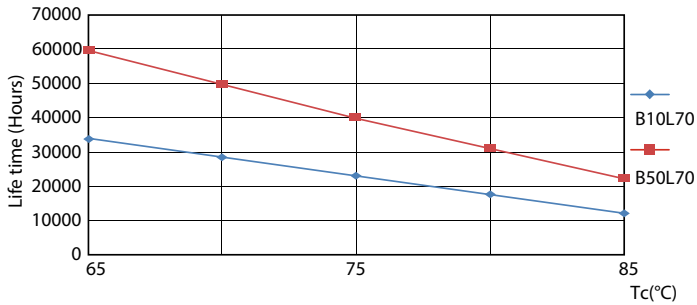
MASTER LEDtube InstantFit HF T5

Photometric data

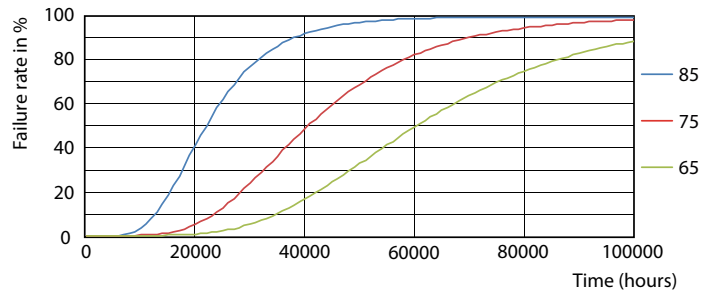


LEDtube 600mm 8W G5 830 1000lm

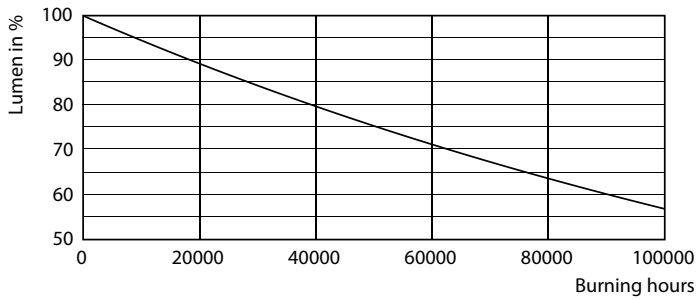
Lifetime



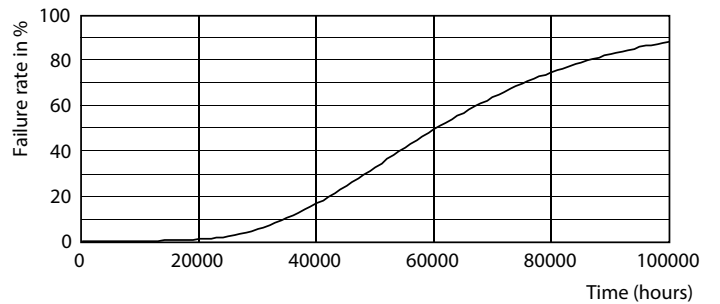
LEDtube MAS SLR 8W 60K LifetimeVsTc-LED



LEDtube MAS SLR 8W 60K FailureRate-LED



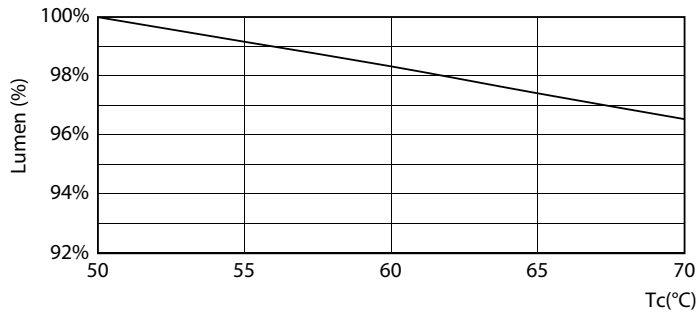
LEDtube_60K



LEDtube_60K

MASTER LEDtube InstantFit HF T5

Lifetime



LEDtube MAS SLR 20W 60K LumenVsTc-LMP

