



CorePro LEDtube EM/ Mains



CorePro LEDtube 1200mm HO 18W 840 T8

The CorePro LEDtube is an affordable LED solution suitable for replacing T8 fluorescent lamps. The product provides a natural lighting effect for use in general lighting applications, as well as instant energy savings – an environmentally friendly solution.

Warnings and Safety

• -

Product data

General Information		Operating and Electrical	
Cap base	G13 [Medium Bi-Pin Fluorescent]	Input frequency	50 to 60 Hz
EU RoHS compliant	Yes	Power (Rated) (Nom)	18 W
Nominal lifetime (nom.)	30000 h	Starting time (nom.)	0.5 s
Switching cycle	200,000X	Warm-up time to 60% light (nom.)	0.5 s
	Sphere	Power factor (nom.)	0.9
		Voltage (Nom)	220-240 V
Light Technical		Temperature	
Colour Code	841 [CCT of 4100K (841)]	T-ambient (max.)	45 °C
Beam Angle (Nom)	240 °	T-ambient (min.)	-20 °C
Luminous flux (nom.)	2000 lm	T storage (max.)	65 °C
Colour designation	Cool White (CW)	T storage (min.)	-40 °C
Correlated Colour Temperature (Nom)	4000 K	T-Case maximum (nom.)	50 °C
Luminous efficacy (rated) (nom.)	111.00 lm/W		
Colour consistency	<6	Controls and Dimming	
Colour rendering index (nom.)	80	Dimmable	No
LLMF at end of nominal lifetime (nom.)	70 %		

CorePro LEDtube EM/Mains

Mechanical and Housing

Bulb material	Glass
Product length	1200 mm
Bulb shape	Tube, double-ended

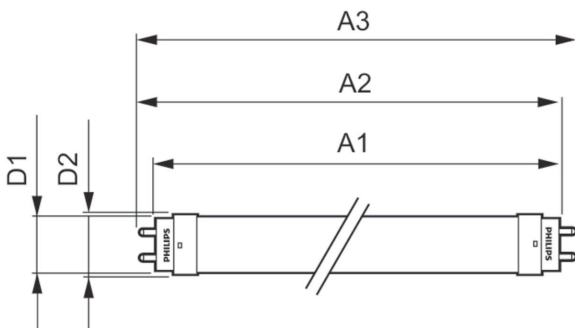
Approval and Application

Energy Efficiency Class	E
Energy-saving product	Yes
Approval marks	CE marking RoHS compliance KEMA Keur certificate
Energy consumption kWh/1,000 hours	18 kWh 491843

Product Data

Full product code	871869680613500
Order product name	CorePro LEDtube 1200mm HO 18W 840 T8
EAN/UPC – product	8718696806135
Order code	80613500
SAP numerator – quantity per pack	1
Numerator – packs per outer box	10
SAP material	929001874902
SAP net weight (piece)	0.215 kg

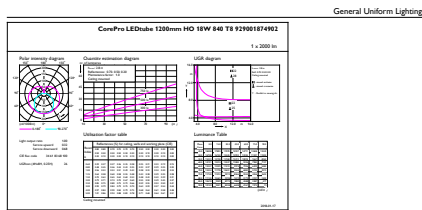
Dimensional drawing



TLED 1200mm 18W-36W 2000lm 240D 4000K

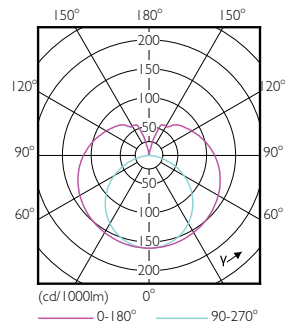
Product	D1	D2	A1	A2	A3
CorePro LEDtube 1200mm HO 18W 840 T8	25.7 mm	28 mm	1198 mm	1205 mm	1212 mm

Photometric data



CatLUX Proometrics 4.5 Philips Lighting B.V. Page 1/7

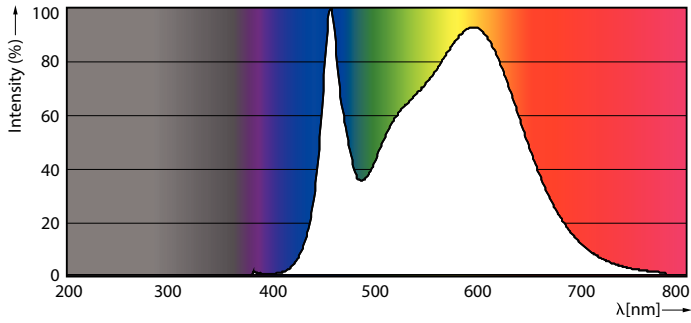
18W G13 840 4000K



18W G13 840 4000K

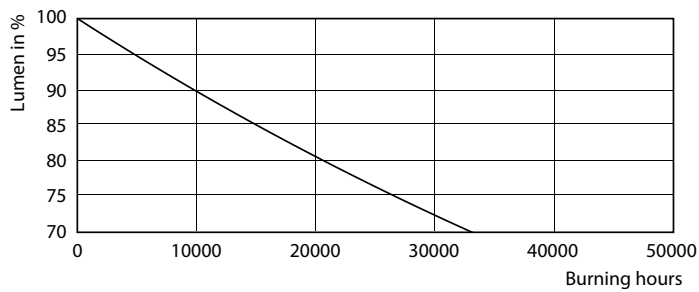
CorePro LEDtube EM/Mains

Photometric data

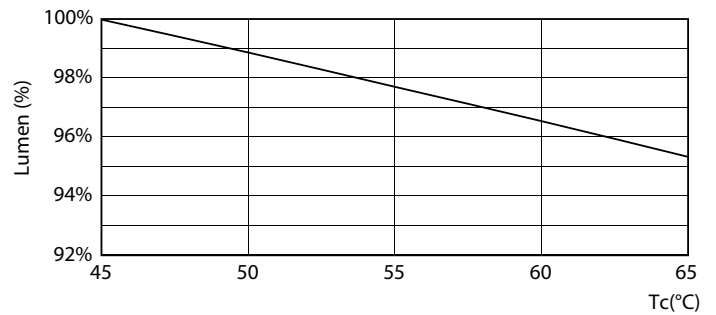


18W G13

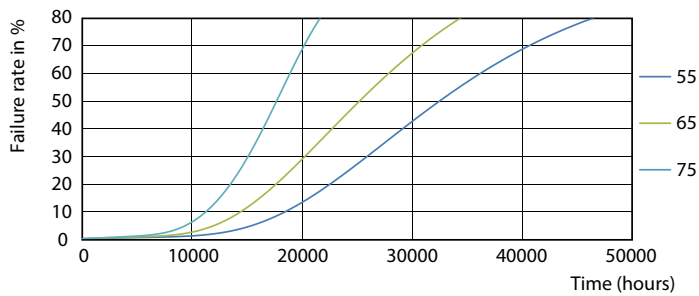
Lifetime



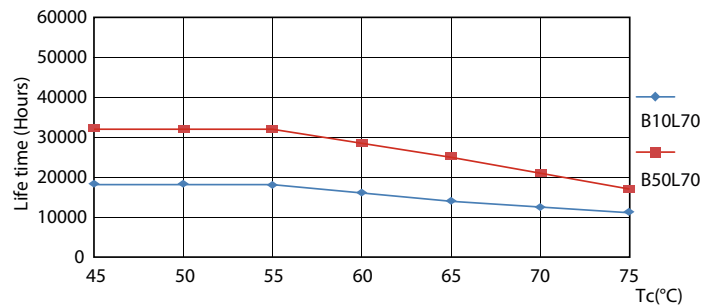
18W G13



18W G13



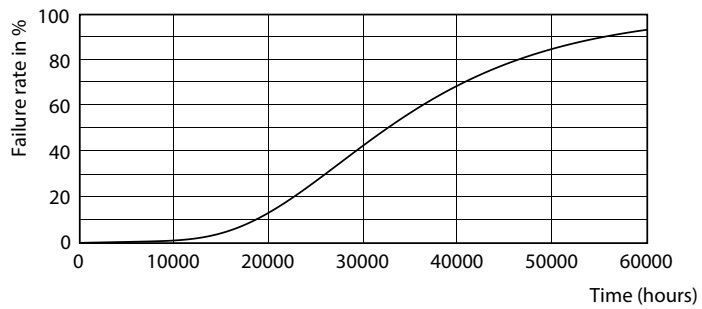
18W G13



18W G13

CorePro LEDtube EM/Mains

Lifetime



18W G13

