



Master Value LEDtube T8



MASTER LEDtube VLE 600mm HO 8W 865 T8

A high-performance LED solution, the professional Master Value LED tube is ideal for replacing T8 fluorescent lamps using EM ballast or installing directly on the mains. This product provides a uniform lighting effect for use in all general lighting, as well as instant energy-efficiency, making for an environmentally friendly solution.

Product data

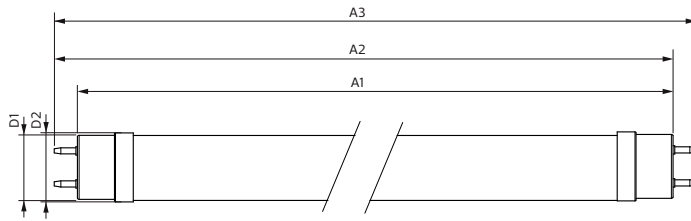
| General Information | | Power (Rated) (Nom) | |
|--|----------------------------------|----------------------------------|-----------|
| Cap base | G13 [Medium Bi-Pin Fluorescent] | | 8 W |
| EU RoHS compliant | Yes | Lamp current (max.) | 38 mA |
| Nominal lifetime (nom.) | 60000 h | Lamp current (min.) | 34 mA |
| Switching cycle | 200,000X | Starting time (nom.) | 0.5 s |
| | Sphere | Warm-up time to 60% light (nom.) | 0.5 s |
| | | Power factor (nom.) | 0.9 |
| | | Voltage (Nom) | 220-240 V |
| Light Technical | | Temperature | |
| Colour Code | 865 [CCT of 6,500 K] | T-ambient (max.) | 45 °C |
| Beam Angle (Nom) | 190 ° | T-ambient (min.) | -20 °C |
| Luminous flux (nom.) | 1050 lm | T storage (max.) | 65 °C |
| Colour designation | Cool Daylight | T storage (min.) | -40 °C |
| Correlated Colour Temperature (Nom) | 6500 K | T-Case maximum (nom.) | 55 °C |
| Luminous efficacy (rated) (nom.) | 131.00 lm/W | | |
| Colour consistency | <6 | Controls and Dimming | |
| Colour rendering index (nom.) | 80 | Dimmable | No |
| LLMF at end of nominal lifetime (nom.) | 70 % | | |
| Operating and Electrical | | Mechanical and Housing | |
| Input frequency | 50 to 60 Hz | Lamp Finish | Frosted |

Master Value LEDtube T8

| | |
|------------------------------------|--|
| Bulb material | Glass |
| Product length | 600 mm |
| Bulb shape | Tube, double-ended |
| Approval and Application | |
| Energy Efficiency Class | E |
| Energy-saving product | Yes |
| Approval marks | RoHS compliance CE marking KEMA Keur certificate |
| Energy consumption kWh/1,000 hours | 8 kWh 403611 |

| | |
|-----------------------------------|---------------------------------------|
| Product Data | |
| Full product code | 871869964683700 |
| Order product name | MASTER LEDtube VLE 600mm HO 8W 865 T8 |
| EAN/UPC – product | 8718699646837 |
| Order code | 64683700 |
| SAP numerator – quantity per pack | 1 |
| Numerator – packs per outer box | 10 |
| SAP material | 929002021302 |
| SAP net weight (piece) | 0.120 kg |

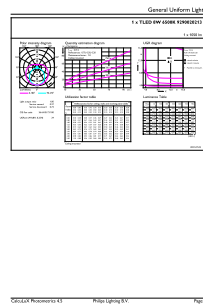
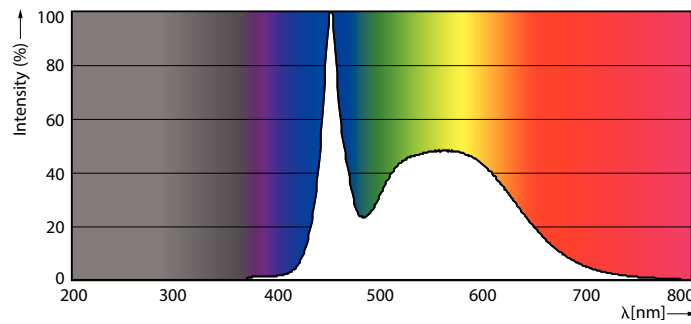
Dimensional drawing



| Product | D1 | D2 | A1 | A2 | A3 |
|--|---------|-------|----------|----------|----------|
| MASTER LEDtube VLE 600mm HO 8W 865 T8 | 25.8 mm | 28 mm | 588.5 mm | 595.5 mm | 602.5 mm |

TLED 2ft 220-240V 8-18W 1050lm 6500K G13

Photometric data

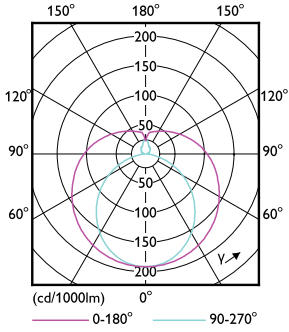


LEDtube 220-240V G13 6500k

LEDtube MAS SLR 8W G13 1050lm 865-GUL

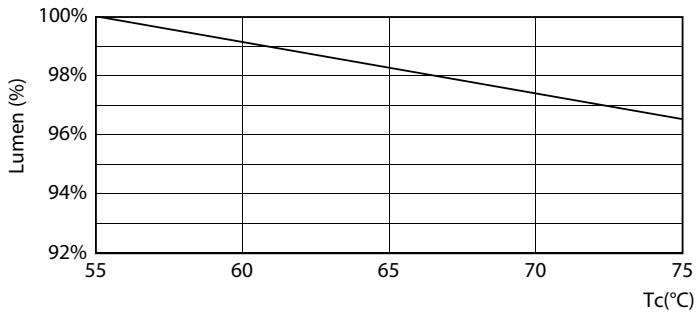
Master Value LEDtube T8

Photometric data

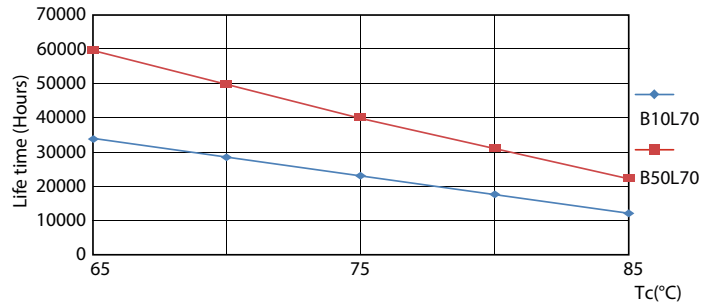


LEDtube MAS SLR 8W G13 1000lm-LDD

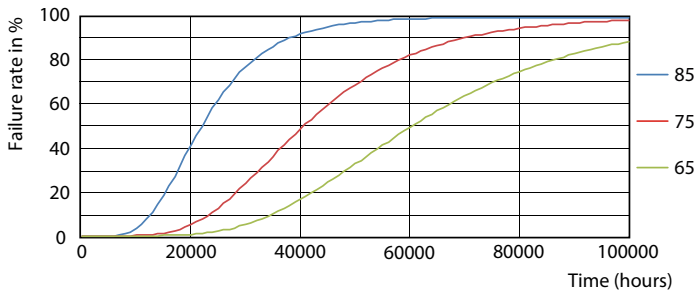
Lifetime



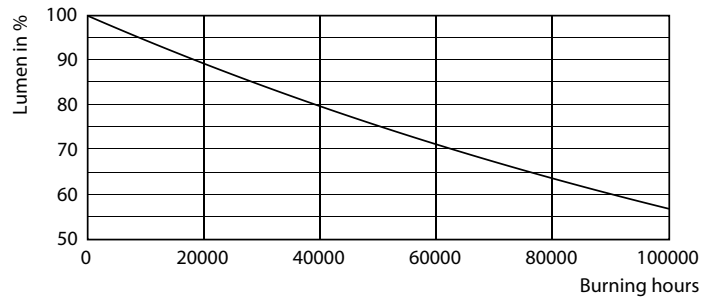
LEDtube MAS SLR 8W 60K LumenVsTc-LMP



LEDtube MAS SLR 8W 60K LifetimeVsTc-LED



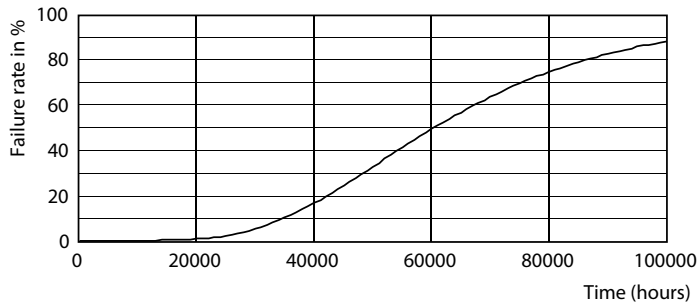
LEDtube MAS SLR 8W 60K FailureRate-LED



LEDtube_60K

Master Value LEDtube T8

Lifetime



LEDtube_60K

