

MASTER Value LEDtube T8

MASTER LEDtube VLE 1200mm HO 14W 840 T8

A high-performance LED solution, the professional MASTER Value LED tube is ideal for replacing T8 fluorescent lamps using EM ballast or installing directly on the mains. This product provides an optimal combination of value and performance – for use in all general lighting, office, industry, retail, and hospitality applications. The unique design of this LED T8 tube light offers wide compatibility, safety and fast installation, as well as instant energy savings.

Product data

| Operating and Electrical | |
|---------------------------|-------------|
| Line Frequency | 50 to 60 Hz |
| Input Frequency | 50 to 60 Hz |
| Power Consumption | 14 W |
| Starting Time (Nom) | 0.5 s |
| Warm-up time to 60% light | 0.5 s |
| Power Factor (Fraction) | 0.9 |
| Voltage (Nom) | 220-240 V |

| General Information | |
|----------------------------|---------------------------------|
| Cap-Base | G13 [Medium Bi-Pin Fluorescent] |
| Nominal lifetime | 60,000 hour(s) |
| Switching Cycle | 200,000 |
| Lighting Technology | LED |
| Flux measurement reference | Sphere |

| Light Technical | |
|------------------|--------------------|
| Color Code | 840 [CCT of 4000K] |
| Beam Angle (Nom) | 190 degree(s) |

| | |
|---------------------------------------|-----------------|
| Luminous Flux | 2,100 lumen |
| Color Designation | Cool White (CW) |
| Correlated Color Temperature (Nom) | 4000 K |
| Luminous Efficacy (rated) (Nom) | 150 lm/W |
| Color Consistency | <6 |
| Color rendering index (CRI) | 80 |
| LLMF At End Of Nominal Lifetime (Nom) | 70 % |

| Temperature | |
|---------------------------|-----------------|
| Ambient temperature range | -20 °C to 45 °C |
| T-Case Maximum (Nom) | 60 °C |

| Controls and Dimming | |
|----------------------|----|
| Dimmable | No |

| Mechanical and Housing | |
|------------------------|----------|
| Bulb Finish | Frosted |
| Bulb Material | Glass |
| Product Length | 1,200 mm |

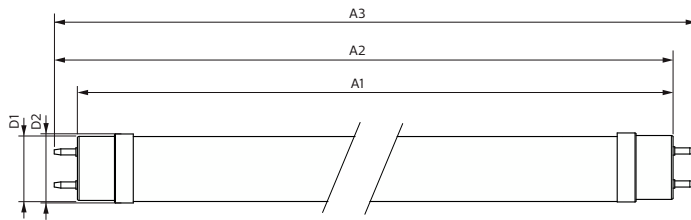
MASTER Value LEDtube T8

| | |
|---------------------------------|--|
| Bulb Shape | Tube, double-ended |
| Approval and Application | |
| Energy Saving Product | Yes |
| Approval Marks | RoHS compliance TUV CE marking KEMA Keur certificate |
| Energy Consumption kWh/1000 h | 14 kWh |
| EPREL Registration Number | 1,095.866 |
| CE mark | Yes |
| EU RoHS compliant | Yes |

| | |
|---------------------|-----------------|
| Product Data | |
| Full product code | 871869964687500 |

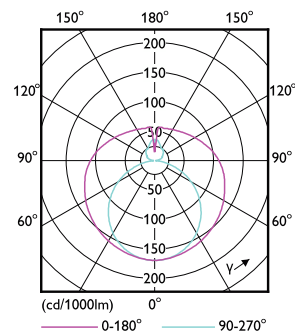
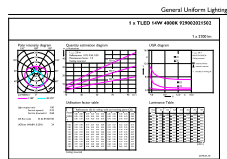
| | |
|---------------------------------|---|
| Order product name | MAS LEDtube VLE 1200mm HO 14W 840 T8 |
| Order code | 64687500 |
| Numerator - Quantity Per Pack | 1 |
| Numerator - Packs per outer box | 10 |
| Material number (12NC) | 929002021502 |
| Full product name | MASTER LEDtube VLE 1200mm HO 14W 840 T8 |
| EAN/UPC - Case | 8718699646882 |

Dimensional drawing



| Product | D1 | D2 | A1 | A2 | A3 |
|--------------------------------------|---------|-------|------------|------------|------------|
| MAS LEDtube VLE 1200mm HO 14W 840 T8 | 25.8 mm | 28 mm | 1,198.2 mm | 1,205.3 mm | 1,212.4 mm |

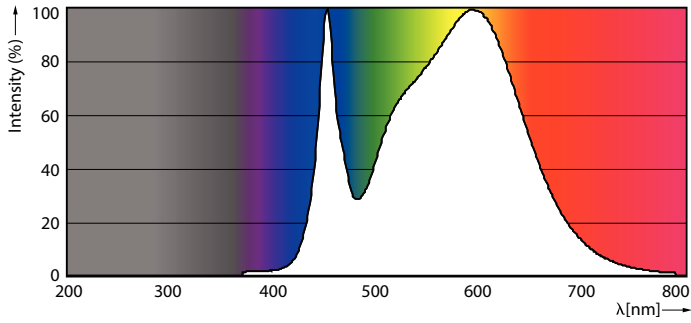
Photometric data



Light Distribution Diagram - MAS LEDtube VLE 1200mm HO 14W 840 T8

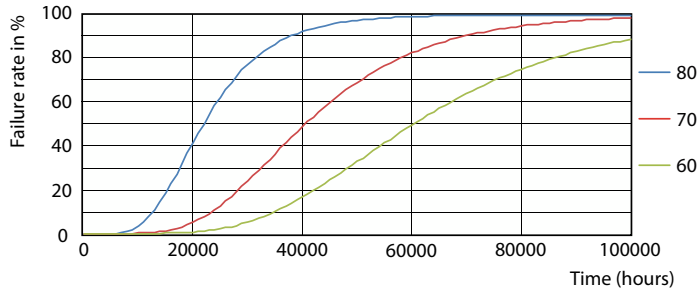
MASTER Value LEDtube T8

Photometric data

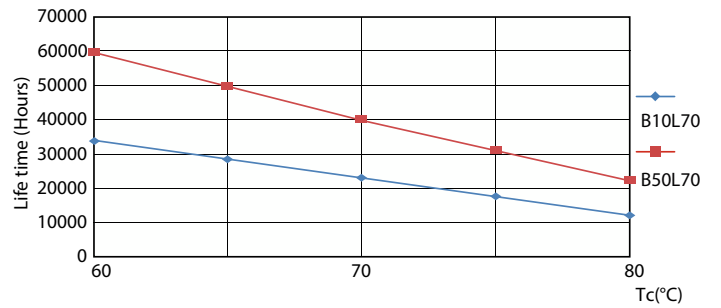


Spectral Power Distribution Colour - MAS LEDtube VLE 1200mm HO 14W 840 T8

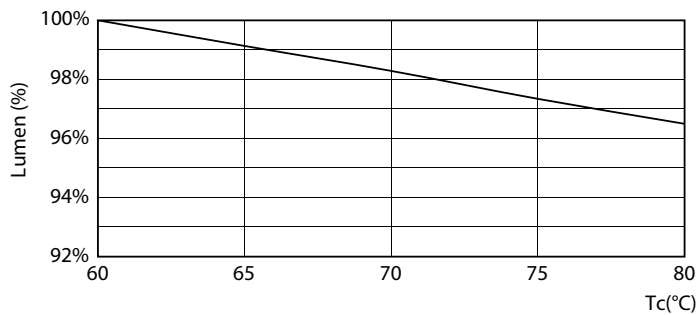
Lifetime



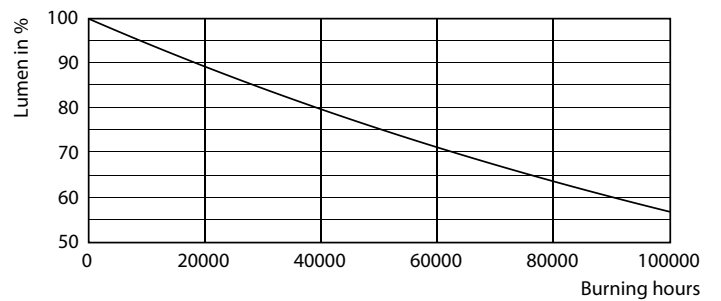
Life Expectancy Diagram - MAS LEDtube VLE 1200mm HO 14W 840 T8



Life Expectancy Diagram - MAS LEDtube VLE 1200mm HO 14W 840 T8



Lumen Maintenance Diagram - MAS LEDtube VLE 1200mm HO 14W 840 T8



Lumen Maintenance Diagram - MAS LEDtube VLE 1200mm HO 14W 840 T8

MASTER Value LEDtube T8

Lifetime



Life Expectancy Diagram - MAS LEDtube VLE 1200mm HO 14W 840 T8

