

# MASTER Value LEDtube T8

## MASTER LEDtube VLE 1500mm HO 20.5W 840 T8

A high-performance LED solution, the professional MASTER Value LED tube is ideal for replacing T8 fluorescent lamps using EM ballast or installing directly on the mains. This product provides an optimal combination of value and performance – for use in all general lighting, office, industry, retail and hospitality applications. The unique design of this LED T8 tube light offers wide compatibility, safety and fast installation, as well as instant energy savings.

### Product data

General Information	
Cap base	G13 [ Medium Bi-Pin Fluorescent]
EU RoHS compliant	Yes
Nominal lifetime (nom.)	60000 h
Switching cycle	200,000X
	Sphere
Light Technical	
Colour Code	841 [ CCT of 4100K (841)]
Beam Angle (Nom)	190 °
Luminous flux (nom.)	3100 lm
Colour designation	Cool White (CW)
Correlated Colour Temperature (Nom)	4000 K
Luminous efficacy (rated) (nom.)	151.00 lm/W
Colour consistency	<6
Colour rendering index (nom.)	80
LLMF at end of nominal lifetime (nom.)	70 %

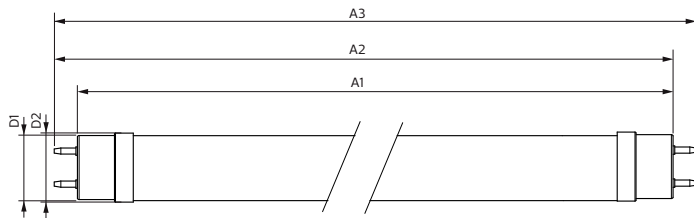
Operating and Electrical	
Input frequency	50 to 60 Hz
Power (Rated) (Nom)	20.5 W
Lamp current (max.)	97 mA
Lamp current (min.)	89 mA
Starting time (nom.)	0.5 s
Warm-up time to 60% light (nom.)	0.5 s
Power factor (nom.)	0.9
Voltage (Nom)	220-240 V
Temperature	
T-ambient (max.)	45 °C
T-ambient (min.)	-20 °C
T storage (max.)	65 °C
T storage (min.)	-40 °C
T-Case maximum (nom.)	65 °C

# MASTER Value LEDtube T8

Controls and Dimming	
Dimmable	No
Mechanical and Housing	
Lamp Finish	Frosted
Bulb material	Glass
Product length	1500 mm
Bulb shape	Tube, double-ended
Approval and Application	
Energy Efficiency Class	D
Energy-saving product	Yes
Approval marks	RoHS compliance TUV CE marking KEMA Keur certificate
Energy consumption kWh/1,000 hours	21 kWh

	1095869
Product Data	
Full product code	871869964693600
Order product name	MASTER LEDtube VLE 1500mm HO 20.5W 840 T8
EAN/UPC – product	8718699646936
Order code	64693600
SAP numerator – quantity per pack	1
Numerator – packs per outer box	10
SAP material	929002021802
SAP net weight (piece)	0.275 kg

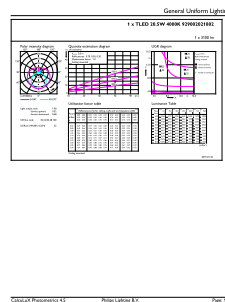
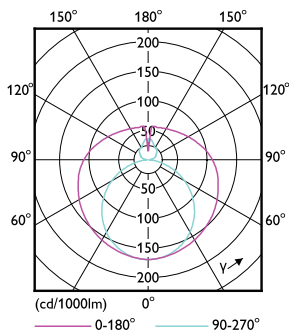
## Dimensional drawing



Product	D1	D2	A1	A2	A3
MASTER LEDtube VLE 1500mm HO 20.5W 840 T8	25.8 mm	28 mm	1498.7 mm	1505.8 mm	1512.9 mm

## MASTER LEDtube VLE 1500mm HO 20.5W 840 T8

## Photometric data

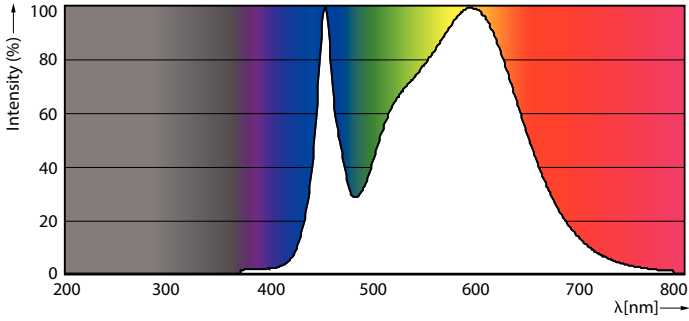


## LEDtube 220-240V G13

## LEDtube 220-240V G13 5ft 3100lm 4000k

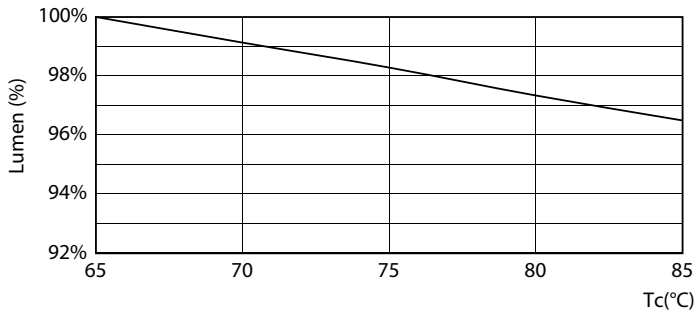
# MASTER Value LEDtube T8

## Photometric data

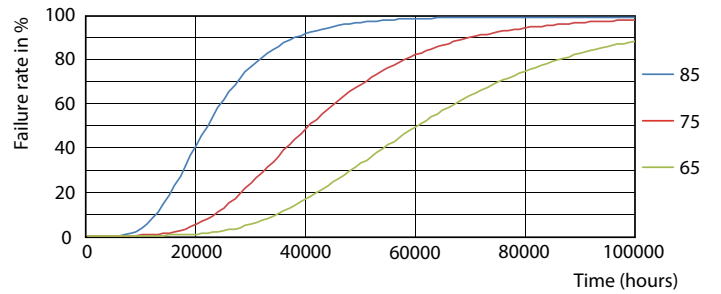


LEDtube 220-240V G13 4000k

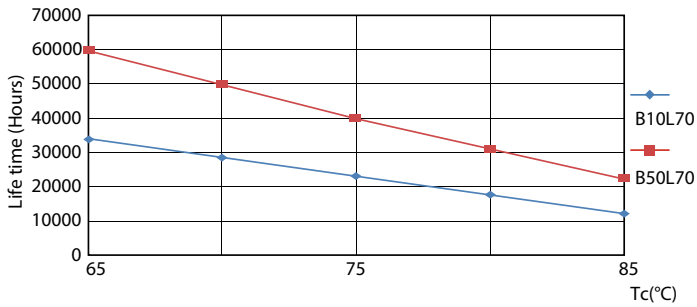
## Lifetime



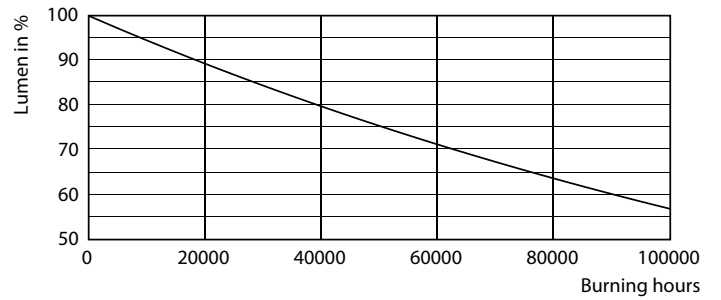
LEDtube MAS SLR 20,5W 60K LumenVsTc-LMP



LEDtube MAS SLR 20,5W 60K FailureRate-LED



LEDtube MAS SLR 20,5W 60K LifetimeVsTc-LED



LEDtube\_60K

# MASTER Value LEDtube T8

## Lifetime



LEDtube\_60K

