



Philips GreenSpace – High-efficiency, sustainable LED solution with 65% recycled materials

GreenSpace

GreenSpace is a perfect solution where customers want to strike the ideal balance between their initial investment and the cost of the installation during its lifetime while they are covering multiple applications. GreenSpace features the latest LED technology which enables extremely low power consumption. With its perfect fit you'll get the LED downlight that always fits and looks perfect at the same time. This perfect fit is available for cut out sizes from 150 to 280 mm. GreenSpace is designed for Circular Economy with optimized performance, extended lifetime through upgradability and integration options, ease of customization, recycling and disassembly. Housing and rim are made from production waste of polycarbonate sheets that are retrieved from swimming pools, car ports and illuminated advertising. And the product's long lifetime makes it a true 'fit and forget' solution.

Benefits

- Good value for money
- Low return of investment years due to high efficiency and long lifetime
- Wide range of mounting options to fit different ceiling types
- The perfect fit for retrofit projects (custom sizes) which provides faster installation
- Various light output choices to suit different application needs
- Office-compliant, with stable color performance and wide light distribution

Features

- Mini (DN460B) and compact (DN470B) sizes for recessed
- Surface mounted, track and pendant versions available
- Custom cut-out sizes between 150mm-280 mm, in total 28 sizes available
- High system efficacy: up to 131 lm/w
- UGR19 version with anti-glare ring
- Available in 3000 lumen to cover applications with higher ceilings
- Selection of colors: White, silver and black
- IP54 version with a front cover and emergency lighting option available
- Configurable with many driver types such as DALI, POE and wireless with InterAct ready
- Fast installation due to variety of connections and cables

Application

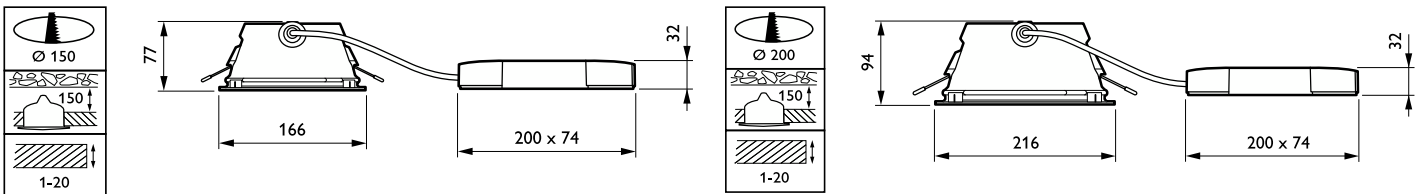
- Retail
- Offices
- Hospitals and Care Centers
- Hospitality

Versions



Greenspace EU gen 2-DN463B

Dimensional drawing



Product details

Greenspace_EU_gen_2-DN473B-DPP.TIF



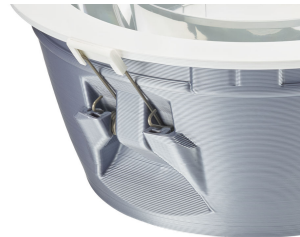
Greenspace_EU_gen_2-DN472B-DPP.TIF



Greenspace_EU_gen_2-DN462_463_472_473B-1DPP.TIF



Greenspace_EU_gen_2-DN462_463_472_473B-3DPP.TIF



Greenspace_EU_gen_2-DN462B-DPP.TIF



Greenspace_EU_gen_2-DN462_463_472_473B-2DPP.TIF



General Information

Cap-Base	-
CE mark	Yes
Driver included	Yes
Flammability mark	-
Gear	-
Light source replaceable	No
Number of gear units	1 unit

Light Technical

Beam angle of light source	- degree(s)
Color rendering index (CRI)	>80
Optic type	-

Operating and Electrical

Line Frequency	50 to 60 Hz
----------------	-------------

Mechanical and Housing

Housing Color	White
---------------	-------

Approval and Application

Protection class IEC	Safety class II
----------------------	-----------------

Initial Performance (IEC Compliant)

Luminous flux tolerance	+/-10%
-------------------------	--------

Application Conditions

Suitable for random switching	Yes
-------------------------------	-----

General Information (1/2)

Order Code	Full Product Name	ENEC mark	Glow-wire test	Lamp family code	Product family code
912500100519	DN461B LED11S/840 PSU-E C WH P	ENEC mark	Temperature 750 °C, duration 5 s	LED11S	DN461B
912500100075	DN473B LED20S/840 PSU-E C WH PCC P	ENEC mark	Temperature 750 °C, duration 5 s	LED20S	DN473B
912500100526	DN471B LED20S/830 PSU-E C WH P	ENEC mark	Temperature 750 °C, duration 5 s	LED20S	DN471B
912500100527	DN471B LED20S/840 PSU-E C WH P	ENEC mark	Temperature 750 °C, duration 5 s	LED20S	DN471B
912500101314	DN471B LED30S/830 PSU-E C WH P	-	Temperature 750 °C, duration 5 s	-	DN471B
912500101315	DN471B LED30S/840 PSU-E C WH P	-	Temperature 750 °C, duration 5 s	-	DN471B
912500101326	DN471B LED30S/830 PSU-E C ELP3 WH P	-	Temperature 750 °C, duration 5 s	-	DN471B
912500101327	DN471B LED30S/840 PSU-E C ELP3 WH P	-	Temperature 750 °C, duration 5 s	-	DN471B
910505102113	DN472B LED20S/840 DIA-VLC-E C WH PCC P	-	Temperature 750 °C, duration 5 s	-	DN472B
910505102116	DN472B LED30S/840 DIA-VLC-E C WH PCC P	-	Temperature 750 °C, duration 5 s	-	DN472B
912500100070	DN472B LED20S/830 PSU-E C WH PCC P	ENEC mark	Temperature 750 °C, duration 5 s	LED20S	DN472B
912500100071	DN472B LED20S/840 PSU-E C WH PCC P	ENEC mark	Temperature 750 °C, duration 5 s	LED20S	DN472B
912500100522	DN470B LED20S/830 PSU-E C WH P	ENEC mark	Temperature 750 °C, duration 5 s	LED20S	DN470B
912500100523	DN470B LED20S/840 PSU-E C WH P	ENEC mark	Temperature 750 °C, duration 5 s	LED20S	DN470B
912500100547	DN470B LED20S/840 PSU-E C ELP3 WH P	ENEC mark	Temperature 750 °C, duration 5 s	LED20S	DN470B
912500101307	DN470B LED30S/840 PSU-E C WH P	-	Temperature 750 °C, duration 5 s	-	DN470B
912500101322	DN470B LED30S/830 PSU-E C ELP3 WH P	-	Temperature 750 °C, duration 5 s	-	DN470B
910505102035	DN460B LED11S/840 DIA-VLC-E C WH P	-	Temperature 750 °C, duration 5 s	-	DN460B
910505102074	DN462B LED11S/840 DIA-VLC-E C WH PCC P	-	Temperature 750 °C, duration 5 s	-	DN462B
912500100062	DN462B LED11S/830 PSU-E C WH PCC P	ENEC mark	Temperature 750 °C, duration 5 s	LED11S	DN462B
912500100063	DN462B LED11S/840 PSU-E C PCC WH P	ENEC mark	Temperature 750 °C, duration 5 s	LED11S	DN462B
912500100514	DN460B LED11S/830 PSU-E C WH P	ENEC mark	Temperature 650 °C, duration 30 s	LED11S	DN460B
912500100515	DN460B LED11S/840 PSU-E C WH P	ENEC mark	Temperature 750 °C, duration 5 s	LED11S	DN460B
912500100535	DN460B LED11S/840 PSU-E C ELP3 WH P	ENEC mark	Temperature 750 °C, duration 5 s	LED11S	DN460B

Order Code	Full Product Name	ENEC		Lamp family code	Product family code
		mark	Glow-wire test		
910505102073	DN462B LED11S/830 DIA-VLC-E C WH PCO P	-	Temperature 750 °C, duration 5 s	-	DN462B
910505102075	DN462B LED11S/840 DIA-VLC-E C WH PCO P	-	Temperature 750 °C, duration 5 s	-	DN462B
912500100530	DN462B LED11S/830 PSU-E C WH PCO P	ENEC mark	Temperature 750 °C, duration 5 s	LED11S	DN462B
912500100531	DN462B LED11S/840 PSU-E C WH PCO P	ENEC mark	Temperature 750 °C, duration 5 s	LED11S	DN462B
910505102114	DN472B LED20S/840 DIA-VLC-E C WH PCO P	-	Temperature 750 °C, duration 5 s	-	DN472B
912500100542	DN472B LED20S/830 PSU-E C WH PCO P	ENEC mark	Temperature 750 °C, duration 5 s	LED20S	DN472B
912500100543	DN472B LED20S/840 PSU-E C WH PCO P	ENEC mark	Temperature 750 °C, duration 5 s	LED20S	DN472B

General Information (2/2)

Order Code	Full Product Name	Service tag	Order Code	Full Product Name	Service tag
912500100519	DN461B LED11S/840 PSU-E C WH P	Yes	912500101322	DN470B LED30S/830 PSU-E C ELP3 WH P	Yes
912500100075	DN473B LED20S/840 PSU-E C WH PCC P	Yes	910505102035	DN460B LED11S/840 DIA-VLC-E C WH P	-
912500100526	DN471B LED20S/830 PSU-E C WH P	Yes	910505102074	DN462B LED11S/840 DIA-VLC-E C WH PCC P	-
912500100527	DN471B LED20S/840 PSU-E C WH P	Yes	912500100062	DN462B LED11S/830 PSU-E C WH PCC P	Yes
912500101314	DN471B LED30S/830 PSU-E C WH P	Yes	912500100063	DN462B LED11S/840 PSU-E C PCC WH P	Yes
912500101315	DN471B LED30S/840 PSU-E C WH P	Yes	912500100514	DN460B LED11S/830 PSU-E C WH P	Yes
912500101326	DN471B LED30S/830 PSU-E C ELP3 WH P	Yes	912500100515	DN460B LED11S/840 PSU-E C WH P	Yes
912500101327	DN471B LED30S/840 PSU-E C ELP3 WH P	Yes	912500100535	DN460B LED11S/840 PSU-E C ELP3 WH P	Yes
910505102113	DN472B LED20S/840 DIA-VLC-E C WH PCC P	-	910505102073	DN462B LED11S/830 DIA-VLC-E C WH PCO P	-
910505102116	DN472B LED30S/840 DIA-VLC-E C WH PCC P	-	910505102075	DN462B LED11S/840 DIA-VLC-E C WH PCO P	-
912500100070	DN472B LED20S/830 PSU-E C WH PCC P	Yes	912500100530	DN462B LED11S/830 PSU-E C WH PCO P	Yes
912500100071	DN472B LED20S/840 PSU-E C WH PCC P	Yes	912500100531	DN462B LED11S/840 PSU-E C WH PCO P	Yes
912500100522	DN470B LED20S/830 PSU-E C WH P	Yes	910505102114	DN472B LED20S/840 DIA-VLC-E C WH PCO P	-
912500100523	DN470B LED20S/840 PSU-E C WH P	Yes	912500100542	DN472B LED20S/830 PSU-E C WH PCO P	Yes
912500100547	DN470B LED20S/840 PSU-E C ELP3 WH P	Yes	912500100543	DN472B LED20S/840 PSU-E C WH PCO P	Yes
912500101307	DN470B LED30S/840 PSU-E C WH P	Yes			

Light Technical (1/2)

Order Code	Full Product Name	Correlated Color	Luminous Efficacy	Luminous Flux	Number of light sources	Order Code	Full Product Name	Correlated Color	Luminous Efficacy	Luminous Flux	Number of light sources
		Temperature (Nom)	(rated) (Nom)					Temperature (Nom)	(rated) (Nom)		
912500100519	DN461B LED11S/840 PSU-E C WH P	4000 K	111 lm/W	1,100 lumen	1	912500100526	DN471B LED20S/830 PSU-E C WH P	3000 K	120 lm/W	2,025 lumen	1
912500100075	DN473B LED20S/840 PSU-E C WH PCC P	4000 K	119 lm/W	2,000 lumen	1	912500100527	DN471B LED20S/840 PSU-E C WH P	4000 K	125 lm/W	2,100 lumen	1

Order Code	Full Product Name	Correlated Color Temperature (Nom)	Luminous Efficacy (rated) (Nom)	Luminous Flux	Number of light sources
912500101314	DN471B LED30S/830 PSU-E C WH P	3000 K	119 lm/W	2,800 lumen	-
912500101315	DN471B LED30S/840 PSU-E C WH P	4000 K	123 lm/W	2,900 lumen	-
912500101326	DN471B LED30S/830 PSU-E C ELP3 WH P	3000 K	119 lm/W	2,800 lumen	-
912500101327	DN471B LED30S/840 PSU-E C ELP3 WH P	4000 K	123 lm/W	2,900 lumen	-
910505102113	DN472B LED20S/840 DIA-VLC-E C WH PCC P	4000 K	120 lm/W	2,025 lumen	-
910505102116	DN472B LED30S/840 DIA-VLC-E C WH PCC P	4000 K	126 lm/W	2,900 lumen	-
912500100070	DN472B LED20S/830 PSU-E C WH PCC P	3000 K	120 lm/W	2,025 lumen	1
912500100071	DN472B LED20S/840 PSU-E C WH PCC P	4000 K	125 lm/W	2,100 lumen	1
912500100522	DN470B LED20S/830 PSU-E C WH P	3000 K	126 lm/W	2,100 lumen	1
912500100523	DN470B LED20S/840 PSU-E C WH P	4000 K	131 lm/W	2,200 lumen	1
912500100547	DN470B LED20S/840 PSU-E C ELP3 WH P	4000 K	131 lm/W	2,200 lumen	1
912500101307	DN470B LED30S/840 PSU-E C WH P	4000 K	132 lm/W	3,100 lumen	-
912500101322	DN470B LED30S/830 PSU-E C ELP3 WH P	3000 K	123 lm/W	2,900 lumen	-
910505102035	DN460B LED11S/840 DIA- VLC-E C WH P	4000 K	114 lm/W	1,150 lumen	-

Order Code	Full Product Name	Correlated Color Temperature (Nom)	Luminous Efficacy (rated) (Nom)	Luminous Flux	Number of light sources
910505102074	DN462B LED11S/840 DIA- VLC-E C WH PCC P	4000 K	114 lm/W	1,150 lumen	-
912500100062	DN462B LED11S/830 PSU-E C WH PCC P	3000 K	105 lm/W	1,030 lumen	1
912500100063	DN462B LED11S/840 PSU-E C PCC WH P	4000 K	109 lm/W	1,070 lumen	1
912500100514	DN460B LED11S/830 PSU-E C WH P	3000 K	110 lm/W	1,100 lumen	1
912500100515	DN460B LED11S/840 PSU-E C WH P	4000 K	114 lm/W	1,125 lumen	1
912500100535	DN460B LED11S/840 PSU-E C ELP3 WH P	4000 K	114 lm/W	1,125 lumen	1
910505102073	DN462B LED11S/830 DIA- VLC-E C WH PCO P	3000 K	114 lm/W	1,150 lumen	-
910505102075	DN462B LED11S/840 DIA- VLC-E C WH PCO P	4000 K	114 lm/W	1,150 lumen	-
912500100530	DN462B LED11S/830 PSU-E C WH PCO P	3000 K	101 lm/W	1,100 lumen	1
912500100531	DN462B LED11S/840 PSU-E C WH PCO P	4000 K	105 lm/W	1,150 lumen	1
910505102114	DN472B LED20S/840 DIA-VLC-E C WH PCO P	4000 K	120 lm/W	2,025 lumen	-
912500100542	DN472B LED20S/830 PSU-E C WH PCO P	3000 K	103 lm/W	2,000 lumen	1
912500100543	DN472B LED20S/840	4000 K	108 lm/W	2,100 lumen	1

Order Code	Full Product Name	Correlated Color Temperature (Nom)	Luminous Efficacy (rated) (Nom)	Luminous Flux	Number of light sources
	PSU-E C WH				
	PCO P				

Light Technical (2/2)

Order Code	Full Product Name	Stroboscopic effect value (SVM)
912500100519	DN461B LED11S/840 PSU-E C WH P	-
912500100075	DN473B LED20S/840 PSU-E C WH PCC P	-
912500100526	DN471B LED20S/830 PSU-E C WH P	-
912500100527	DN471B LED20S/840 PSU-E C WH P	-
912500101314	DN471B LED30S/830 PSU-E C WH P	-
912500101315	DN471B LED30S/840 PSU-E C WH P	-
912500101326	DN471B LED30S/830 PSU-E C ELP3 WH P	-
912500101327	DN471B LED30S/840 PSU-E C ELP3 WH P	-
910505102113	DN472B LED20S/840 DIA-VLC-E C WH PCC P	-
910505102116	DN472B LED30S/840 DIA-VLC-E C WH PCC P	-
912500100070	DN472B LED20S/830 PSU-E C WH PCC P	-
912500100071	DN472B LED20S/840 PSU-E C WH PCC P	-
912500100522	DN470B LED20S/830 PSU-E C WH P	-
912500100523	DN470B LED20S/840 PSU-E C WH P	-
912500100547	DN470B LED20S/840 PSU-E C ELP3 WH P	-
912500101307	DN470B LED30S/840 PSU-E C WH P	-

Order Code	Full Product Name	Stroboscopic effect value (SVM)
912500101322	DN470B LED30S/830 PSU-E C ELP3 WH P	-
910505102035	DN460B LED11S/840 DIA-VLC-E C WH P	-
910505102074	DN462B LED11S/840 DIA-VLC-E C WH PCC P	-
912500100062	DN462B LED11S/830 PSU-E C WH PCC P	-
912500100063	DN462B LED11S/840 PSU-E C PCC WH P	-
912500100514	DN460B LED11S/830 PSU-E C WH P	0.4
912500100515	DN460B LED11S/840 PSU-E C WH P	-
912500100535	DN460B LED11S/840 PSU-E C ELP3 WH P	-
910505102073	DN462B LED11S/830 DIA-VLC-E C WH PCO P	-
910505102075	DN462B LED11S/840 DIA-VLC-E C WH PCO P	-
912500100530	DN462B LED11S/830 PSU-E C WH PCO P	-
912500100531	DN462B LED11S/840 PSU-E C WH PCO P	-
910505102114	DN472B LED20S/840 DIA-VLC-E C WH PCO P	-
912500100542	DN472B LED20S/830 PSU-E C WH PCO P	-
912500100543	DN472B LED20S/840 PSU-E C WH PCO P	-

Operating and Electrical

Order Code	Full Product Name	Input Voltage	Power Consumption
912500100519	DN461B LED11S/840 PSU-E C WH P	220-240 V	9.8 W
912500100075	DN473B LED20S/840 PSU-E C WH PCC P	220 to 240 V	16.8 W
912500100526	DN471B LED20S/830 PSU-E C WH P	220-240 V	16.8 W
912500100527	DN471B LED20S/840 PSU-E C WH P	220-240 V	16.8 W
912500101314	DN471B LED30S/830 PSU-E C WH P	220-240 V	23.5 W
912500101315	DN471B LED30S/840 PSU-E C WH P	220-240 V	23.5 W
912500101326	DN471B LED30S/830 PSU-E C ELP3 WH P	220-240 V	23.5 W
912500101327	DN471B LED30S/840 PSU-E C ELP3 WH P	220-240 V	23.5 W
910505102113	DN472B LED20S/840 DIA-VLC-E C WH PCC P	220-240 V	16.8 W
910505102116	DN472B LED30S/840 DIA-VLC-E C WH PCC P	220-240 V	23 W

Order Code	Full Product Name	Input Voltage	Power Consumption
912500100070	DN472B LED20S/830 PSU-E C WH PCC P	220 to 240 V	16.8 W
912500100071	DN472B LED20S/840 PSU-E C WH PCC P	220 to 240 V	16.8 W
912500100522	DN470B LED20S/830 PSU-E C WH P	220-240 V	16.8 W
912500100523	DN470B LED20S/840 PSU-E C WH P	220-240 V	16.8 W
912500100547	DN470B LED20S/840 PSU-E C ELP3 WH P	220-240 V	16.8 W
912500101307	DN470B LED30S/840 PSU-E C WH P	220-240 V	23.5 W
912500101322	DN470B LED30S/830 PSU-E C ELP3 WH P	220-240 V	23.5 W
910505102035	DN460B LED11S/840 DIA-VLC-E C WH P	220-240 V	9 W
910505102074	DN462B LED11S/840 DIA-VLC-E C WH PCC P	220-240 V	9 W
912500100062	DN462B LED11S/830 PSU-E C WH PCC P	220 to 240 V	9.8 W

Order Code	Full Product Name	Power	
		Input Voltage	Consumption
912500100063	DN462B LED11S/840 PSU-E C PCC WH P	220 to 240 V	9.8 W
912500100514	DN460B LED11S/830 PSU-E C WH P	220-240 V	9.8 W
912500100515	DN460B LED11S/840 PSU-E C WH P	220-240 V	9.8 W
912500100535	DN460B LED11S/840 PSU-E C ELP3 WH P	220-240 V	9.8 W
910505102073	DN462B LED11S/830 DIA-VLC-E C WH PCO P	220-240 V	9 W
910505102075	DN462B LED11S/840 DIA-VLC-E C WH PCO P	220-240 V	9 W

Order Code	Full Product Name	Power	
		Input Voltage	Consumption
912500100530	DN462B LED11S/830 PSU-E C WH PCO P	220-240 V	10.9 W
912500100531	DN462B LED11S/840 PSU-E C WH PCO P	220-240 V	10.9 W
910505102114	DN472B LED20S/840 DIA-VLC-E C WH PCO P	220-240 V	16.8 W
912500100542	DN472B LED20S/830 PSU-E C WH PCO P	220-240 V	19.4 W
912500100543	DN472B LED20S/840 PSU-E C WH PCO P	220-240 V	19.4 W

Temperature

Order Code	Full Product Name	Ambient temperature
		range
912500100519	DN461B LED11S/840 PSU-E C WH P	+10 to +40 °C
912500100075	DN473B LED20S/840 PSU-E C WH PCC P	-15 to +40 °C
912500100526	DN471B LED20S/830 PSU-E C WH P	+10 to +40 °C
912500100527	DN471B LED20S/840 PSU-E C WH P	+10 to +40 °C
912500101314	DN471B LED30S/830 PSU-E C WH P	+10 to +40 °C
912500101315	DN471B LED30S/840 PSU-E C WH P	+10 to +40 °C
912500101326	DN471B LED30S/830 PSU-E C ELP3 WH P	+10 to +40 °C
912500101327	DN471B LED30S/840 PSU-E C ELP3 WH P	+10 to +40 °C
910505102113	DN472B LED20S/840 DIA-VLC-E C WH PCC P	+10 to +40 °C
910505102116	DN472B LED30S/840 DIA-VLC-E C WH PCC P	+10 to +40 °C
912500100070	DN472B LED20S/830 PSU-E C WH PCC P	-15 to +40 °C
912500100071	DN472B LED20S/840 PSU-E C WH PCC P	-15 to +40 °C
912500100522	DN470B LED20S/830 PSU-E C WH P	+10 to +40 °C
912500100523	DN470B LED20S/840 PSU-E C WH P	+10 to +40 °C
912500100547	DN470B LED20S/840 PSU-E C ELP3 WH P	+10 to +40 °C
912500101307	DN470B LED30S/840 PSU-E C WH P	+10 to +40 °C
912500101322	DN470B LED30S/830 PSU-E C ELP3 WH P	+10 to +40 °C

Order Code	Full Product Name	Ambient temperature
		range
910505102035	DN460B LED11S/840 DIA-VLC-E C WH P	+10 to +40 °C
910505102074	DN462B LED11S/840 DIA-VLC-E C WH PCC P	+10 to +40 °C
912500100062	DN462B LED11S/830 PSU-E C WH PCC P	-15 to +40 °C
912500100063	DN462B LED11S/840 PSU-E C PCC WH P	-15 to +40 °C
912500100514	DN460B LED11S/830 PSU-E C WH P	+10 to +40 °C
912500100515	DN460B LED11S/840 PSU-E C WH P	+10 to +40 °C
912500100535	DN460B LED11S/840 PSU-E C ELP3 WH P	+10 to +40 °C
910505102073	DN462B LED11S/830 DIA-VLC-E C WH PCO P	+10 to +40 °C
910505102075	DN462B LED11S/840 DIA-VLC-E C WH PCO P	+10 to +40 °C
912500100530	DN462B LED11S/830 PSU-E C WH PCO P	-15 to +40 °C
912500100531	DN462B LED11S/840 PSU-E C WH PCO P	-15 to +40 °C
910505102114	DN472B LED20S/840 DIA-VLC-E C WH PCO P	+10 to +40 °C
912500100542	DN472B LED20S/830 PSU-E C WH PCO P	-15 to +40 °C
912500100543	DN472B LED20S/840 PSU-E C WH PCO P	-15 to +40 °C

Controls and Dimming

Order Code	Full Product Name	Dimmable
912500100519	DN461B LED11S/840 PSU-E C WH P	No
912500100075	DN473B LED20S/840 PSU-E C WH PCC P	No
912500100526	DN471B LED20S/830 PSU-E C WH P	No
912500100527	DN471B LED20S/840 PSU-E C WH P	No
912500101314	DN471B LED30S/830 PSU-E C WH P	No
912500101315	DN471B LED30S/840 PSU-E C WH P	No
912500101326	DN471B LED30S/830 PSU-E C ELP3 WH P	No
912500101327	DN471B LED30S/840 PSU-E C ELP3 WH P	No

Order Code	Full Product Name	Dimmable
910505102113	DN472B LED20S/840 DIA-VLC-E C WH PCC P	Yes
910505102116	DN472B LED30S/840 DIA-VLC-E C WH PCC P	Yes
912500100070	DN472B LED20S/830 PSU-E C WH PCC P	No
912500100071	DN472B LED20S/840 PSU-E C WH PCC P	No
912500100522	DN470B LED20S/830 PSU-E C WH P	No
912500100523	DN470B LED20S/840 PSU-E C WH P	No
912500100547	DN470B LED20S/840 PSU-E C ELP3 WH P	No
912500101307	DN470B LED30S/840 PSU-E C WH P	No

Order Code	Full Product Name	Dimmable
912500101322	DN470B LED30S/830 PSU-E C ELP3 WH P	No
910505102035	DN460B LED11S/840 DIA-VLC-E C WH P	Yes
910505102074	DN462B LED11S/840 DIA-VLC-E C WH PCC P	Yes
912500100062	DN462B LED11S/830 PSU-E C WH PCC P	No
912500100063	DN462B LED11S/840 PSU-E C PCC WH P	No
912500100514	DN460B LED11S/830 PSU-E C WH P	No
912500100515	DN460B LED11S/840 PSU-E C WH P	No
912500100535	DN460B LED11S/840 PSU-E C ELP3 WH P	No

Order Code	Full Product Name	Dimmable
910505102073	DN462B LED11S/830 DIA-VLC-E C WH PCO P	Yes
910505102075	DN462B LED11S/840 DIA-VLC-E C WH PCO P	Yes
912500100530	DN462B LED11S/830 PSU-E C WH PCO P	No
912500100531	DN462B LED11S/840 PSU-E C WH PCO P	No
910505102114	DN472B LED20S/840 DIA-VLC-E C WH PCO P	Yes
912500100542	DN472B LED20S/830 PSU-E C WH PCO P	No
912500100543	DN472B LED20S/840 PSU-E C WH PCO P	No

Approval and Application

Order Code	Full Product Name	Mech. impact protection code	Ingress protection code
912500100519	DN461B LED11S/840 PSU-E C WH P	IK02	IP20
912500100075	DN473B LED20S/840 PSU-E C WH PCC P	IK06	IP54
912500100526	DN471B LED20S/830 PSU-E C WH P	IK02	IP20
912500100527	DN471B LED20S/840 PSU-E C WH P	IK02	IP20
912500101314	DN471B LED30S/830 PSU-E C WH P	IK02	IP20
912500101315	DN471B LED30S/840 PSU-E C WH P	IK02	IP20
912500101326	DN471B LED30S/830 PSU-E C ELP3 WH P	IK02	IP20
912500101327	DN471B LED30S/840 PSU-E C ELP3 WH P	IK02	IP20
910505102113	DN472B LED20S/840 DIA-VLC-E C WH PCC P	IK02	IP20
910505102116	DN472B LED30S/840 DIA-VLC-E C WH PCC P	IK02	IP54
912500100070	DN472B LED20S/830 PSU-E C WH PCC P	IK06	IP54
912500100071	DN472B LED20S/840 PSU-E C WH PCC P	IK06	IP54
912500100522	DN470B LED20S/830 PSU-E C WH P	IK02	IP20
912500100523	DN470B LED20S/840 PSU-E C WH P	IK02	IP20
912500100547	DN470B LED20S/840 PSU-E C ELP3 WH P	IK02	IP20
912500101307	DN470B LED30S/840 PSU-E C WH P	IK02	IP20
912500101322	DN470B LED30S/830 PSU-E C ELP3 WH P	IK02	IP20

Order Code	Full Product Name	Mech. impact protection code	Ingress protection code
910505102035	DN460B LED11S/840 DIA-VLC-E C WH P	IK02	IP20
910505102074	DN462B LED11S/840 DIA-VLC-E C WH PCC P	IK02	IP20
912500100062	DN462B LED11S/830 PSU-E C WH PCC P	IK06	IP54
912500100063	DN462B LED11S/840 PSU-E C PCC WH P	IK06	IP54
912500100514	DN460B LED11S/830 PSU-E C WH P	IK02	IP20
912500100515	DN460B LED11S/840 PSU-E C WH P	IK02	IP20
912500100535	DN460B LED11S/840 PSU-E C ELP3 WH P	IK02	IP20
910505102073	DN462B LED11S/830 DIA-VLC-E C WH PCO P	IK02	IP20
910505102075	DN462B LED11S/840 DIA-VLC-E C WH PCO P	IK02	IP20
912500100530	DN462B LED11S/830 PSU-E C WH PCO P	IK06	IP54
912500100531	DN462B LED11S/840 PSU-E C WH PCO P	IK06	IP54
910505102114	DN472B LED20S/840 DIA-VLC-E C WH PCO P	IK02	IP20
912500100542	DN472B LED20S/830 PSU-E C WH PCO P	IK06	IP54
912500100543	DN472B LED20S/840 PSU-E C WH PCO P	IK06	IP54

Initial Performance (IEC Compliant)

Order Code	Full Product Name	Initial chromaticity
912500100519	DN461B LED11S/840 PSU-E C WH P	(0.38, 0.38) SDCM<3
912500100075	DN473B LED20S/840 PSU-E C WH PCC P	(0.38, 0.38) SDCM<3
912500100526	DN471B LED20S/830 PSU-E C WH P	(0.43, 0.40) SDCM<3
912500100527	DN471B LED20S/840 PSU-E C WH P	(0.38, 0.38) SDCM<3
912500101314	DN471B LED30S/830 PSU-E C WH P	(0.43, 0.40) SDCM<3
912500101315	DN471B LED30S/840 PSU-E C WH P	(0.38, 0.38) SDCM<3
912500101326	DN471B LED30S/830 PSU-E C ELP3 WH P	(0.43, 0.40) SDCM<3

Order Code	Full Product Name	Initial chromaticity
912500101327	DN471B LED30S/840 PSU-E C ELP3 WH P	(0.38, 0.38) SDCM<3
910505102113	DN472B LED20S/840 DIA-VLC-E C WH PCC P	(0.38, 0.38) SDCM<3
910505102116	DN472B LED30S/840 DIA-VLC-E C WH PCC P	(0.38, 0.38) SDCM<3
912500100070	DN472B LED20S/830 PSU-E C WH PCC P	(0.44, 0.40) SDCM<3
912500100071	DN472B LED20S/840 PSU-E C WH PCC P	(0.38, 0.38) SDCM<3
912500100522	DN470B LED20S/830 PSU-E C WH P	(0.43, 0.40) SDCM<3
912500100523	DN470B LED20S/840 PSU-E C WH P	(0.38, 0.38) SDCM<3

Order Code	Full Product Name	Initial chromaticity
912500100547	DN470B LED20S/840 PSU-E C ELP3 WH P	(0.38, 0.38) SDCM<3
912500101307	DN470B LED30S/840 PSU-E C WH P	(0.38, 0.38) SDCM<3
912500101322	DN470B LED30S/830 PSU-E C ELP3 WH P	(0.43, 0.40) SDCM<3
910505102035	DN460B LED11S/840 DIA-VLC-E C WH P	(0.38, 0.38) SDCM<3
910505102074	DN462B LED11S/840 DIA-VLC-E C WH PCC P	(0.38, 0.38) SDCM<3
912500100062	DN462B LED11S/830 PSU-E C WH PCC P	(0.44, 0.40) SDCM<3
912500100063	DN462B LED11S/840 PSU-E C PCC WH P	(0.38, 0.38) SDCM<3
912500100514	DN460B LED11S/830 PSU-E C WH P	(0.43, 0.40) SDCM<3
912500100515	DN460B LED11S/840 PSU-E C WH P	(0.38, 0.38) SDCM<3

Order Code	Full Product Name	Initial chromaticity
912500100535	DN460B LED11S/840 PSU-E C ELP3 WH P	(0.38, 0.38) SDCM<3
910505102073	DN462B LED11S/830 DIA-VLC-E C WH PCO P	(0.43, 0.40) SDCM<3
910505102075	DN462B LED11S/840 DIA-VLC-E C WH PCO P	(0.38, 0.38) SDCM<3
912500100530	DN462B LED11S/830 PSU-E C WH PCO P	(0.43, 0.40) SDCM<3
912500100531	DN462B LED11S/840 PSU-E C WH PCO P	(0.38, 0.38) SDCM<3
910505102114	DN472B LED20S/840 DIA-VLC-E C WH PCO P	(0.38, 0.38) SDCM<3
912500100542	DN472B LED20S/830 PSU-E C WH PCO P	(0.43, 0.40) SDCM<3
912500100543	DN472B LED20S/840 PSU-E C WH PCO P	(0.38, 0.38) SDCM<3

Over Time Performance (IEC Compliant)

Order Code	Full Product Name	Driver failure rate at 5000 h
912500100519	DN461B LED11S/840 PSU-E C WH P	1%
912500100075	DN473B LED20S/840 PSU-E C WH PCC P	1%
912500100526	DN471B LED20S/830 PSU-E C WH P	1%
912500100527	DN471B LED20S/840 PSU-E C WH P	1%
912500101314	DN471B LED30S/830 PSU-E C WH P	1%
912500101315	DN471B LED30S/840 PSU-E C WH P	1%
912500101326	DN471B LED30S/830 PSU-E C ELP3 WH P	1%
912500101327	DN471B LED30S/840 PSU-E C ELP3 WH P	1%
910505102113	DN472B LED20S/840 DIA-VLC-E C WH PCC P	-
910505102116	DN472B LED30S/840 DIA-VLC-E C WH PCC P	-
912500100070	DN472B LED20S/830 PSU-E C WH PCC P	1%
912500100071	DN472B LED20S/840 PSU-E C WH PCC P	1%
912500100522	DN470B LED20S/830 PSU-E C WH P	1%
912500100523	DN470B LED20S/840 PSU-E C WH P	1%
912500100547	DN470B LED20S/840 PSU-E C ELP3 WH P	1%
912500101307	DN470B LED30S/840 PSU-E C WH P	1%

Order Code	Full Product Name	Driver failure rate at 5000 h
912500101322	DN470B LED30S/830 PSU-E C ELP3 WH P	1%
910505102035	DN460B LED11S/840 DIA-VLC-E C WH P	-
910505102074	DN462B LED11S/840 DIA-VLC-E C WH PCC P	-
912500100062	DN462B LED11S/830 PSU-E C WH PCC P	1%
912500100063	DN462B LED11S/840 PSU-E C PCC WH P	1%
912500100514	DN460B LED11S/830 PSU-E C WH P	1%
912500100515	DN460B LED11S/840 PSU-E C WH P	1%
912500100535	DN460B LED11S/840 PSU-E C ELP3 WH P	1%
910505102073	DN462B LED11S/830 DIA-VLC-E C WH PCO P	-
910505102075	DN462B LED11S/840 DIA-VLC-E C WH PCO P	-
912500100530	DN462B LED11S/830 PSU-E C WH PCO P	1%
912500100531	DN462B LED11S/840 PSU-E C WH PCO P	1%
910505102114	DN472B LED20S/840 DIA-VLC-E C WH PCO P	-
912500100542	DN472B LED20S/830 PSU-E C WH PCO P	1%
912500100543	DN472B LED20S/840 PSU-E C WH PCO P	1%

Application Conditions

Order Code	Full Product Name	Maximum dim level
912500100519	DN461B LED11S/840 PSU-E C WH P	Not applicable
912500100075	DN473B LED20S/840 PSU-E C WH PCC P	Not applicable
912500100526	DN471B LED20S/830 PSU-E C WH P	Not applicable
912500100527	DN471B LED20S/840 PSU-E C WH P	Not applicable
912500101314	DN471B LED30S/830 PSU-E C WH P	Not applicable
912500101315	DN471B LED30S/840 PSU-E C WH P	Not applicable
912500101326	DN471B LED30S/830 PSU-E C ELP3 WH P	Not applicable
912500101327	DN471B LED30S/840 PSU-E C ELP3 WH P	Not applicable
910505102113	DN472B LED20S/840 DIA-VLC-E C WH PCC P	1%
910505102116	DN472B LED30S/840 DIA-VLC-E C WH PCC P	1%
912500100070	DN472B LED20S/830 PSU-E C WH PCC P	Not applicable
912500100071	DN472B LED20S/840 PSU-E C WH PCC P	Not applicable
912500100522	DN470B LED20S/830 PSU-E C WH P	Not applicable
912500100523	DN470B LED20S/840 PSU-E C WH P	Not applicable
912500100547	DN470B LED20S/840 PSU-E C ELP3 WH P	Not applicable
912500101307	DN470B LED30S/840 PSU-E C WH P	Not applicable

Order Code	Full Product Name	Maximum dim level
912500101322	DN470B LED30S/830 PSU-E C ELP3 WH P	Not applicable
910505102035	DN460B LED11S/840 DIA-VLC-E C WH P	1%
910505102074	DN462B LED11S/840 DIA-VLC-E C WH PCC P	1%
912500100062	DN462B LED11S/830 PSU-E C WH PCC P	Not applicable
912500100063	DN462B LED11S/840 PSU-E C PCC WH P	Not applicable
912500100514	DN460B LED11S/830 PSU-E C WH P	Not applicable
912500100515	DN460B LED11S/840 PSU-E C WH P	Not applicable
912500100535	DN460B LED11S/840 PSU-E C ELP3 WH P	Not applicable
910505102073	DN462B LED11S/830 DIA-VLC-E C WH PCO P	1%
910505102075	DN462B LED11S/840 DIA-VLC-E C WH PCO P	1%
912500100530	DN462B LED11S/830 PSU-E C WH PCO P	Not applicable
912500100531	DN462B LED11S/840 PSU-E C WH PCO P	Not applicable
910505102114	DN472B LED20S/840 DIA-VLC-E C WH PCO P	1%
912500100542	DN472B LED20S/830 PSU-E C WH PCO P	Not applicable
912500100543	DN472B LED20S/840 PSU-E C WH PCO P	Not applicable

