



Smart Post-top G3

BGP161 LED2300/WW PSU 220-240V 7043 GM

Smart Post-top G3, 2300 lumen, 27 W, Warm white, Symmetrical, Safety class I, Post-top for diameter 60 mm

Smart Post Top G3 inherits the classic look and style of the previous generation with improved system efficacy and light quality. The Smart Post Top G3 optimized optical design increases both horizontal and vertical uniformity. The highly efficient thermal system design ensures maximum heat transfer and longer LED service life. This reliable luminaire system operates well in both low and high temperature environments. It offers more than 11 years expected life, reducing maintenance frequency and cost (based on a 50,000 hour rated life and 12 hours operation per day). It provides a comfortable and safe atmosphere to gardens, residential areas, courtyards, side streets, squares, parks & playgrounds.

Product data

General Information	
Lamp family code	-
Light source replaceable	Yes
Number of gear units	1 unit
Driver included	Yes
Light source engine type	LED
CE mark	-
Warranty period	3 years
Flammability mark	For mounting on normally flammable surfaces
ENEC mark	-
EU RoHS compliant	Yes

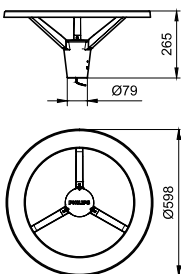
Light Technical	
Upward light output ratio	0
Luminous Flux	2,300 lumen
Standard tilt angle posttop	-
Standard tilt angle side entry	-
Correlated Color Temperature (Nom)	3000 K
Luminous Efficacy (rated) (Nom)	85.19 lm/W
Color rendering index (CRI)	70
Light source color	Warm white
Optical cover/lens type	Acrylate cover and semi-matt high-reflective optic
Luminaire light beam spread	-
Optic type outdoor	Symmetrical

Smart Post-top G3

Operating and Electrical	
Input Voltage	220 to 240 V
Line Frequency	50 to 60 Hz
Inrush current	2.1 A
Inrush time	22.3 ms
Power Consumption	27 W
Power Factor (Fraction)	0.9
Connection	Flying leads/wires
Cable	Cable 0.45 m without plug
Number of products on MCB of 16 A type B -	
Temperature	
Ambient temperature range	-40 to +50 °C
Controls and Dimming	
Dimmable	No
Driver/power unit/transformer	Power supply unit (On/Off)
Control interface	-
Constant light output	No
Mechanical and Housing	
Housing Material	Aluminum die cast
Reflector material	Acrylate
Optic material	Acrylate
Optical cover/lens material	Acrylate
Fixation material	Stainless steel
Housing Color	Dark gray
Mounting device	Post-top for diameter 60 mm
Optical cover/lens shape	Flat
Optical cover/lens finish	Frosted
Overall height	265 mm

Overall diameter	578 mm
Effective projected area	0.11 m ²
Approval and Application	
Ingress protection code	IP65 [Dust penetration-protected, jet-proof]
Mech. impact protection code	IK07 [2 J reinforced]
Surge Protection (Common/Differential)	4/2 kV
Protection class IEC	Safety class I
Initial Performance (IEC Compliant)	
Initial chromaticity	(0.43,0.40) SDCM ≤ 5
Luminous flux tolerance	+/-10%
Power consumption tolerance	+/-10%
Application Conditions	
Maximum dim level	Not applicable
Product Data	
Full product code	872016972873899
Order product name	BGP161 LED2300/WW PSU 220-240V 7043 GM
Order code	911401834698
Numerator - Quantity Per Pack	1
Numerator - Packs per outer box	2
Material Nr. (12NC)	911401834698
Full product name	BGP161 LED2300/WW PSU 220-240V 7043 GM
EAN/UPC - Case	8720169728738
EAN/UPC - Product/Case	8720169728738

Dimensional drawing



Smart Post-top G3

