



Xtanium Outdoor LED Drivers Dimmable (1-10 V)

Xtanium 250w 0.7A 1-10V 230V-Q sXt

LED-based light sources are an excellent solution for outdoor environments. They are long-lasting and low-maintenance. However, to get the best out of the LEDs, these light sources require highly reliable and efficient LED drivers. Philips Xtanium Dimmable (1-10 V) Output LED Outdoor Drivers are specifically designed to deliver reliable performance and protection while meeting strict performance, approval and application requirements.

Product data

General Information		Output power (nom.)	
Number of products on MCB (16 A type B) (max.)	4	Output power (nom.)	124.6-250 W
Operating and Electrical		Output voltage	178-357 V
Input frequency	50 to 60 Hz	Default output current	700 mA
Output current ripple (max.)	15 %	Inrush current width to 50% of peak	482 µs
Maximum efficiency	93 %	Energy metering	False
Output current (max.)	700 mA	Constant current (CC)	True
Output current (nom.)	700 mA	Constant voltage (CV)	False
Output current tolerance (max.)	5 %	Diagnostics	False
Output current tolerance (min.)	-5 %	Wiring	
Input voltage (AC)	220-240 V	Connector type input terminals	cable
Power factor (min.)	0.95	Hot-wiring	No
Input current (nom.)	1.245 A	Connector type output terminals	cable
Inrush current peak (max.)	53.4 A	Output wire cross section (max.)	1.5 mm ²
		Output wire cross section (min.)	0.25 mm ²
		Cable length from device to lamp	0.6 m

Xitanium Outdoor LED Drivers Dimmable (1-10 V)

Input wire strip length	9-10 mm
Output wire strip length	9-10 mm
Input wire cross section (max.)	1.5 mm ²
Input wire cross section (min.)	0.25 mm ²

Temperature

T-ambient (max.)	55 °C
T-ambient (min.)	-40 °C
T storage (max.)	80 °C
T storage (min.)	-40 °C
T-case lifetime (nom.)	70 °C
T-Case maximum (max.)	80 °C

Controls and Dimming

Dimmable	Yes
Control interface	1-10V
Dimming range	100-10 %

Mechanical and Housing

Housing	Q-can
Housing dimensions	215.8 x 89.4 x 42

Approval and Application

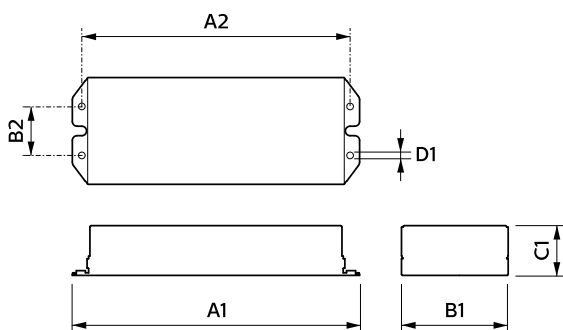
Surge protection (common/differential)	4/4 kV
--	--------

Relative humidity (operation) (max.)	95 %
Relative humidity (operation) (min.)	10 %
Relative humidity (storage)	10-95 %
Isolation classification	Class I
Short-circuit protection	Protected
Over power protection	Protected
Open circuit protection	Protected
Approval marks	CCC certificate CE marking
Corridor mode	False

Product Data

Full product code	694793916957300
Order product name	Xitanium Dim 250W 0.7A 1-10V 230V Q
EAN/UPC – product	6947939169573
Order code	16957300
SAP numerator – quantity per pack	1
Numerator – packs per outer box	9
SAP material	929000838508
SAP net weight (piece)	1.305 kg

Dimensional drawing



Xitanium Dim 250W 0.70A 1-10V 230V Q

Product	A1	B1	C1	A2	D1
Xitanium Dim 250W 0.7A 1-10V 230V Q	240.8 mm	89.4 mm	42 mm	224.62 mm	6.34 mm

