



# MASTER LEDtube InstantFit HF T5

## Master LEDtube HF 1500mm HO 26W 830 T5 OE

The Philips MASTER LEDtube integrates a LED light source into a traditional fluorescent form factor. Its unique design creates a perfectly uniform visual appearance, which cannot be distinguished from traditional fluorescent. These T5 lighting tubes are the right choice for absolute performance and are designed to stand up to everyday conditions. Unparalleled savings thanks to low energy consumption and an exceptionally long lifetime make these T5 LED tubes the choice for every demanding application.

### Product data

Operating and Electrical	
Line Frequency	20K to 140K Hz
Input Frequency	20K to 140K Hz
Power Consumption	26 W
Starting Time (Nom)	0.5 s
Warm-up time to 60% light	0.5 s
Power Factor (Fraction)	0.9
Voltage (Nom)	60-120 V

General Information	
Cap-Base	G5 [G5]
Nominal lifetime	60,000 hour(s)
Switching Cycle	50,000
Lighting Technology	LED
Flux measurement reference	Sphere

Light Technical	
Color Code	830 [CCT of 3000K]

Beam Angle (Nom)	
Beam Angle (Nom)	200 degree(s)

Luminous Flux	
Luminous Flux	3,700 lumen

Color Designation	
Color Designation	White (WH)

Correlated Color Temperature (Nom)	
Correlated Color Temperature (Nom)	3000 K

Luminous Efficacy (rated) (Nom)	
Luminous Efficacy (rated) (Nom)	142.00 lm/W

Color Consistency	
Color Consistency	<6

Color rendering index (CRI)	
Color rendering index (CRI)	80

LLMF At End Of Nominal Lifetime (Nom)	
LLMF At End Of Nominal Lifetime (Nom)	70 %

Temperature	
Ambient temperature range	-20 °C to 45 °C
T-Case Maximum (Nom)	50 °C

Controls and Dimming	
Dimmable	Yes - Check ballast compatibility

Mechanical and Housing	
Bulb Finish	Frosted

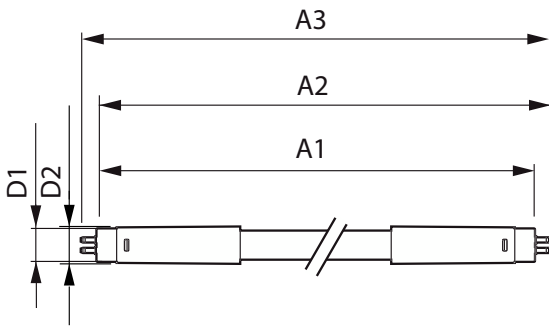
# MASTER LEDtube InstantFit HF T5

Bulb Material	Glass
Product Length	1,500 mm
Bulb Shape	Tube, double-ended
<b>Approval and Application</b>	
Energy Efficiency Class	E
Energy Saving Product	Yes
Approval Marks	RoHS compliance TUV CE marking KEMA Keur certificate
Energy Consumption kWh/1000 h	26 kWh
EPREL Registration Number	1384143
CE mark	Yes
EU RoHS compliant	Yes

## Product Data

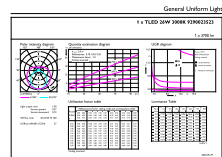
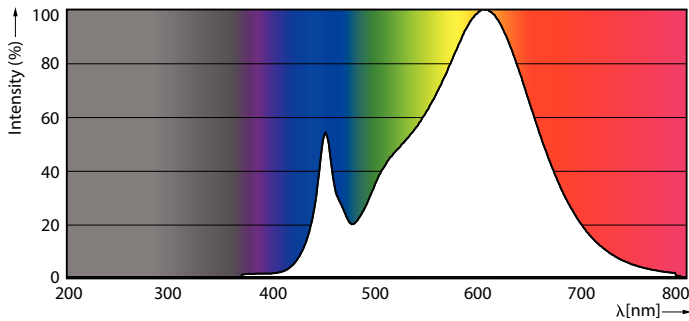
Full product code	871869974957600
Order product name	MAS LEDtube HF 1500mm HO 26W 830 T5 OE
Order code	74957600
Numerator - Quantity Per Pack	1
Numerator - Packs per outer box	10
Material number (12NC)	929002352302
Full product name	Master LEDtube HF 1500mm HO 26W 830 T5 OE
EAN/UPC - Case	8718699749583

## Dimensional drawing



Product	D1	D2	A1	A2	A3
MAS LEDtube HF 1500mm HO 26W 830 T5 OE	15.5 mm	19 mm	1,449 mm	1,456 mm	1,463 mm

## Photometric data

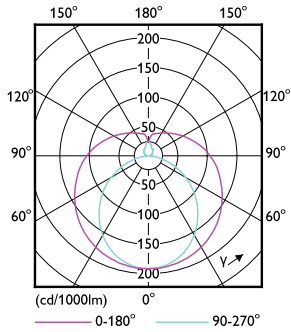


Spectral Power Distribution Colour - MAS LEDtube HF 1500mm HO 26W 830 T5 OE

General uniform lighting - MAS LEDtube HF 1500mm HO 26W 830 T5 OE

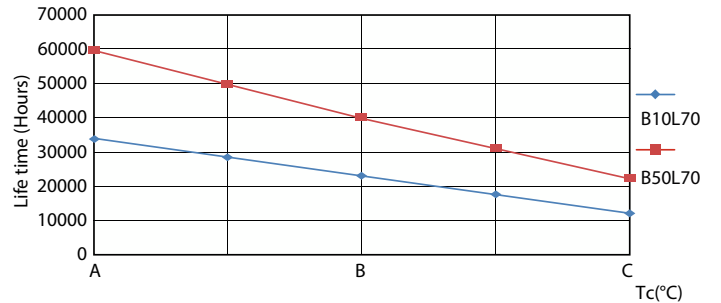
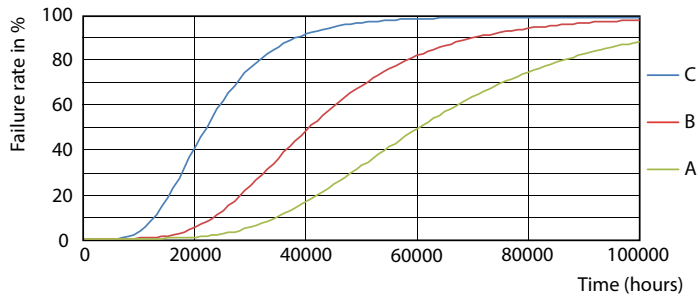
# MASTER LEDtube InstantFit HF T5

## Photometric data



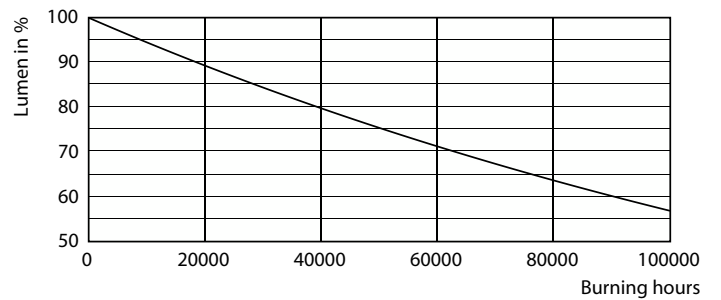
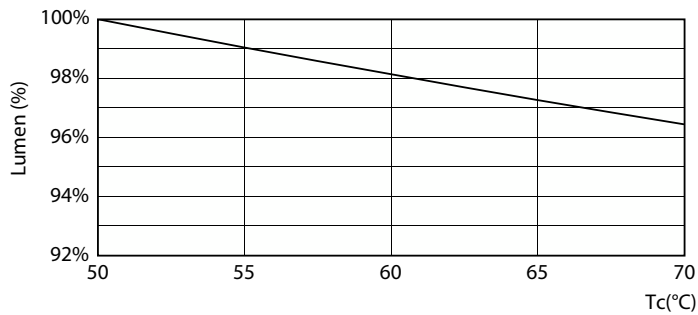
Light Distribution Diagram - MAS LEDtube HF 1500mm HO 26W 830 T5 OE

## Lifetime



Life Expectancy Diagram - MAS LEDtube HF 1500mm HO 26W 830 T5 OE

Life Expectancy Diagram - MAS LEDtube HF 1500mm HO 26W 830 T5 OE

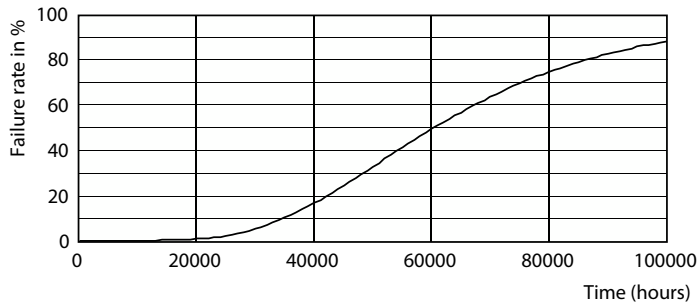


Lumen Maintenance Diagram - MAS LEDtube HF 1500mm HO 26W 830 T5 OE

Lumen Maintenance Diagram - MAS LEDtube HF 1500mm HO 26W 830 T5 OE

# MASTER LEDtube InstantFit HF T5

## Lifetime



Life Expectancy Diagram - MAS LEDtube HF 1500mm HO 26W 830 T5 OE

