



# MASTER LEDtube InstantFit HF T5

## Master LEDtube HF 1500mm HO 26W 865 T5 OE

The Philips MASTER LEDtube integrates an LED light source into a traditional fluorescent form factor. Its unique design creates a perfectly uniform visual appearance, which cannot be distinguished from traditional fluorescents. These T5 lighting tubes are the right choice for absolute performance and are designed to stand up to everyday conditions. Unparalleled savings, thanks to low energy consumption and an exceptionally long lifetime, make these T5 LED tubes the choice for every demanding applications.

### Product data

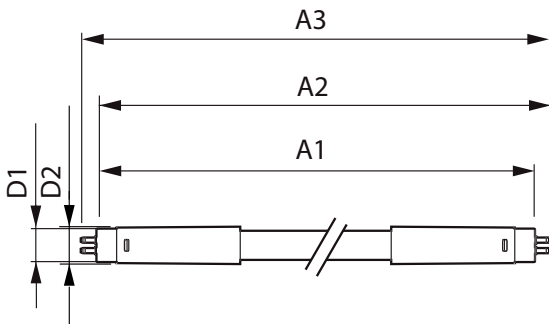
General information		LLMF at end of nominal lifetime (nom.) 70 %	
Cap base	G5 [ G5]		
EU RoHS compliant	Yes		
Nominal lifetime (nom.)	60000 h		
Switching cycle	50000		
Technical type	26-49W		
	Sphere		
Tier	MASTER		
Light technical		Operating and electrical	
Colour Code	865 [ CCT of 6,500 K]	Input frequency	20 K to 140 K Hz
Beam Angle (Nom)	200 °	Power (Rated) (Nom)	26 W
Luminous flux (nom.)	3900 lm	Lamp current (max.)	420 mA
Colour designation	Cool Daylight	Lamp current (min.)	150 mA
Correlated Colour Temperature (Nom)	6500 K	Starting time (nom.)	0.5 s
Luminous efficacy (rated) (nom.)	150 lm/W	Warm-up time to 60% light (nom.)	0.5 s
Colour consistency	<6	Power factor (nom.)	0.9
Colour rendering index (nom.)	80	Voltage (Nom)	60-120 V
		Temperature	
		T-ambient (max.)	45 °C
		T-ambient (min.)	-20 °C
		T storage (max.)	65 °C
		T storage (min.)	-40 °C

# MASTER LEDtube InstantFit HF T5

T-Case maximum (nom.)	50 °C
<b>Controls and dimming</b>	
Dimmable	Yes – Check ballast compatibility
<b>Mechanical and housing</b>	
Lamp Finish	Frosted
Bulb material	Glass
Product length	1500 mm
Bulb shape	Tube, double-ended
<b>Approval and application</b>	
Energy Efficiency Class	D
Energy-saving product	Yes
Approval marks	TUV
Approval marks	RoHS compliance CE marking KEMA Keur certificate

Energy consumption kWh/1,000 hours	26 kWh
	406214
<b>Product data</b>	
Full product code	871869974961300
Order product name	Master LEDtube HF 1500mm HO 26W 865 T5
	OE
EAN/UPC – product	8718699749613
Order code	74961300
SAP numerator – quantity per pack	1
Numerator – packs per outer box	10
SAP material	929002352502
Net Weight (Piece)	0.380 kg

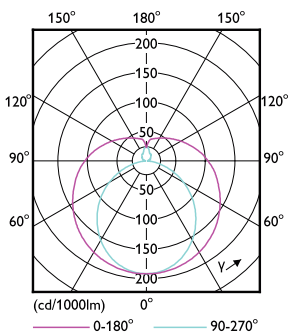
## Dimensional drawing



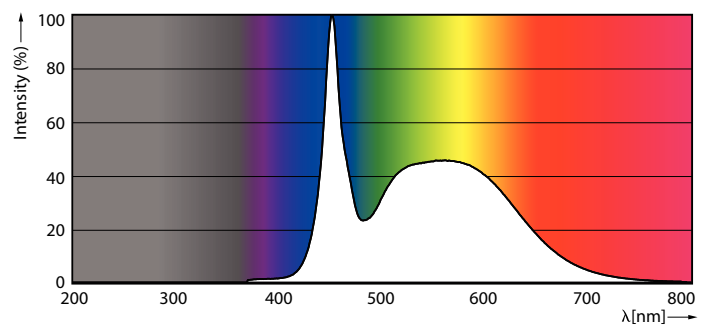
Master LEDtube HF 1500mm HO 26W 865 T5 OE

Product	D1	D2	A1	A2	A3
Master LEDtube HF 1500mm HO 26W 865 T5 OE	15.5 mm	19 mm	1449 mm	1456 mm	1463 mm

## Photometric data



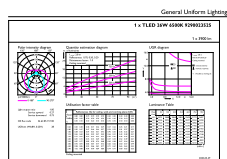
LEDtube MAS 26W G5 3700lm



LEDtube MAS 26W G5 3900lm 865

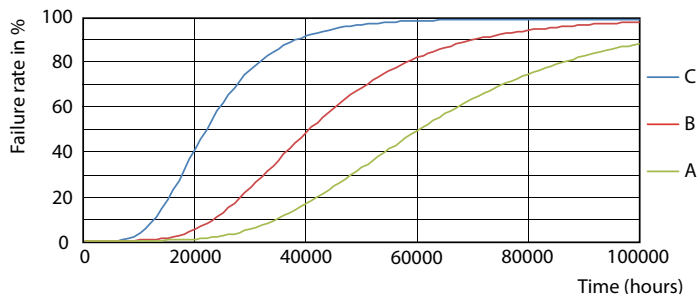
# MASTER LEDtube InstantFit HF T5

## Photometric data

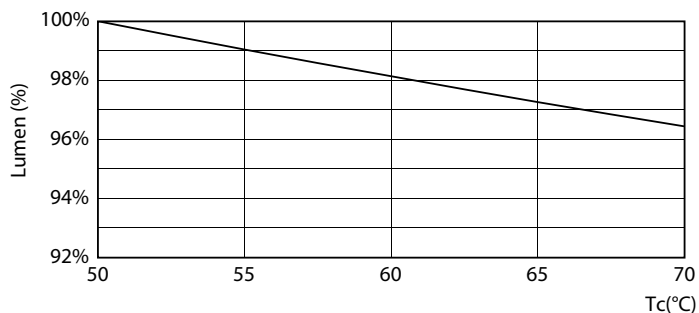


LEDtube MAS 26W G5 3900lm 865 1500mm

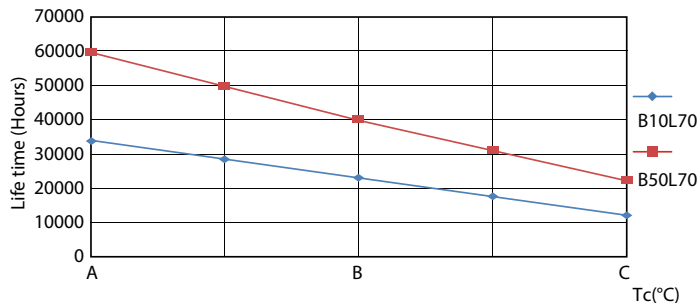
## Lifetime



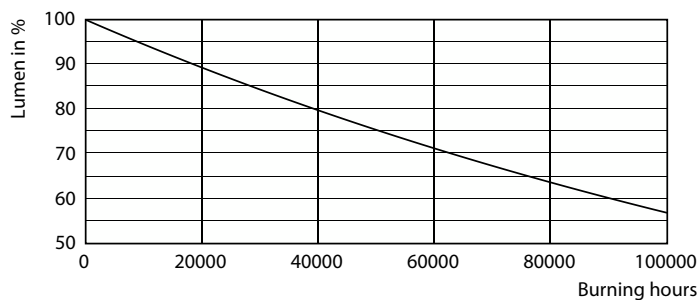
FailureRate



LEDtube 26W 60K LumenVsTc 2



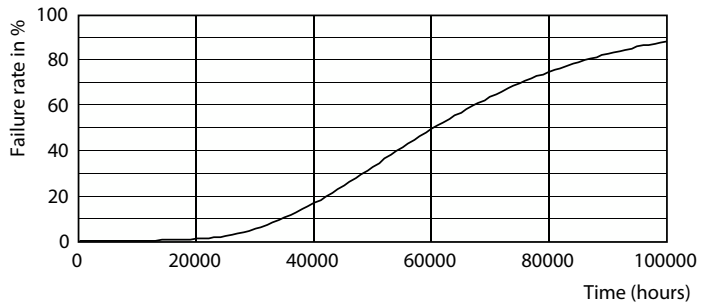
LifetimeVsTc



Lumen Maintenance Diagram

# MASTER LEDtube InstantFit HF T5

## Lifetime



### Life Expectancy Diagram

