



MASTER LEDtube Mains T5

MASTER LEDtube 1200mm HE 16.5W 865 T5

The new Philips Master LEDtube Mains T5 brings simplicity to your lighting project. You don't need to pay attention to the driver technology anymore. Thanks to a unique design, Philips MASTER LEDtube Mains T5 installs in luminaires operating on mains power connection. So simple to operate! ;Perfectly safe, reliable & easy to install, the Philips MASTER LEDtube Mains T5 is the ideal alternative to standard fluorescent tubes to maximise value over lifetime with high energy savings and lower maintenance costs.

Product data

General information		Operating and electrical	
Cap base	G5 [G5]	Input frequency	50 to 60 Hz
EU RoHS compliant	Yes	Power (Rated) (Nom)	16.5 W
Nominal lifetime (nom.)	50000 h	Lamp current (max.)	180 mA
Switching cycle	200000	Lamp current (min.)	70 mA
Technical type	16.5-28W	Starting time (nom.)	0.5 s
		Warm-up time to 60% light (nom.)	0.5 s
		Power factor (nom.)	0.9
		Voltage (Nom)	100-240 V
Light technical		Temperature	
Colour Code	865 [CCT of 6,500 K]	T-ambient (max.)	45 °C
Beam Angle (Nom)	200 °	T-ambient (min.)	-20 °C
Luminous flux (nom.)	2500 lm	T storage (max.)	65 °C
Colour designation	Cool Daylight	T storage (min.)	-40 °C
Correlated Colour Temperature (Nom)	6500 K	T-Case maximum (nom.)	70 °C
Luminous efficacy (rated) (nom.)	151.00 lm/W		
Colour consistency	<6		
Colour rendering index (nom.)	80		
LLMF at end of nominal lifetime (nom.)	70 %		

MASTER LEDtube Mains T5

Controls and dimming

Dimmable No

Mechanical and housing

Lamp Finish Frosted
 Bulb material Glass
 Product length 1200 mm
 Bulb shape Tube, double-ended

Approval and application

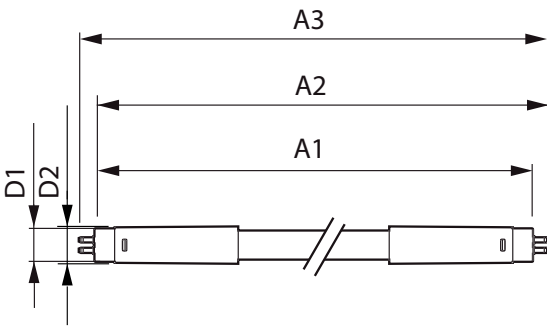
Energy-saving product Yes
 Approval marks RoHS compliance CE marking KEMA Keur certificate

Energy consumption kWh/1,000 hours 17 kWh

Product data

Full product code 871869978353200
 Order product name MASTER LEDtube 1200mm HE 16.5W 865 T5
 EAN/UPC – product 8718699783532
 Order code 78353200
 SAP numerator – quantity per pack 1
 Numerator – packs per outer box 10
 SAP material 929002421108
 Net Weight (Piece) 0.215 kg

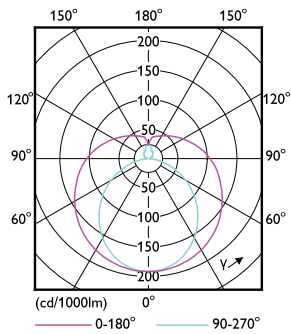
Dimensional drawing



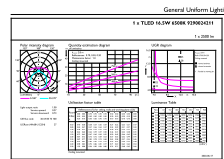
MASTER LEDtube 1200mm HE 16.5W 865 T5

Product	D1	D2	A1	A2	A3
MASTER LEDtube 1200mm HE 16.5W 865 T5	15.8 mm	19 mm	1149 mm	1156.1 mm	1163.2 mm

Photometric data



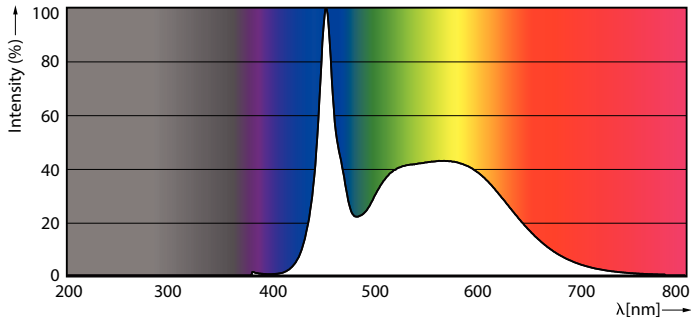
LEDtube MAS 8W G5 1000lm



LEDtube MAS 16,5W G5 2500lm 865

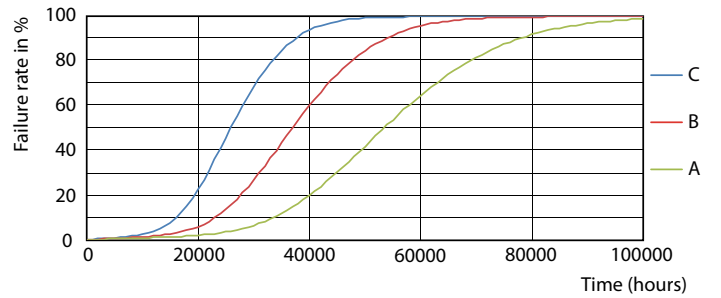
MASTER LEDtube Mains T5

Photometric data



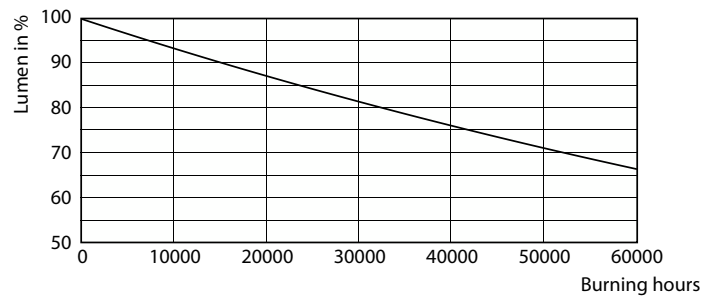
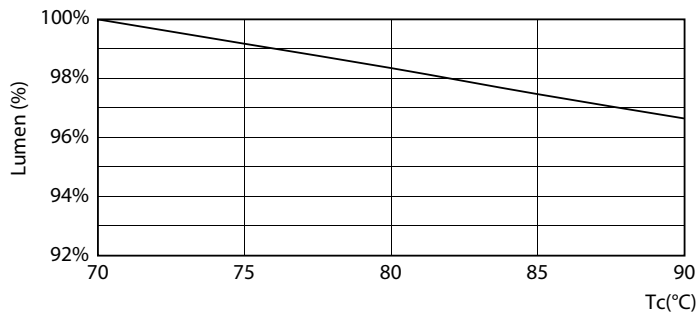
LEDtube MAS 16,5W G5 2500lm 865

Lifetime



Life Expectancy Diagram

LEDtube 50K FailureRate-LED

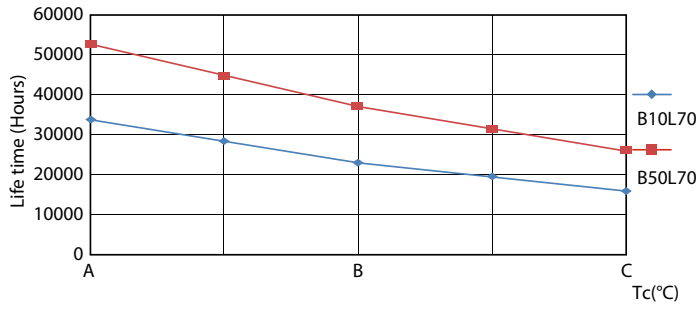


LEDtube 16,5W 50K LumenVsTc

Lumen Maintenance Diagram

MASTER LEDtube Mains T5

Lifetime



LEDtube 50K LifetimeVsTc-LED

