

MASTER Value LEDtube T8

MASTER LEDtube VLE 600mm HO 8W 830 T8

A high-performance LED solution, the professional MASTER Value LED tube is ideal for replacing T8 fluorescent lamps using EM ballast or installing directly on the mains. This product provides an optimal combination of value and performance – for use in all general lighting, office, industry, retail and hospitality applications. The unique design of this LED T8 tube light offers wide compatibility, safety and fast installation, as well as instant energy savings.

Product data

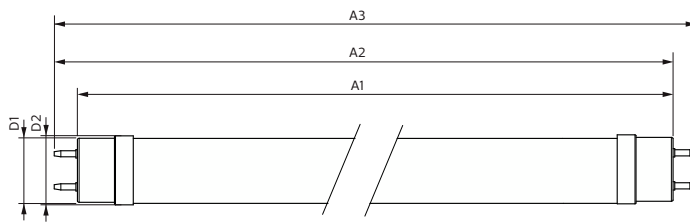
General information		Power (Rated) (Nom)	
Cap base	G13 [Medium Bi-Pin Fluorescent]		8 W
EU RoHS compliant	Yes	Lamp current (nom.)	39 mA
Nominal lifetime (nom.)	50000 h	Starting time (nom.)	0.5 s
Switching cycle	200000	Warm-up time to 60% light (nom.)	0.5 s
		Power factor (nom.)	0.9
		Voltage (Nom)	220-240 V
Light technical		Temperature	
Colour Code	830 [CCT of 3,000 K]	T-ambient (max.)	45 °C
Beam Angle (Nom)	240 °	T-ambient (min.)	-20 °C
Luminous flux (nom.)	1000 lm	T storage (max.)	65 °C
Colour designation	White (WH)	T storage (min.)	-40 °C
Correlated Colour Temperature (Nom)	3000 K	T-Case maximum (nom.)	55 °C
Luminous efficacy (rated) (nom.)	125.00 lm/W		
Colour consistency	<6	Controls and dimming	
Colour rendering index (nom.)	83	Dimmable	No
LLMF at end of nominal lifetime (nom.)	70 %		
Operating and electrical		Mechanical and housing	
Input frequency	50 to 60 Hz	Lamp Finish	Frosted

MASTER Value LEDtube T8

Bulb material	Glass
Product length	600 mm
Bulb shape	Tube, double-ended
Approval and application	
Energy-saving product	Yes
Approval marks	RoHS compliance KEMA Keur certificate
Product data	
Full product code	871951435068700

Order product name	MASTER LEDtube VLE 600mm HO 8W 830 T8
EAN/UPC – product	8719514350687
Order code	35068700
SAP numerator – quantity per pack	1
Numerator – packs per outer box	10
SAP material	929003069808
Net Weight (Piece)	0.120 kg

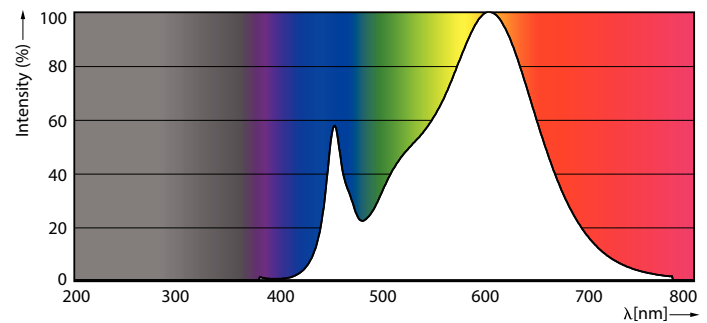
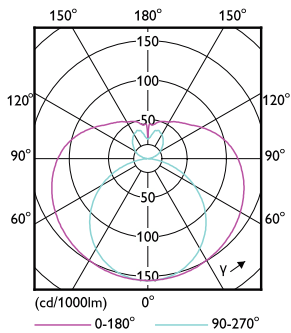
Dimensional drawing



Product	D1	D2	A1	A2	A3
MASTER LEDtube VLE 600mm HO 8W 830 T8	25.8 mm	28 mm	588.5 mm	595.5 mm	602.5 mm

MASTER LEDtube VLE 600mm HO 8W 830 T8

Photometric data

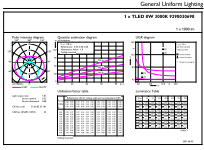


LEDtube MAS GMGC 14W G13 2000lm-LDD

LEDtube MAS GMGC 8W G13 1000lm 830-POC

MASTER Value LEDtube T8

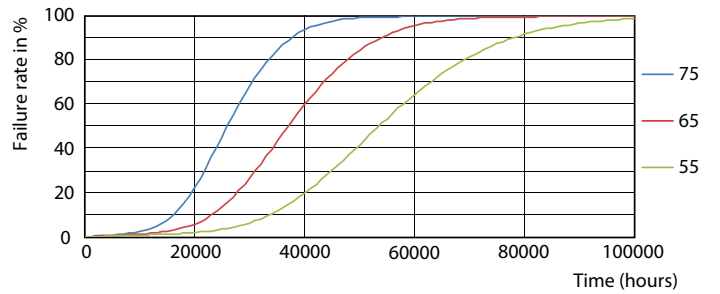
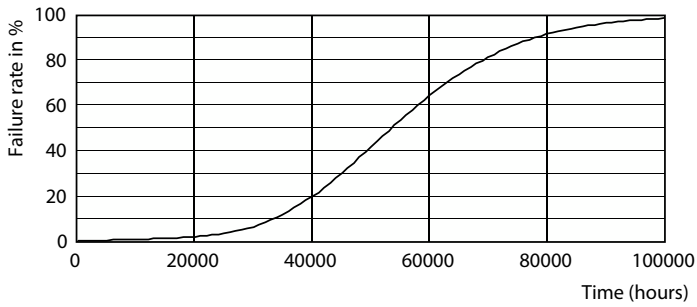
Photometric data



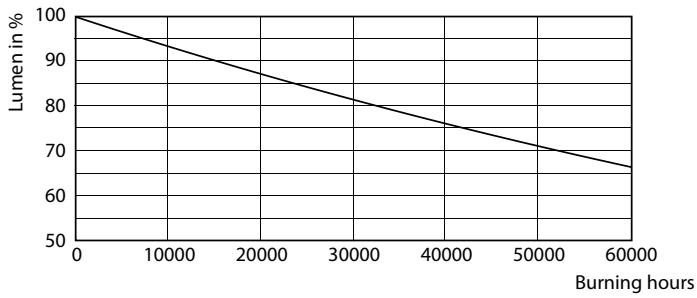
Technical Parameters 43 Page 10

LEDtube MAS GMGC 8W G13 1000lm 830-GUL

Lifetime

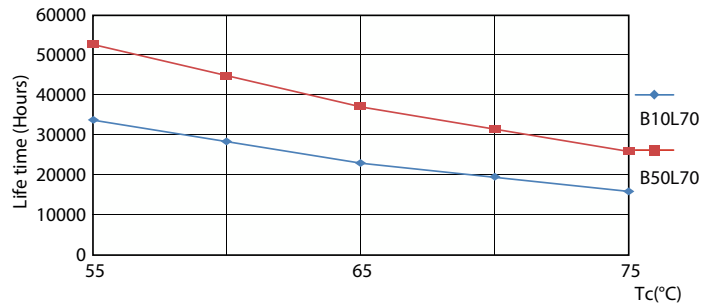


Life Expectancy Diagram



Lumen Maintenance Diagram

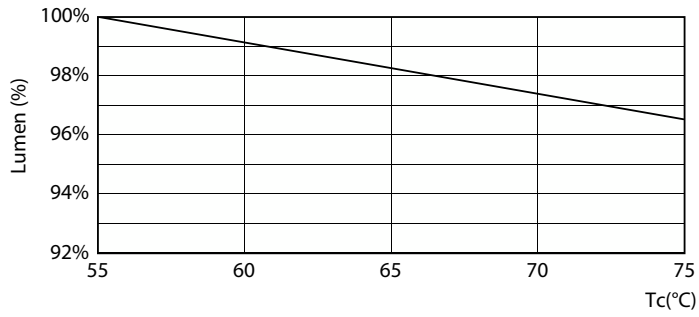
LEDtube 50K 5575 FailureRate-LED



LEDtube 50K 5575 LifetimeVsTc-LED

MASTER Value LEDtube T8

Lifetime



LEDtube MAS GMGC 8W 50K LumenVsTc-LMP

