

# MASTER Value LEDtube T8

## MASTER LEDtube VLE 1200mm HO 14W830 T8

A high-performance LED solution, the professional MASTER Value LED tube is ideal for replacing T8 fluorescent lamps using EM ballast or installing directly on the mains. This product provides an optimal combination of value and performance – for use in all general lighting, office, industry, retail and hospitality applications. The unique design of this LED T8 tube light offers wide compatibility, safety and fast installation, as well as instant energy savings.

### Product data

General information	
Cap base	G13 [ Medium Bi-Pin Fluorescent]
EU RoHS compliant	Yes
Nominal lifetime (nom.)	50000 h
Switching cycle	200000

Light technical	
Colour Code	830 [ CCT of 3,000 K]
Beam Angle (Nom)	240 °
Luminous flux (nom.)	2000 lm
Colour designation	White (WH)
Correlated Colour Temperature (Nom)	3000 K
Luminous efficacy (rated) (nom.)	142.00 lm/W
Colour consistency	<6
Colour rendering index (nom.)	83
LLMF at end of nominal lifetime (nom.)	70 %

Operating and electrical	
Input frequency	50 to 60 Hz

Power (Rated) (Nom)	14 W
Lamp current (nom.)	66 mA
Starting time (nom.)	0.5 s
Warm-up time to 60% light (nom.)	0.5 s
Power factor (nom.)	0.9
Voltage (Nom)	220-240 V

Temperature	
T-ambient (max.)	45 °C
T-ambient (min.)	-20 °C
T storage (max.)	65 °C
T storage (min.)	-40 °C
T-Case maximum (nom.)	55 °C

Controls and dimming	
Dimmable	No

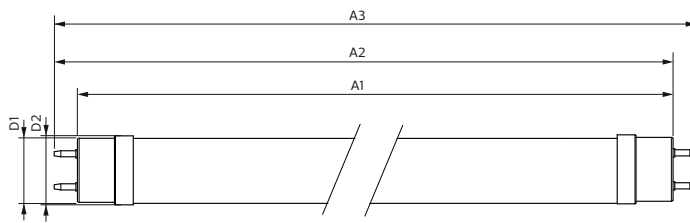
Mechanical and housing	
Lamp Finish	Frosted

# MASTER Value LEDtube T8

Bulb material	Glass
Product length	1200 mm
Bulb shape	Tube, double-ended
<b>Approval and application</b>	
Energy-saving product	Yes
Approval marks	RoHS compliance KEMA Keur certificate
<b>Product data</b>	
Full product code	871951435074800

Order product name	MASTER LEDtube VLE 1200mm HO 14W830 T8
EAN/UPC – product	8719514350748
Order code	35074800
SAP numerator – quantity per pack	1
Numerator – packs per outer box	10
SAP material	929003070108
Net Weight (Piece)	0.215 kg

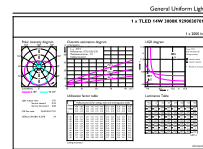
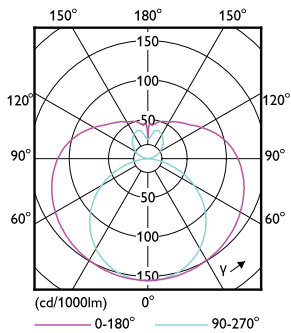
## Dimensional drawing



Product	D1	D2	A1	A2	A3
MASTER LEDtube VLE 1200mm HO 14W830 T8	25.8 mm	28 mm	1198.2 mm	1205.3 mm	1212.4 mm

## MASTER LEDtube VLE 1200mm HO 14W830 T8

## Photometric data

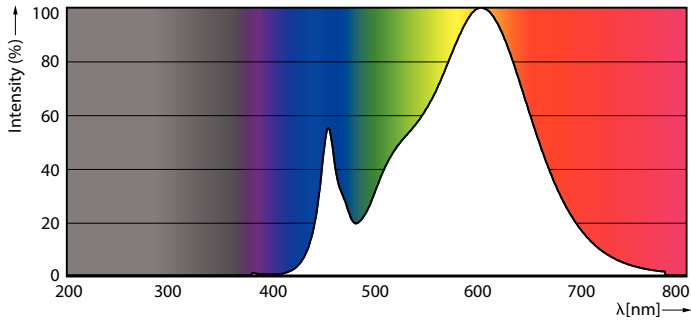


## LEDtube MAS GMGC 14W G13 2000lm-LDD

## LEDtube MAS GMGC 14W G13 2000lm 830-GUL

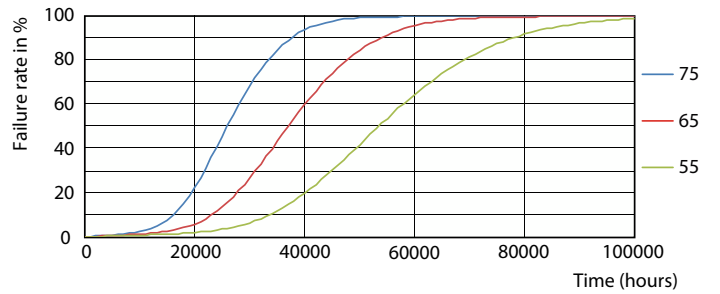
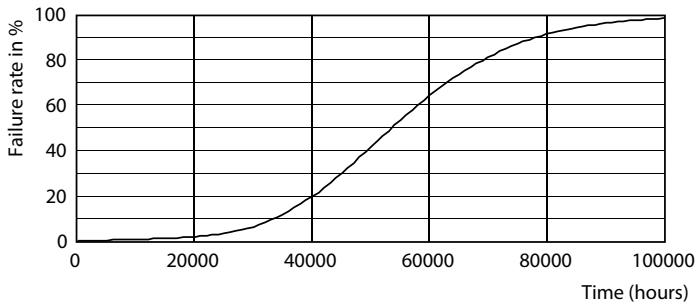
# MASTER Value LEDtube T8

## Photometric data

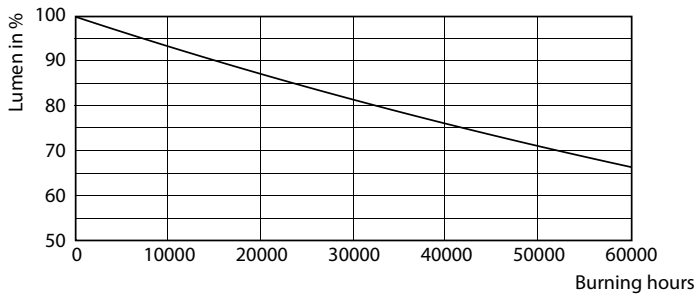


LEDtube MAS GMGC 14W G13 2000lm 830-POC

## Lifetime

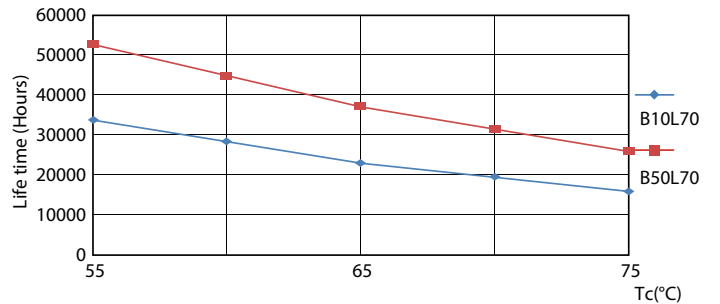


Life Expectancy Diagram



Lumen Maintenance Diagram

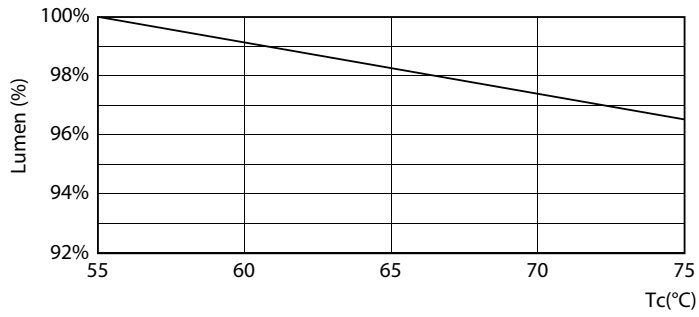
LEDtube 50K 5575 FailureRate-LED



LEDtube 50K 5575 LifetimeVsTc-LED

# MASTER Value LEDtube T8

## Lifetime



LEDtube MAS GMGC 8W 50K LumenVsTc-LMP

