



Speciality LEDtube

Sensor LEDtube 1200mm 16W 840 T8

Philips speciality LEDtube integrates a LED light source into a traditional fluorescent form factor. This product is the ideal solution for relamping to serve multi-purpose usage: it meets general lighting requirements, offers significant energy savings and special function such as Visible Light Communication.

Product data

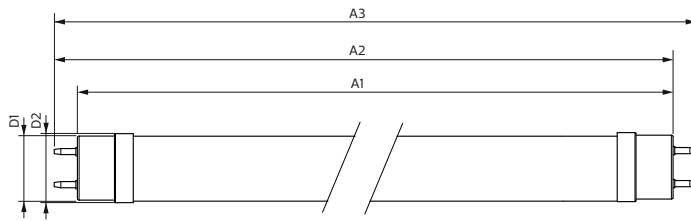
General information		
Cap base	G13 [Medium Bi-Pin Fluorescent]	
EU RoHS compliant	Yes	
Nominal lifetime (nom.)	30000 h	
Switching cycle	50000	
Light technical		
Colour Code	841 [CCT of 4100K (841)]	
Beam Angle (Nom)	240 °	
Luminous flux (nom.)	1800 lm	
Colour designation	Cool White (CW)	
Correlated Colour Temperature (Nom)	4000 K	
Luminous efficacy (rated) (nom.)	112 lm/W	
Colour consistency	<6	
Colour rendering index (nom.)	80	
LLMF at end of nominal lifetime (nom.)	70 %	
Operating and electrical		
Input frequency	50 to 60 Hz	
Power (Rated) (Nom)	16 W	
Lamp current (max.)	80 mA	
Lamp current (min.)	80 mA	
Starting time (nom.)	0.5 s	
Warm-up time to 60% light (nom.)		0.5 s
Power factor (nom.)		0.9
Voltage (Nom)		220-240 V
Temperature		
T-ambient (max.)		45 °C
T-ambient (min.)		-20 °C
T storage (max.)		65 °C
T storage (min.)		-40 °C
T-Case maximum (nom.)		50 °C
Controls and dimming		
Dimmable	Only with specific dimmers	
Mechanical and housing		
Lamp Finish	Frosted	
Bulb material	Glass	
Product length	1200 mm	
Bulb shape	Tube, double-ended	
Approval and application		
Energy-saving product	Yes	

Speciality LEDtube

Approval marks	RoHS compliance KEMA Keur certificate
Product data	
Full product code	692234194465900
Order product name	Sensor LEDtube 1200mm 16W 840 T8
EAN/UPC – product	6922341944659
Order code	94465900

SAP numerator – quantity per pack	1
Numerator – packs per outer box	10
SAP material	929003103310
Net Weight (Piece)	0.200 kg

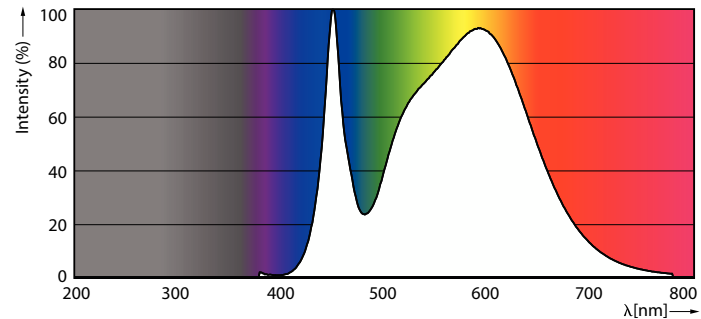
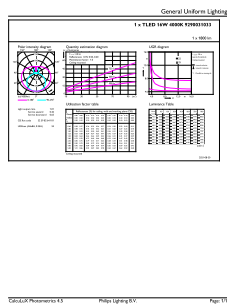
Dimensional drawing



Product	D1	D2	A1	A2	A3
Sensor LEDtube 1200mm 16W 840 T8	25.7 mm	28 mm	1198.2 mm	1205.3 mm	1212.4 mm

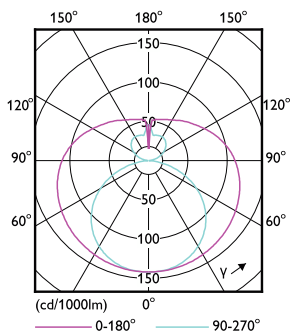
Sensor LEDtube 1200mm 16W 840 T8

Photometric data



General uniform lighting

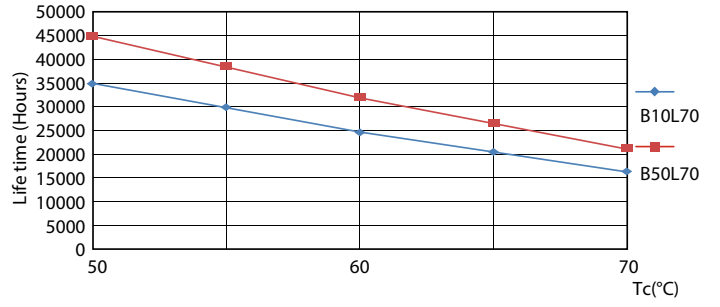
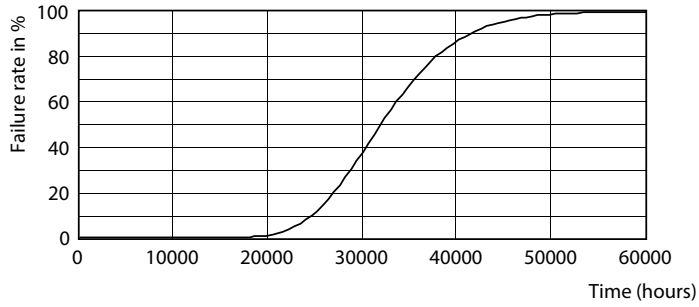
Spectral Power Distribution Colour



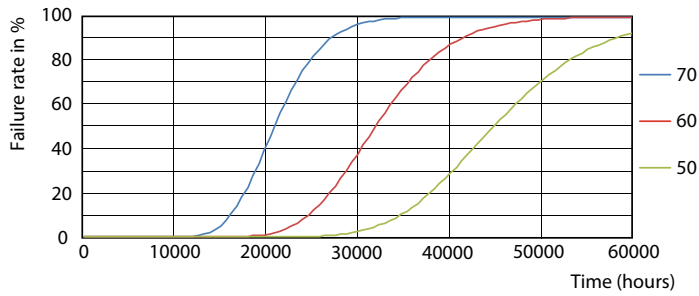
Light Distribution Diagram

Speciality LEDtube

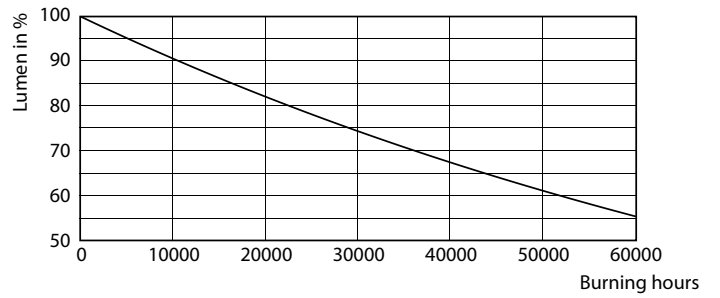
Lifetime



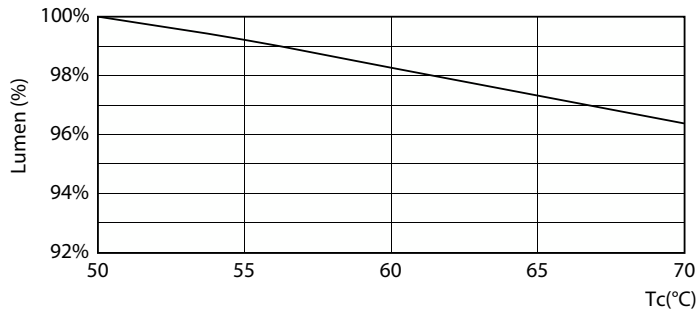
Life Expectancy Diagram



LifetimeVsTc



FailureRate



Lumen Maintenance Diagram

LumenVsTc

Speciality LEDtube

