

Speciality LEDtube

Sensor LEDtube 1200mm 16W 865 T8

Philips speciality LEDtube integrates a LED light source into a traditional fluorescent form factor. This product is the ideal solution for relamping to serve multi-purpose usage: it meets general lighting requirements, offers significant energy savings and special function such as Visible Light Communication.

Product data

General information	
Cap base	G13 [Medium Bi-Pin Fluorescent]
EU RoHS compliant	Yes
Nominal lifetime (nom.)	30000 h
Switching cycle	50000
Light technical	
Colour Code	865 [CCT of 6,500 K]
Beam Angle (Nom)	240 °
Luminous flux (nom.)	1800 lm
Colour designation	Cool Daylight
Correlated Colour Temperature (Nom)	6500 K
Luminous efficacy (rated) (nom.)	112 lm/W
Colour consistency	<6
Colour rendering index (nom.)	80
LLMF at end of nominal lifetime (nom.)	70 %
Operating and electrical	
Input frequency	50 to 60 Hz
Power (Rated) (Nom)	16 W
Lamp current (max.)	80 mA
Lamp current (min.)	80 mA
Starting time (nom.)	0.5 s

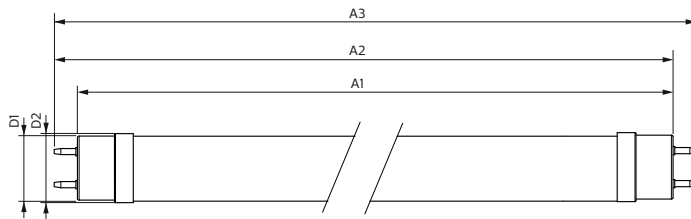
Warm-up time to 60% light (nom.)	0.5 s
Power factor (nom.)	0.9
Voltage (Nom)	220-240 V
Temperature	
T-ambient (max.)	45 °C
T-ambient (min.)	-20 °C
T storage (max.)	65 °C
T storage (min.)	-40 °C
T-Case maximum (nom.)	50 °C
Controls and dimming	
Dimmable	Only with specific dimmers
Mechanical and housing	
Lamp Finish	Frosted
Bulb material	Glass
Product length	1200 mm
Bulb shape	Tube, double-ended
Approval and application	
Energy-saving product	Yes

Speciality LEDtube

Approval marks	RoHS compliance KEMA Keur certificate
Product data	
Full product code	692234194467300
Order product name	Sensor LEDtube 1200mm 16W 865 T8
EAN/UPC – product	6922341944673
Order code	94467300

SAP numerator – quantity per pack	1
Numerator – packs per outer box	10
SAP material	929003103410
Net Weight (Piece)	0.200 kg

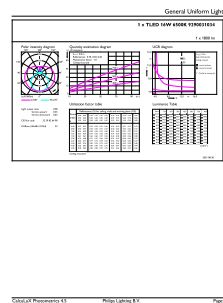
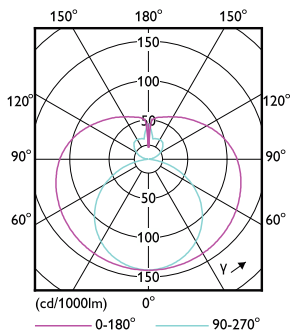
Dimensional drawing



Product	D1	D2	A1	A2	A3
Sensor LEDtube 1200mm 16W 865 T8	25.7 mm	28 mm	1198.2 mm	1205.3 mm	1212.4 mm

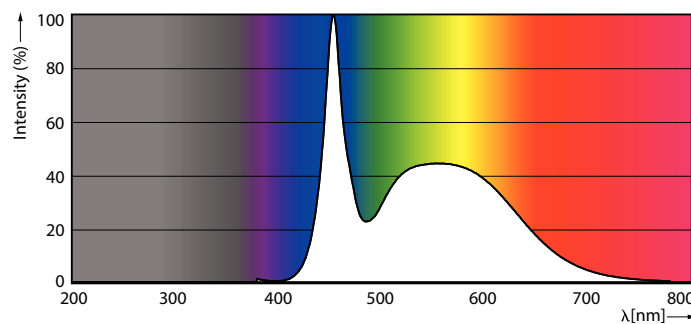
Sensor LEDtube 1200mm 16W 865 T8

Photometric data



Light Distribution Diagram

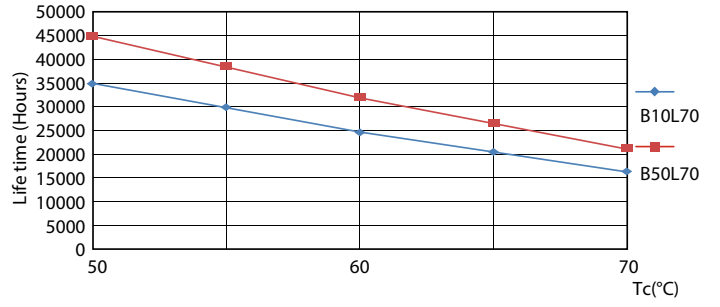
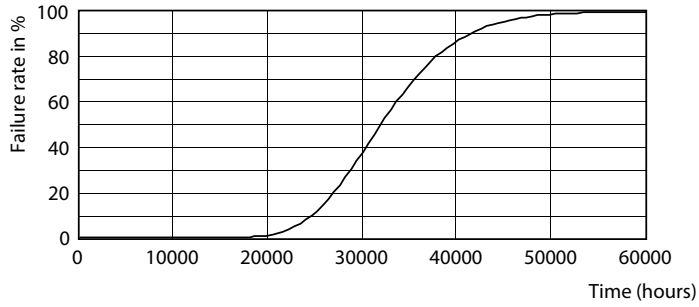
General uniform lighting



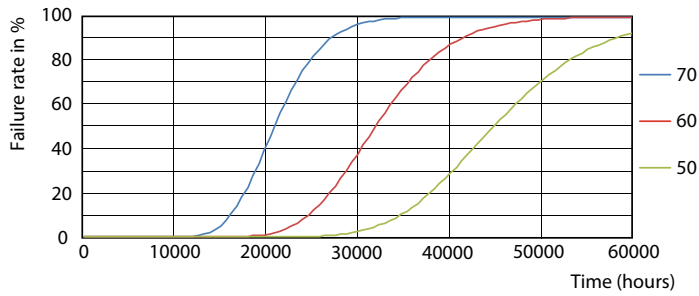
Spectral Power Distribution Colour

Speciality LEDtube

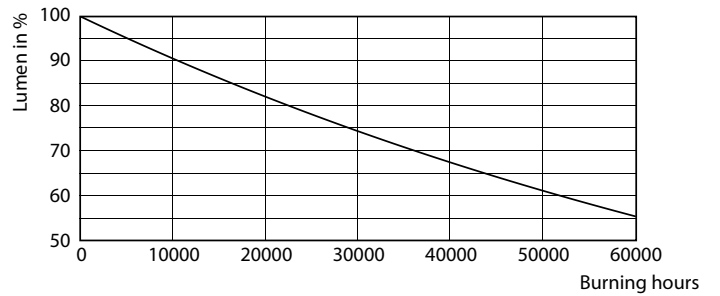
Lifetime



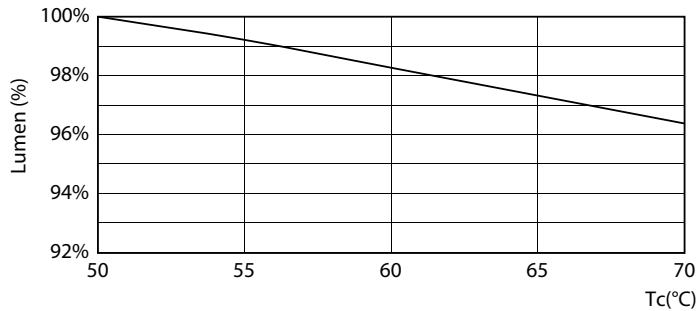
Life Expectancy Diagram



LifetimeVsTc



FailureRate



Lumen Maintenance Diagram

LumenVsTc

Speciality LEDtube

