



Maxos LED Industry – innovative, flexible solution delivers ideal light output

Maxos LED

Customers in the industrial and retail sectors are looking for general lighting solutions with a justifiable payback, while meeting all relevant norms for supermarkets and industry applications. For a limited investment, Maxos LED Industry offers best-in-class energy savings while delivering high lux levels at the required color temperatures and glare factors. The minimalistic Maxos LED Industry system comprises exchangeable mid-power LED boards mounted on a standard Maxos trunking rail. A choice of wide and medium-beam lenses means flexibility in light distribution. Compared with a conventional fluorescent installation, this highly efficient LED solution offers full payback in less than three years. And the benefits keep coming: the use of our upgradable LED engine platform makes Maxos LED Industry a truly future-proof solution.

Benefits

- Substantial energy savings for a limited investment
- Comfortable light, long lifetime
- Compatibility with proven Maxos trunking system

Maxos LED

Features

- Mid-power LED boards; exchangeable LED unit
- Up to 138 lm/W efficiency
- LED gear trays for T5 and TL-D-length trunkings (high lumen output); replacement LED gear trays with same lumen packages as installed T5 and TL-D solutions (lower wattage)
- Choice of narrow, medium, double asymmetric and asymmetric lenses
- Compatible with our standard Maxos and TTX400 rails for TL5 49 W and TL-D 58 W lengths

Application

- Industry
- Warehouses
- Supermarkets, DIY stores, electronics retailers
- Showrooms

Specifications

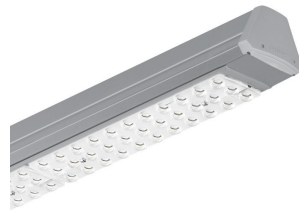
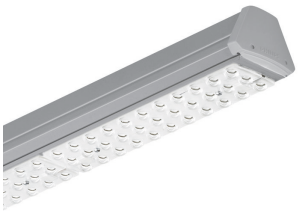
Type	4MX850	Driver failure rate	1% per 5000 hours
Light source	Philips Fortimo LEDline 3R	Average ambient temperature	+25 °C
Power	27 W (4000 lm, 4000 K) 39 W (5500 lm, 4000 K) 48 W (6600 lm, 4000 K) 60 W (8000 lm, 4000 K)	Operating temperature range	-20 to +35 °C
Beam angle	2 x 50° (wide beam) 2 x 25° (narrow beam) A20° (asymmetric) DA20° (double asymmetric) 2 x DA35° (double asymmetric)	Driver	Titanium, easy to replace
Luminous flux	Up to 6600 lumen	Power/Data supply	75 Watt (max power), programmable
Correlated Color Temperature	3000, 4000 or 5000 K	Mains voltage	220-240 V / 50-60 Hz
Color Rendering Index	> 80	Dimming	DALI dimmable and fixed output versions
Median useful life	70,000 hours	Options	Emergency lighting: central (EL) or with battery (EL3)
L70B50		Material	Gear tray: sheet metal Lens plate: PMMA
Median useful life	50,000 hours	Color	White (WH) and silver (SI)
L80B50		Connection	Electrical contact via standard Maxos through-wiring connector
Median useful life	25,000 hours	Maintenance	Via clicking out the gear unit from the rail
L90B50		Installation	Fixation of the 4MX850 unit on the Maxos trunking with springs Suspended or surface (ceiling) mounted
		Remarks	No exchange of bare LED engines, only the complete 4MX850 unit (1.5 m in length)

Maxos LED

Versions



Maxos Led Industry - LED Module,
system flux 8000 lm



Product details

Top view of insert



Close-up view from below



Partial side view



Maxos LED

Application Conditions

Ambient temperature range	-20 to +35 °C
Maximum dimming level	1%
Suitable for random switching	Not applicable

Approval and Application

Mech. impact protection code	IK02
Ingress protection code	IP20

Controls and Dimming

Dimmable	Yes
----------	-----

Operating and Electrical

Input Voltage	220-240 V
---------------	-----------

General Information

Beam angle of light source	120 °
Cap base	-
CE mark	CE mark
Protection class IEC	Safety class I (I)
Optical cover/lens type	PM
Driver included	Yes
ENEC mark	ENEC mark
Flammability mark	NO
Gear	-
Glow-wire test	650/30
Lamp family code	LED55S
Light source replaceable	No
Number of gear units	1 unit
Number of light sources	1
Product Family Code	4MX850
UL mark	-

Initial Performance (IEC Compliant)

Init. Colour rendering index	≥80
Initial luminous flux	5500 lm
Luminous flux tolerance	+/-10%

General Information

Order Code	Full Product Name	Optic type
66117699	4MX850 491 LED55S/830 PSD NB WH	NB
66118399	4MX850 491 LED55S/840 PSD NB WH	NB
66119099	4MX850 491 LED55S/830 PSD WB WH	WB
66120699	4MX850 491 LED55S/840 PSD WB WH	WB
66121399	4MX850 581 LED55S/830 PSD NB WH	NB
66122099	4MX850 581 LED55S/840 PSD NB WH	NB
66123799	4MX850 581 LED55S/830 PSD WB WH	WB
66124499	4MX850 581 LED55S/840 PSD WB WH	WB
66125199	4MX850 491 LED55S/830 PSD NB SI	NB
66126899	4MX850 491 LED55S/840 PSD NB SI	NB
66127599	4MX850 491 LED55S/830 PSD WB SI	WB
66128299	4MX850 491 LED55S/840 PSD WB SI	WB
66129999	4MX850 581 LED55S/830 PSD NB SI	NB
66130599	4MX850 581 LED55S/840 PSD NB SI	NB
66131299	4MX850 581 LED55S/830 PSD WB SI	WB
66132999	4MX850 581 LED55S/840 PSD WB SI	WB

Initial Performance (IEC Compliant)

Order Code	Full Product Name	Initial chromaticity	Init. Corr. Colour Temperature	Initial LED luminaire efficacy	Initial input power	Order Code	Full Product Name	Initial chromaticity	Init. Corr. Colour Temperature	Initial LED luminaire efficacy	Initial input power
66117699	4MX850 491 LED55S/830 PSD NB WH	(0.43, 0.40) SDCM <3.5	3000 K	157 lm/W	35 W	66120699	4MX850 491 LED55S/840 PSD WB WH	(0.38, 0.38) SDCM <3.5	4000 K	167 lm/W	33 W
66118399	4MX850 491 LED55S/840 PSD NB WH	(0.38, 0.38) SDCM <3.5	4000 K	167 lm/W	33 W	66121399	4MX850 581 LED55S/830 PSD NB WH	(0.43, 0.40) SDCM <3.5	3000 K	157 lm/W	35 W
66119099	4MX850 491 LED55S/830 PSD WB WH	(0.43, 0.40) SDCM <3.5	3000 K	157 lm/W	35 W	66122099	4MX850 581 LED55S/840 PSD NB WH	(0.38, 0.38) SDCM <3.5	4000 K	167 lm/W	33 W

Maxos LED

Order Code	Full Product Name	Initial chromaticity	Init. Corr. Colour Temperature	Initial LED luminaire efficacy	Initial input power
66123799	4MX850 581 LED55S/830 PSD WB WH	(0.43, 0.40)	3000 K	157 lm/W	35 W
66124499	4MX850 581 LED55S/840 PSD WB WH	(0.38, 0.38)	4000 K	167 lm/W	33 W
66125199	4MX850 491 LED55S/830 PSD NB SI	(0.43, 0.40)	3000 K	157 lm/W	35 W
66126899	4MX850 491 LED55S/840 PSD NB SI	(0.38, 0.38)	4000 K	167 lm/W	33 W
66127599	4MX850 491 LED55S/830 PSD WB SI	(0.43, 0.40)	3000 K	157 lm/W	35 W

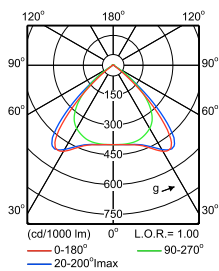
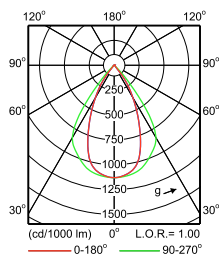
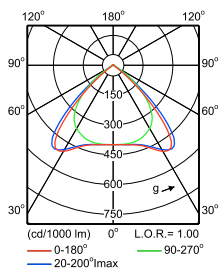
Order Code	Full Product Name	Initial chromaticity	Init. Corr. Colour Temperature	Initial LED luminaire efficacy	Initial input power
66128299	4MX850 491 LED55S/840 PSD WB SI	(0.38, 0.38)	4000 K	167 lm/W	33 W
66129999	4MX850 581 LED55S/830 PSD NB SI	(0.43, 0.40)	3000 K	157 lm/W	35 W
66130599	4MX850 581 LED55S/840 PSD NB SI	(0.38, 0.38)	4000 K	167 lm/W	33 W
66131299	4MX850 581 LED55S/830 PSD WB SI	(0.43, 0.40)	3000 K	157 lm/W	35 W
66132999	4MX850 581 LED55S/840 PSD WB SI	(0.38, 0.38)	4000 K	167 lm/W	33 W

Mechanical and Housing

Order Code	Full Product Name	Colour	Trunking length
66117699	4MX850 491 LED55S/830 PSD NB WH	White	491
66118399	4MX850 491 LED55S/840 PSD NB WH	White	491
66119099	4MX850 491 LED55S/830 PSD WB WH	White	491
66120699	4MX850 491 LED55S/840 PSD WB WH	White	491
66121399	4MX850 581 LED55S/830 PSD NB WH	White	581
66122099	4MX850 581 LED55S/840 PSD NB WH	White	581
66123799	4MX850 581 LED55S/830 PSD WB WH	White	581
66124499	4MX850 581 LED55S/840 PSD WB WH	White	581

Order Code	Full Product Name	Colour	Trunking length
66125199	4MX850 491 LED55S/830 PSD NB SI	Silver	491
66126899	4MX850 491 LED55S/840 PSD NB SI	Silver	491
66127599	4MX850 491 LED55S/830 PSD WB SI	Silver	491
66128299	4MX850 491 LED55S/840 PSD WB SI	Silver	491
66129999	4MX850 581 LED55S/830 PSD NB SI	Silver	581
66130599	4MX850 581 LED55S/840 PSD NB SI	Silver	581
66131299	4MX850 581 LED55S/830 PSD WB SI	Silver	581
66132999	4MX850 581 LED55S/840 PSD WB SI	Silver	581

Polar Wide Diagrams

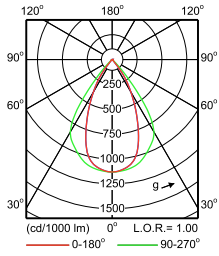


IFPS_4MX850 G3 581 1xLED80S/840 PSD WB-
 Polar Normal (separate)

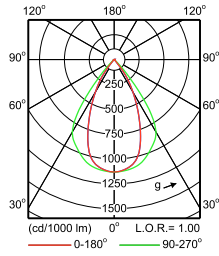
IFPS_4MX850 G3 581 1xLED66S/840 PSD NB-
 Polar Normal (separate)

IFPS_4MX850 G3 581 1xLED66S/830 PSD WB-
 Polar Normal (separate)

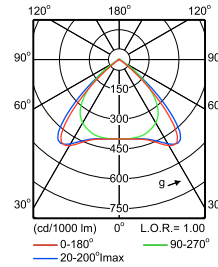
Polar Wide Diagrams



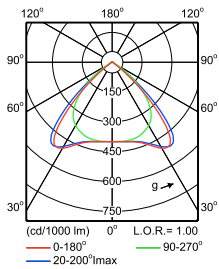
IFPS_4MX850 G3 491 1xLED55S/830 PSD NB-
Polar Normal (separate)



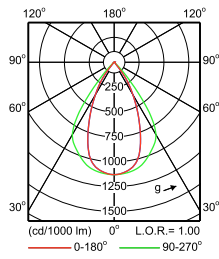
IFPS_4MX850 G3 491 1xLED80S/830 PSD NB-
Polar Normal (separate)



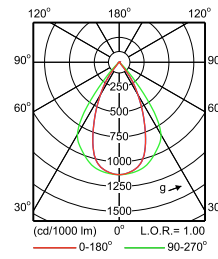
IFPS_4MX850 G3 491 1xLED40S/840 PSD WB-
Polar Normal (separate)



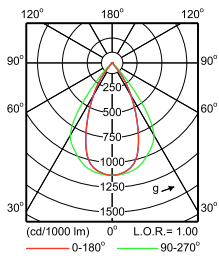
IFPS_4MX850 G3 491 1xLED55S/830 PSD WB-
Polar Normal (separate)



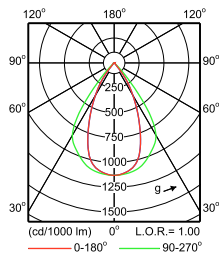
IFPS_4MX850 G3 581 1xLED40S/830 PSD NB-
Polar Normal (separate)



IFPS_4MX850 G3 581 1xLED40S/840 PSD NB-
Polar Normal (separate)



IFPS_4MX850 G3 581 1xLED55S/830 PSD NB-
Polar Normal (separate)



IFPS_4MX850 G3 581 1xLED55S/840 PSD NB-
Polar Normal (separate)

