



MSR Short Arc – for longer life

MSR Short Arc

The lamp's short arc and compact design helps enable a compact luminaire that provides high beam intensity, while the excellent color rendition characteristics help ensure optimal colors on stage. The highly innovative P3 technology, developed by Philips, allows MSR Short Arc lamps to be used at higher temperatures in any burning position. The result? Longer lifetime, fewer early failures and a highly consistent performance throughout the lamp's lifetime.

Benefits

- Enables use at higher temperatures in any burning position. Longer lifetime, fewer early failures, consistent performance over time
- High beam intensity
- Compact design luminaries
- Excellent color characteristics, optimal colors on stage

Features

- Philips Pinch Protection
- Short arc
- Compact lamp design
- MSR filling

Application

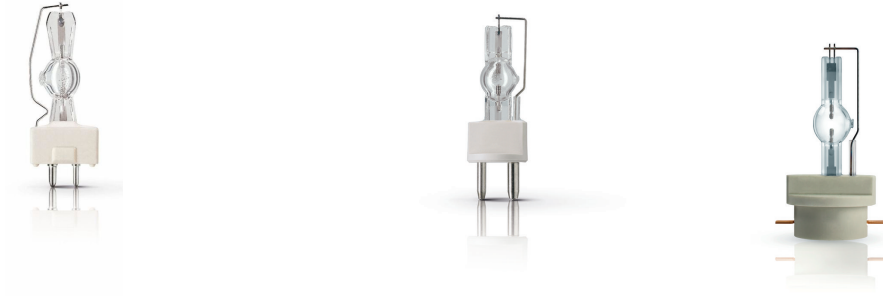
- Entertainment

Warnings and Safety

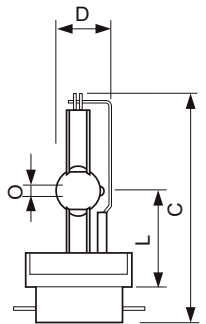
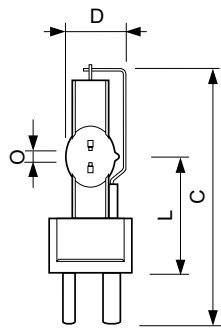
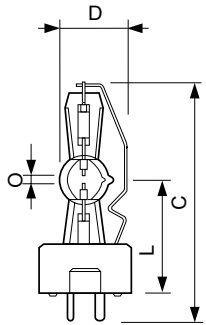
- A lamp breaking is extremely unlikely to have any impact on your health. If a lamp breaks, ventilate the room for 30 minutes and remove the parts, preferably with gloves. Put them in a sealed plastic bag and take it to your local waste facilities for recycling. Do not use a vacuum cleaner.

MSR Short Arc

Versions



Dimensional drawing



Product	D (max)	O	L (min)	L (max)	L	C (max)
MSR 700 SA 1CT/4	25 mm	4.0 mm	38 mm	40 mm	39 mm	83 mm
MSR 400 SA 1CT/40	23.5 mm	3.0 mm	36 mm	37 mm	36.5 mm	80 mm

Product	D (max)	O	L (min)	L (max)	L	C (max)
MSR 2000 SA 1CT/8	34 mm	7.0 mm	58 mm	60 mm	59 mm	135 mm
MSR 1200 SA 1CT/4	34 mm	7.0 mm	58 mm	60 mm	59 mm	135 mm

Product	D (max)	O	L (min)	L (max)	L	C (max)
MSR Gold 1200 SA/SE 1CT/3	26.1 mm	5.5 mm	44 mm	46 mm	45 mm	109 mm

MSR Short Arc

General Information

Life To 50% Failures (Nom)	750 h
Operating Position	UNIVERSAL

Light Technical

Colour Code	-
-------------	---

Controls and Dimming

Order Code	Full Product Name	Dimmable
92421300	MSR 400 SA 1CT/40	No
22802800	MSR 700 SA 1CT/4	No
22125800	MSR 1200 SA 1CT/4	No

Order Code	Full Product Name	Dimmable
91573000	MSR 2000 SA 1CT/8	Yes
92602600	MSR Gold 1200 SA/SE 1CT/3	Yes

Operating and Electrical

Order Code	Full Product Name	Lamp Current (Nom)	Power (Rated) (Nom)
92421300	MSR 400 SA 1CT/40	8.4 A	400 W
22802800	MSR 700 SA 1CT/4	11 A	700 W
22125800	MSR 1200 SA 1CT/4	13.8 A	1200 W

Order Code	Full Product Name	Lamp Current (Nom)	Power (Rated) (Nom)
91573000	MSR 2000 SA 1CT/8	21.5 A	2000 W
92602600	MSR Gold 1200 SA/SE 1CT/3	15 A	1200 W

General Information

Order Code	Full Product Name	Cap-Base	Main Application	System	
				Description	
92421300	MSR 400 SA 1CT/40	GY9.5	Studio/Disco	Short Arc	
22802800	MSR 700 SA 1CT/4	GY9.5	Studio/Disco	Short Arc	
22125800	MSR 1200 SA 1CT/4	GY22	Studio/Disco	Short Arc	

Order Code	Full Product Name	Cap-Base	Main Application	System	
				Description	
91573000	MSR 2000 SA 1CT/8	GY22	Studio/Disco	Short Arc	
92602600	MSR Gold 1200 SA/SE 1CT/3	PGJ50	Entertainment	SA/SE	

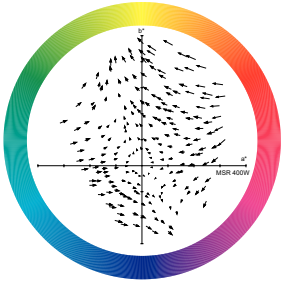
Light Technical

Order Code	Full Product Name	Correlated Colour	Colour Rendering		Luminous Flux (Min)	Luminous Flux (Nom)
		Temperature (Nom)	Index (Nom)	Luminous		
92421300	MSR 400 SA 1CT/40	5600 K	75		23500 lm	30000 lm
22802800	MSR 700 SA 1CT/4	5600 K	80		49500 lm	55000 lm
22125800	MSR 1200 SA 1CT/4	6100 K	80		86400 lm	96000 lm

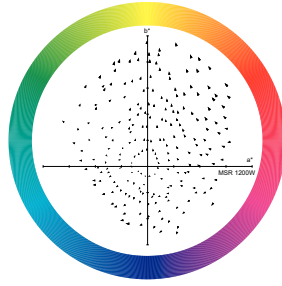
Order Code	Full Product Name	Correlated Colour	Colour Rendering		Luminous Flux (Min)	Luminous Flux (Nom)
		Temperature (Nom)	Index (Nom)	Luminous		
91573000	MSR 2000 SA 1CT/8	6000 K	89		164000 lm	174000 lm
92602600	MSR Gold 1200 SA/SE 1CT/3	6000 K	80		87000 lm	93000 lm

MSR Short Arc

Colour Rendering Diagrams



XDCR_XDMSR_400W-Colour Rendering Vector diagram



XDCR_XDMSR_1200W-Colour Rendering Vector diagram

