



ClearFlood Large – The best solution for 1:1 retrofit

ClearFlood Large

ClearFlood Large is designed to meet the requirements of a wide range of floodlighting applications. It also includes all the necessary control features and interfaces to make it future-proof and even more efficient. ClearFlood Large lets you choose the exact number of lumens you need for your application. Incorporating extremely high-efficiency optics and state-of-the-art LEDs, it is a highly competitive solution offering an outstanding lux/euro ratio and energy savings of up to 40% (without the use of additional controls). The wide choice of optics ensures maximum application coverage. ClearFlood Large is easy to install – you simply plug it in and select the best option for your needs. Perfect for replacing conventional technology and enabling intelligent lighting control while retaining the same electrical installation and poles.

Benefits

- Fast payback and low Total Cost of Ownership with energy savings and minimum maintenance costs
- Multiple control options ensure increased efficiency with intelligent lighting
- Combination of lenses and flux options ensures high level of project flexibility

ClearFlood Large

Features

- Designed for 1:1 retrofit up to 1000 W HID
- Wide range of lumen packages between 30 klm and 65 klm
- Gear and PCB easy to replace
- Wide range of control options, such as CityTouch Ready, CLO, DALI, 1-10 V
- LEDs and optics deliver highest level of efficiency
- Components are 100% Philips
- Wide choice of optics to suit all applications: 3x Asymmetrical, 3x Road, 3x Symmetrical, versions with louver (optional)
- Optimized architecture for 4 kV surge (optional 10 kV), IP66 and IK08 protection

Application

- Airports
- Harbors
- Large recreational sports facilities
- Industrial areas
- Roundabouts and motorway junctions

Specifications

Type	BVP651
Light source	Integral LED-module
Power	252-549 W depending on configuration
Luminous flux	35,000-65,000 lm
Luminaire efficacy	Neutral white: 104 to 122 lm/W Warm white: 91 to 108 lm/W
Correlated Color	3000, 4000 or 5700 K
Temperature	
Color Rendering Index	70
Useful life L80B10	>70,000 hours
Operating temperature range	-30 to +45 °C
Driver	Built-in (self ballasted LED-module)
Surge protection	4 kV (10 kV optional)
Power/Data supply	Philips Xitanium 300 W
Mains voltage	220-240 V AC / 50-60 Hz
Dimming	Constant light output (CLO) DALI dimming DynaDimmer CityTouch (OLC)

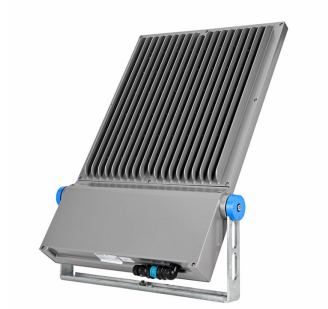
Controls system input	1-10 V or DALI
Optic	Symmetrical or asymmetrical Distribution road comfort, medium, wide or wet road
Material	Housing: die-cast aluminum Lenses: PMMA Cover: glass, flat
Color	Grey aluminium (RAL9007)
Connection	External connector with 5 poles (IP67)
Maintenance	From below by opening the housing with a single quick-release clip Serviceable in less than 5 min
Installation	Stirrup fixation Max adjustment from the horizontal: -170 to +170° Max vertical aiming: 0 to +360°
Accessories	Louver

ClearFlood Large

Versions



Product details



Universal bracket for mounting / tilting.



Side view



Memory cap.



External connector with 5 poles IP67.



Easy to plug in. No tooling required.

Approval and Application

Mech. impact protection code	IK08
Surge Protection (Common/Differential)	Luminaire surge protection level up to 4 kV differential mode and 4 kV common mode

Controls and Dimming

Dimmable	No
----------	----

General Information

CE mark	CE mark
Light source colour	740 neutral white
Optical cover/lens type	FG
Driver included	Yes
Flammability mark	F
Light source replaceable	Yes
Number of gear units	2 units
Product Family Code	BVP651

Initial Performance (IEC Compliant)

Init. Corr. Colour Temperature	4000 K
Init. Colour Rendering Index	70

Light Technical

Standard tilt angle side entry	0°
Standard tilt angle posttop	0°
Upward light output ratio	0

General Information

Order Code	Full Product Name	Luminaire light beam spread	Lamp family code	Optic type
10775800	BVP651 LED450-4S/740 S ALU PSU	70° x 21°	LED450	Symmetrical
10776500	BVP651 LED450-4S/740 OFA52 ALU PSU	39° - 11° x 98°	LED450	Optiflux asymmetrical axis angle 52°
10777200	BVP651 LED450-4S/740 DM10 ALU PSU	157° x 111°	LED450	Distribution medium 10
10778900	BVP651 LED450-4S/740 DW10 ALU PSU	52° - 7° x 151°	LED450	Distribution wide 10
10779600	BVP651 LED450-4S/740 DX10 ALU PSU	20° - 4° x 150°	LED450	Distribution extra-wide 10
10780200	BVP651 LED450-4S/740 DX50 ALU PSU	17° - 5° x 132°	LED450	Distribution extra wide 50
10781900	BVP651 LED450-4S/740 DX51 ALU PSU	14° - 5° x 132°	LED450	Distribution extra wide 51
10782600	BVP651 LED500-4S/740 S ALU PSU	70° x 21°	LED500	Symmetrical
10783300	BVP651 LED500-4S/740 OFA52 ALU PSU	39° - 11° x 98°	LED500	Optiflux asymmetrical axis angle 52°
10784000	BVP651 LED500-4S/740 DM10 ALU PSU	157° x 111°	LED500	Distribution medium 10
10785700	BVP651 LED500-4S/740 DW10 ALU PSU	52° - 7° x 151°	LED500	Distribution wide 10
10786400	BVP651 LED500-4S/740 DX10 ALU PSU	20° - 4° x 150°	LED500	Distribution extra-wide 10
10787100	BVP651 LED500-4S/740 DX50 ALU PSU	17° - 5° x 132°	LED500	Distribution extra wide 50
10788800	BVP651 LED500-4S/740 DX51 ALU PSU	14° - 5° x 132°	LED500	Distribution extra wide 51
10789500	BVP651 LED550-4S/740 S ALU PSU	70° x 21°	LED550	Symmetrical
10790100	BVP651 LED550-4S/740 OFA52 ALU PSU	39° - 11° x 98°	LED550	Optiflux asymmetrical axis angle 52°
10791800	BVP651 LED550-4S/740 DM10 ALU PSU	157° x 111°	LED550	Distribution medium 10
10792500	BVP651 LED550-4S/740 DW10 ALU PSU	52° - 7° x 151°	LED550	Distribution wide 10
10793200	BVP651 LED550-4S/740 DX10 ALU PSU	20° - 4° x 150°	LED550	Distribution extra-wide 10
10794900	BVP651 LED550-4S/740 DX50 ALU PSU	17° - 5° x 132°	LED550	Distribution extra wide 50
10795600	BVP651 LED550-4S/740 DX51 ALU PSU	14° - 5° x 132°	LED550	Distribution extra wide 51
10796300	BVP651 LED600-4S/740 S ALU PSU	70° x 21°	LED600	Symmetrical
10797000	BVP651 LED600-4S/740 OFA52 ALU PSU	39° - 11° x 98°	LED600	Optiflux asymmetrical axis angle 52°
10798700	BVP651 LED600-4S/740 DM10 ALU PSU	157° x 111°	LED600	Distribution medium 10

Order Code	Full Product Name	Luminaire light beam spread	Lamp family code	Optic type
10799400	BVP651 LED600-4S/740 DW10 ALU PSU	52° - 7° x 151°	LED600	Distribution wide 10
10800700	BVP651 LED600-4S/740 DX10 ALU PSU	20° - 4° x 150°	LED600	Distribution extra-wide 10
10801400	BVP651 LED600-4S/740 DX50 ALU PSU	17° - 5° x 132°	LED600	Distribution extra wide 50
10802100	BVP651 LED600-4S/740 DX51 ALU PSU	14° - 5° x 132°	LED600	Distribution extra wide 51
10803800	BVP651 LED650-4S/740 S ALU PSU	70° x 21°	LED650	Symmetrical
10804500	BVP651 LED650-4S/740 OFA52 ALU PSU	39° - 11° x 98°	LED650	Optiflux asymmetrical axis angle 52°
10805200	BVP651 LED650-4S/740 DM10 ALU PSU	157° x 111°	LED650	Distribution medium 10
10806900	BVP651 LED650-4S/740 DW10 ALU PSU	52° - 7° x 151°	LED650	Distribution wide 10
10807600	BVP651 LED650-4S/740 DX10 ALU PSU	20° - 4° x 150°	LED650	Distribution extra-wide 10
10808300	BVP651 LED650-4S/740 DX50 ALU PSU	17° - 5° x 132°	LED650	Distribution extra wide 50
10809000	BVP651 LED650-4S/740 DX51 ALU PSU	14° - 5° x 132°	LED650	Distribution extra wide 51
10810600	BVP651 LED700-4S/740 S ALU PSU	70° x 21°	LED700	Symmetrical
10811300	BVP651 LED700-4S/740 OFA52 ALU PSU	39° - 11° x 98°	LED700	Optiflux asymmetrical axis angle 52°
10812000	BVP651 LED700-4S/740 DM10 ALU PSU	157° x 111°	LED700	Distribution medium 10
10813700	BVP651 LED700-4S/740 DW10 ALU PSU	52° - 7° x 151°	LED700	Distribution wide 10
10814400	BVP651 LED700-4S/740 DX10 ALU PSU	20° - 4° x 150°	LED700	Distribution extra-wide 10
10815100	BVP651 LED700-4S/740 DX50 ALU PSU	17° - 5° x 132°	LED700	Distribution extra wide 50
10816800	BVP651 LED700-4S/740 DX51 ALU PSU	14° - 5° x 132°	LED700	Distribution extra wide 51
11281300	BVP651 LED750-4S/740 S ALU PSU	70° x 21°	LED750	Symmetrical
11282000	BVP651 LED750-4S/740 OFA52 ALU PSU	39° - 11° x 98°	LED750	Optiflux asymmetrical axis angle 52°
11283700	BVP651 LED750-4S/740 DM10 ALU PSU	157° x 111°	LED750	Distribution medium 10
11284400	BVP651 LED750-4S/740 DW10 ALU PSU	52° - 7° x 151°	LED750	Distribution wide 10
11285100	BVP651 LED750-4S/740 DX10 ALU PSU	20° - 4° x 150°	LED750	Distribution extra-wide 10
11286800	BVP651 LED750-4S/740 DX50 ALU PSU	17° - 5° x 132°	LED750	Distribution extra wide 50
11287500	BVP651 LED750-4S/740 DX51 ALU PSU	14° - 5° x 132°	LED750	Distribution extra wide 51

Initial Performance (IEC Compliant)

Order Code	Full Product Name	Initial luminous flux	Order Code	Full Product Name	Initial luminous flux
10775800	BVP651 LED450-4S/740 S ALU PSU	39150 lm	10800700	BVP651 LED600-4S/740 DX10 ALU PSU	48600 lm
10776500	BVP651 LED450-4S/740 OFA52 ALU PSU	38700 lm	10801400	BVP651 LED600-4S/740 DX50 ALU PSU	49200 lm
10777200	BVP651 LED450-4S/740 DM10 ALU PSU	38250 lm	10802100	BVP651 LED600-4S/740 DX51 ALU PSU	30000 lm
10778900	BVP651 LED450-4S/740 DW10 ALU PSU	38250 lm	10803800	BVP651 LED650-4S/740 S ALU PSU	56100 lm
10779600	BVP651 LED450-4S/740 DX10 ALU PSU	36900 lm	10804500	BVP651 LED650-4S/740 OFA52 ALU PSU	55440 lm
10780200	BVP651 LED450-4S/740 DX50 ALU PSU	37350 lm	10805200	BVP651 LED650-4S/740 DM10 ALU PSU	54780 lm
10781900	BVP651 LED450-4S/740 DX51 ALU PSU	22500 lm	10806900	BVP651 LED650-4S/740 DW10 ALU PSU	55440 lm
10782600	BVP651 LED500-4S/740 S ALU PSU	43000 lm	10807600	BVP651 LED650-4S/740 DX10 ALU PSU	52800 lm
10783300	BVP651 LED500-4S/740 OFA52 ALU PSU	42500 lm	10808300	BVP651 LED650-4S/740 DX50 ALU PSU	53460 lm
10784000	BVP651 LED500-4S/740 DM10 ALU PSU	42000 lm	10809000	BVP651 LED650-4S/740 DX51 ALU PSU	32340 lm
10785700	BVP651 LED500-4S/740 DW10 ALU PSU	42000 lm	10810600	BVP651 LED700-4S/740 S ALU PSU	59500 lm
10786400	BVP651 LED500-4S/740 DX10 ALU PSU	40500 lm	10811300	BVP651 LED700-4S/740 OFA52 ALU PSU	58800 lm
10787100	BVP651 LED500-4S/740 DX50 ALU PSU	41000 lm	10812000	BVP651 LED700-4S/740 DM10 ALU PSU	58100 lm
10788800	BVP651 LED500-4S/740 DX51 ALU PSU	25000 lm	10813700	BVP651 LED700-4S/740 DW10 ALU PSU	58800 lm
10789500	BVP651 LED550-4S/740 S ALU PSU	48160 lm	10814400	BVP651 LED700-4S/740 DX10 ALU PSU	56000 lm
10790100	BVP651 LED550-4S/740 OFA52 ALU PSU	47600 lm	10815100	BVP651 LED700-4S/740 DX50 ALU PSU	56700 lm
10791800	BVP651 LED550-4S/740 DM10 ALU PSU	47040 lm	10816800	BVP651 LED700-4S/740 DX51 ALU PSU	34300 lm
10792500	BVP651 LED550-4S/740 DW10 ALU PSU	47040 lm	11281300	BVP651 LED750-4S/740 S ALU PSU	63840 lm
10793200	BVP651 LED550-4S/740 DX10 ALU PSU	45360 lm	11282000	BVP651 LED750-4S/740 OFA52 ALU PSU	63080 lm
10794900	BVP651 LED550-4S/740 DX50 ALU PSU	45920 lm	11283700	BVP651 LED750-4S/740 DM10 ALU PSU	62320 lm
10795600	BVP651 LED550-4S/740 DX51 ALU PSU	28000 lm	11284400	BVP651 LED750-4S/740 DW10 ALU PSU	63080 lm
10796300	BVP651 LED600-4S/740 S ALU PSU	51600 lm	11285100	BVP651 LED750-4S/740 DX10 ALU PSU	60040 lm
10797000	BVP651 LED600-4S/740 OFA52 ALU PSU	51000 lm	11286800	BVP651 LED750-4S/740 DX50 ALU PSU	60800 lm
10798700	BVP651 LED600-4S/740 DM10 ALU PSU	50400 lm	11287500	BVP651 LED750-4S/740 DX51 ALU PSU	37240 lm
10799400	BVP651 LED600-4S/740 DW10 ALU PSU	50400 lm			

Mechanical and Housing

Order Code	Full Product Name	Colour	Order Code	Full Product Name	Colour
10775800	BVP651 LED450-4S/740 S ALU PSU	Gray	10796300	BVP651 LED600-4S/740 S ALU PSU	Gray
10776500	BVP651 LED450-4S/740 OFA52 ALU PSU	Gray	10797000	BVP651 LED600-4S/740 OFA52 ALU PSU	Gray
10777200	BVP651 LED450-4S/740 DM10 ALU PSU	Gray	10798700	BVP651 LED600-4S/740 DM10 ALU PSU	Gray
10778900	BVP651 LED450-4S/740 DW10 ALU PSU	Gray	10799400	BVP651 LED600-4S/740 DW10 ALU PSU	Gray
10779600	BVP651 LED450-4S/740 DX10 ALU PSU	Gray	10800700	BVP651 LED600-4S/740 DX10 ALU PSU	Gray
10780200	BVP651 LED450-4S/740 DX50 ALU PSU	Gray	10801400	BVP651 LED600-4S/740 DX50 ALU PSU	Gray
10781900	BVP651 LED450-4S/740 DX51 ALU PSU	Gray	10802100	BVP651 LED600-4S/740 DX51 ALU PSU	Gray
10782600	BVP651 LED500-4S/740 S ALU PSU	Gray	10803800	BVP651 LED650-4S/740 S ALU PSU	Gray
10783300	BVP651 LED500-4S/740 OFA52 ALU PSU	Gray	10804500	BVP651 LED650-4S/740 OFA52 ALU PSU	Gray
10784000	BVP651 LED500-4S/740 DM10 ALU PSU	Gray	10805200	BVP651 LED650-4S/740 DM10 ALU PSU	Gray
10785700	BVP651 LED500-4S/740 DW10 ALU PSU	Gray	10806900	BVP651 LED650-4S/740 DW10 ALU PSU	Gray
10786400	BVP651 LED500-4S/740 DX10 ALU PSU	Gray	10807600	BVP651 LED650-4S/740 DX10 ALU PSU	Gray
10787100	BVP651 LED500-4S/740 DX50 ALU PSU	Gray	10808300	BVP651 LED650-4S/740 DX50 ALU PSU	Gray
10788800	BVP651 LED500-4S/740 DX51 ALU PSU	Gray	10809000	BVP651 LED650-4S/740 DX51 ALU PSU	Gray
10789500	BVP651 LED550-4S/740 S ALU PSU	Gray	10810600	BVP651 LED700-4S/740 S ALU PSU	Gray
10790100	BVP651 LED550-4S/740 OFA52 ALU PSU	Gray	10811300	BVP651 LED700-4S/740 OFA52 ALU PSU	Gray
10791800	BVP651 LED550-4S/740 DM10 ALU PSU	Gray	10812000	BVP651 LED700-4S/740 DM10 ALU PSU	Gray
10792500	BVP651 LED550-4S/740 DW10 ALU PSU	Gray	10813700	BVP651 LED700-4S/740 DW10 ALU PSU	Gray
10793200	BVP651 LED550-4S/740 DX10 ALU PSU	Gray	10814400	BVP651 LED700-4S/740 DX10 ALU PSU	Gray
10794900	BVP651 LED550-4S/740 DX50 ALU PSU	Gray	10815100	BVP651 LED700-4S/740 DX50 ALU PSU	Gray
10795600	BVP651 LED550-4S/740 DX51 ALU PSU	Gray	10816800	BVP651 LED700-4S/740 DX51 ALU PSU	Gray

ClearFlood Large

Order Code	Full Product Name	Colour
11281300	BVP651 LED750-4S/740 S ALU PSU	Gray
11282000	BVP651 LED750-4S/740 OFA52 ALU PSU	Gray
11283700	BVP651 LED750-4S/740 DM10 ALU PSU	Gray
11284400	BVP651 LED750-4S/740 DW10 ALU PSU	Gray

Order Code	Full Product Name	Colour
11285100	BVP651 LED750-4S/740 DX10 ALU PSU	Gray
11286800	BVP651 LED750-4S/740 DX50 ALU PSU	Aluminum
11287500	BVP651 LED750-4S/740 DX51 ALU PSU	Gray

