



# Product Description

## Plusline Compact

Mains-voltage linear lamp giving white halogen light

### Benefits

- Bright halogen light
- Long lifetime

### Features

- Clear tubular quartz bulb
- Reinforced filament supports for maximum safety and shock resistance resulting in longer lifetime
- Two arc-preventing fuses for greater safety
- Excellent colour rendering
- Constant light output during life

### Application

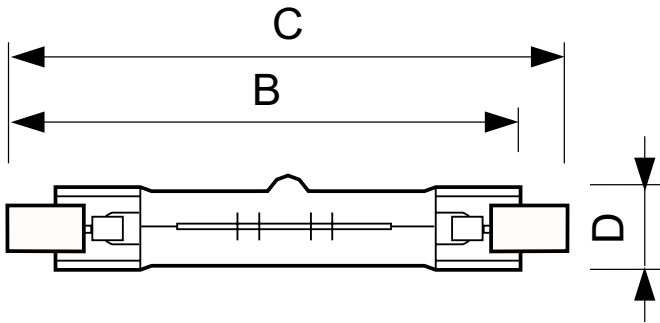
- Typically used in shop lighting applications
- Indoor: homes, offices, shops and museums
- Outdoor: billboards, car parks, security lighting and construction sites

### Versions



# Plusline Compact

## Dimensional drawing



| Product                             | D (max) | B (max) | B       | B (min) | C (max) |
|-------------------------------------|---------|---------|---------|---------|---------|
| Plusline C 150W R7s 230V 1CT/10X10F | 15 mm   | 76.5 mm | 74.9 mm | 73.3 mm | 78.3 mm |
| Plusline C 100W R7s 240V 1BC/10     | 15 mm   | 76.5 mm | 74.9 mm | 73.3 mm | 78.3 mm |

### Approval and Application

|                               |   |
|-------------------------------|---|
| Energy Efficiency Label (EEL) | D |
|-------------------------------|---|

### Controls and Dimming

|          |     |
|----------|-----|
| Dimmable | Yes |
|----------|-----|

### Operating and Electrical

|                     |       |
|---------------------|-------|
| Starting Time (Nom) | 0.0 s |
|---------------------|-------|

### General Information

|                        |           |
|------------------------|-----------|
| Cap-Base               | R7S       |
| Nominal Lifetime (Nom) | 2000 h    |
| Operating Position     | UNIVERSAL |
| Rated Lifetime (Hours) | 2000 h    |

### Luminaire Design Requirements

|                        |        |
|------------------------|--------|
| Bulb Temperature (Max) | 900 °C |
|------------------------|--------|

### Light Technical

|                              |     |
|------------------------------|-----|
| Colour Rendering Index (Nom) | 100 |
|------------------------------|-----|

### Mechanical and Housing

|             |       |
|-------------|-------|
| Bulb Finish | Clear |
| Bulb Shape  | T3    |

## Operating and Electrical

| Order Code | Full Product Name                   | Lamp Current (Nom) | Voltage (Nom) | Power (Rated) |
|------------|-------------------------------------|--------------------|---------------|---------------|
| 80887200   | Plusline C 150W R7s 230V 1CT/10X10F | 0.65 A             | 230 V         | 150 W         |
| 90173625   | Plusline C 100W R7s 240V 1BC/10     | 0.42 A             | 240 V         | 100 W         |

## Light Technical

| Order Code | Full Product Name                   | Luminous Efficacy (rated) (Nom) | Luminous Flux (Nom) |
|------------|-------------------------------------|---------------------------------|---------------------|
| 80887200   | Plusline C 150W R7s 230V 1CT/10X10F | 16 lm/W                         | 2400 lm             |

| Order Code | Full Product Name               | Luminous Efficacy (rated) (Nom) | Luminous Flux (Nom) |
|------------|---------------------------------|---------------------------------|---------------------|
| 90173625   | Plusline C 100W R7s 240V 1BC/10 | 15.5 lm/W                       | 1550 lm             |

## Plusline Compact

