



# A simple and flexible solution to designing modern light lines in professional and retail spaces

## PlainView, recessed

Light line solutions are always in fashion. therefore we know that delivering innovation in this field is crucial. PlainView is a modern-looking, neat luminaire offering comfortable, good-quality lighting, which can also work as a design element. The luminaires offer high-quality specifications and flexibility with different options for lumen packages. Thanks to these features and benefits, PlainView delivers ideal lighting in the non-working areas of professional spaces such as offices, educational institutes and also the welcoming areas and entrances of retail spaces.

### Benefits

- Clean and uniform light
- Multiple application use
- Easy to install and maintain
- A long-lasting, reliable luminaire

## PlainView, recessed

### Features

- Homogeneous exit window
- Can create standalone and continuous lines of light and offers recessed and suspended variants
- The same modules are used for standalone and continuous light lines, providing flexibility and making installation easier
- Delivers Philips quality

### Application

- Office – circulation and common areas
- Education – circulation and common areas
- Retail – general lighting in shops
- Healthcare – circulation and common areas

### Specifications

<b>Ambient Temperature</b>	+10 to +40 °C
<b>Main colour of the luminaire</b>	White
<b>Dimming</b>	No, yes
<b>Driver</b>	Power supply unit with DALI interface (PSD) Power supply unit (PSU)
<b>Initial correlated colour temperature</b>	4000 K
<b>Initial input power</b>	40 W, 50 W
<b>Initial LED luminaire efficacy</b>	90, 95 lm/W

<b>Initial luminous flux</b>	3800, 4800 lm
<b>Input frequency</b>	50 to 60 Hz
<b>Input voltage</b>	220 to 240 V
<b>Inrush current (A)</b>	19, 22 A
<b>Light source colour</b>	840 neutral white
<b>Light source replaceable</b>	No
<b>Material</b>	Housing: aluminum
<b>Material</b>	Reflector: -
<b>Warranty period</b>	5 years

### Versions



# PlainView, recessed

## Product details

PlainView\_Recessed-  
RC140B-1DPP.tif



PlainView\_Recessed-  
RC140B-2DPP.tif



PlainView\_Recessed-  
RC140B-3DPP.tif



PlainView\_Recessed-  
RC140B-4DPP.tif



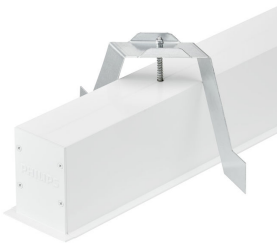
PlainView\_Recessed-  
RC140B-5DPP.tif



PlainView\_Recessed-  
RC140B-6DPP.tif



PlainView\_Recessed-  
RC140B-7DPP.tif



PlainView\_Recessed-  
RC140B-8DPP.tif



# PlainView, recessed

## Product details

PlainView\_Recessed-  
RC140B-9DPP.tif



### Application Conditions

Ambient temperature range	+10 to +40 °C
Suitable for random switching	Yes

### Approval and Application

Mech. impact protection code	IK02
Ingress protection code	IP40

### Operating and Electrical

Input Voltage	220 to 240 V
---------------	--------------

### General Information

CE mark	CE mark
Protection class IEC	Safety class I (I)
Driver included	Yes
ENEC mark	-
Flammability mark	F
Glow-wire test	650/30
Light source replaceable	No
Number of gear units	1 unit
Optic type	No

### Initial Performance (IEC Compliant)

Initial chromaticity	(0.38, 0.38) SDCM <3
Init. Corr. Colour Temperature	4000 K
Init. Colour rendering index	≥80
Luminous flux tolerance	+/-10%

### Mechanical and Housing

Colour	White
--------	-------

### Application Conditions

Order Code	Full Product Name	Maximum dimming level
38023699	RC140B LED38S/840 PSD PCV PI5 L1150	1%
38024399	RC140B LED38S/840 PSU PCV PI3 L1150	-
38027499	RC140B LED48S/840 PSD PCV PI5 L1430	1%
38028199	RC140B LED48S/840 PSU PCV PI3 L1430	-

## Controls and Dimming

Order Code	Full Product Name	Dimmable	Order Code	Full Product Name	Dimmable
38023699	RC140B LED38S/840 PSD PCV PI5 L1150	Yes	38027499	RC140B LED48S/840 PSD PCV PI5 L1430	Yes
38024399	RC140B LED38S/840 PSU PCV PI3 L1150	No	38028199	RC140B LED48S/840 PSU PCV PI3 L1430	No

## Initial Performance (IEC Compliant)

## PlainView, recessed

Order Code	Full Product Name	Initial LED luminaire efficacy	Initial luminous flux	Initial input power
38023699	RC140B LED38S/840 PSD PCV PI5 L1150	90 lm/W	3800 lm	40 W
38024399	RC140B LED38S/840 PSU PCV PI3 L1150	90 lm/W	3800 lm	40 W

Order Code	Full Product Name	Initial LED luminaire efficacy	Initial luminous flux	Initial input power
38027499	RC140B LED48S/840 PSD PCV PI5 L1430	95 lm/W	4800 lm	50 W
38028199	RC140B LED48S/840 PSU PCV PI3 L1430	95 lm/W	4800 lm	50 W

