



The best LED solution for Post-Top High-Intensity Discharge (HID) lamp replacement with low initial investment

TrueForce LED Public Mains

Philips TrueForce LED lamps provide an easy LED solution with a fast payback to replace High-Intensity Discharge (HID) lamps in Post-Top applications. These lamps bring the energy-efficiency and long lifetime benefits of LED to HID replacement, with a low initial investment delivering instant savings. With the right lamp size and light distribution, customers can easily retrofit TrueForce LED lamps into their existing system, thereby enhancing the light quality without having to change the fixtures or sacrifice the light effect.

Benefits

- Up to 50% energy saving compared with conventional HID systems
- A direct lamp replacement solution without changing the fixture: cost saving with quick payback
- Lower maintenance costs

TrueForce LED Public Mains

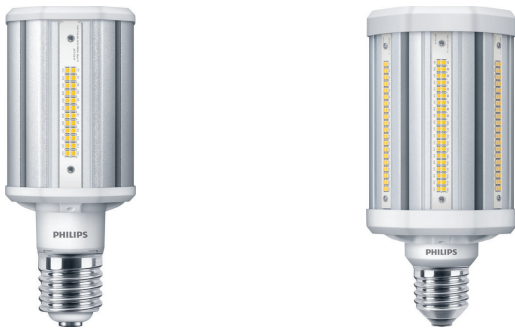
Features

- Direct mains solution: 110–277 V
- Long lifetime of 50,000 hrs
- High lumen output, instant on, no flicker, right lamp size and lighting distribution for direct retrofit
- Surge Protection and OTP (over-temperature protection)

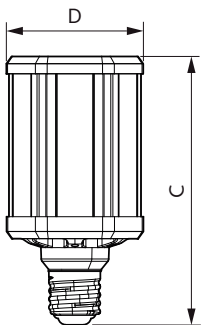
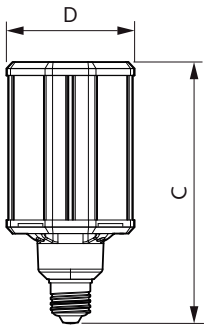
Application

- Public urban – parks, squares
- Public road – streets, paths
- Public area – parking, transportation hubs

Versions



Dimensional drawing



Product	D	C
35ED23.5/LED/740/ND 120–277V E40 G2 4/1	84 mm	195 mm
35ED23.5/LED/727/ND 120–277V E40 G2 4/1	84 mm	195 mm

Product	D	C
55ED28/LED/740/ND 120–277V E40 G2 4/1	105 mm	211 mm
55ED28/LED/727/ND 120–277V E40 G2 4/1	105 mm	211 mm

TrueForce LED Public Mains

Approval and Application

Energy Consumption kWh/1000 h	- kWh
Energy Efficiency Label (EEL)	Not applicable

Controls and Dimming

Dimmable	No
----------	----

Operating and Electrical

Input Frequency	50 to 60 Hz
Voltage (Nom)	120-277 V
Starting Time (Nom)	0.5 s

General Information

Cap-Base	E40
Nominal Lifetime (Nom)	50000 h
Switching Cycle	50,000X

Light Technical

Beam Angle (Nom)	360 °
Colour Rendering Index (Nom)	70
Llmf At End Of Nominal Lifetime (Nom)	70 %

Mechanical and Housing

Bulb Finish	Clear
Bulb Shape	Others

Operating and Electrical

Order Code	Full Product Name	Wattage Equivalent	Power (Rated) (Nom)
77227000	35ED23.5/LED/727/ND 120-277V E40 G2 4/1	100 W	35 W
77231700	35ED23.5/LED/740/ND 120-277V E40 G2 4/1	100 W	35 W
77233100	55ED28/LED/727/ND 120-277V E40 G2 4/1	150 W	55 W
77235500	55ED28/LED/740/ND 120-277V E40 G2 4/1	150 W	55 W

Light Technical

Order Code	Full Product Name	Correlated Colour		
		Colour Code	Temperature (Nom)	Luminous Flux (Nom)
77227000	35ED23.5/LED/727/ND 120-277V E40 G2 4/1	727	2700 K	4800 lm
77231700	35ED23.5/LED/740/ND 120-277V E40 G2 4/1	740	4000 K	5000 lm

Order Code	Full Product Name	Correlated Colour		
		Colour Code	Temperature (Nom)	Luminous Flux (Nom)
77233100	55ED28/LED/727/ND 120-277V E40 G2 4/1	727	2700 K	7500 lm
77235500	55ED28/LED/740/ND 120-277V E40 G2 4/1	740	4000 K	8000 lm

Temperature

Order Code	Full Product Name	T-Case Maximum (Nom)
77227000	35ED23.5/LED/727/ND 120-277V E40 G2 4/1	70 °C
77231700	35ED23.5/LED/740/ND 120-277V E40 G2 4/1	70 °C

Order Code	Full Product Name	T-Case Maximum (Nom)
77233100	55ED28/LED/727/ND 120-277V E40 G2 4/1	80 °C
77235500	55ED28/LED/740/ND 120-277V E40 G2 4/1	80 °C

TrueForce LED Public Mains

