



# ZXP399 DMX Controls and Accessories

## ZXP399 Jump 4P DMX cable 2m (10 pcs)

Black

The ZXP399 DMX Controls and Wiring Accessories are to be used with our architectural and facade lighting luminaires (UniFlood C, M and G, UniStrip G4, UniEdge, UniDot G2, UniString and UniBar).;DMX Controls include a main controller, stand-alone controller, sub-controllers, DMX amplifier and DMX addressing device.;Main Controller: Industrial computer that can control up to 6,000 DMX universes.;Stand-alone Controller: Fits all medium applications with up to 700 DMX universes.;Wiring accessories include leader and jump cables with male and female IP67 connectors and end-caps.;Addressing Device: Hand-held device that can write DMX addresses to a whole run on-site within minutes.;DMX Amplifier: Compact, IP65 and low-power repeater that can amplify the DMX signal for up 100 metres.

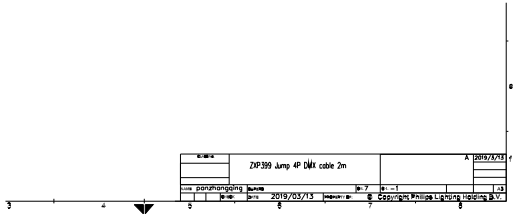
### Product data

General Information	
Accessory colour	Black
Mechanical and Housing	
Overall length	2000 mm
Dimensions (height x width x depth)	NaN x NaN x 2000 mm (NaN x NaN x 78.7 in)
Product Data	
Full product code	911401742342

Order product name	ZXP399 Jump 4P DMX cable 2m (10 pcs)
Order code	01742342
Numerator – quantity per pack	1
SAP numerator – packs per outer box	1
Material no. (12 NC)	911401742342
Net Weight (Piece)	2.050 kg

# ZXP399 DMX Controls and Accessories

## Dimensional drawing



ZXP399

