



PrimaVision Twin for CDM

HID-PV C 2x35 /S CDM 220-240V 50/60Hz

Dual CDM lamp operation, single HID electronic gear – improves cost effectiveness and increases luminaire design flexibility

Product data

General Information		Power losses (nom.)	
Application code	Int. Earth Loop		8 W
Design	-	Inrush current peak (max.)	33 A
Lamp type	CDM	Wiring	
Number of lamps	2 piece/unit	Cable capacity output wires mutual (nom.)	120 pF
Suitable for outdoor use	No	Wire strip length	10.0-11.0 mm
Number of products on MCB (16 A type B) (nom.)	14	Ballast contact wire cross section	0.50-2.50 mm ²
Automatic restart	Yes	Connector type	Insert
Operating and Electrical		System characteristics	
Input Voltage	220 to 240 V	Rated ballast-lamp power	35 W
Input frequency	50 to 60 Hz	Temperature	
Operating frequency (nom.)	0.14 kHz	T-ambient (max.)	55 °C
Power factor 100% load (nom.)	0.95	T-ambient (min.)	-20 °C
Ignition voltage (max.)	4.5 kV	T storage (max.)	80 °C
Ignition switch-off time (nom.)	20 min	T storage (min.)	-25 °C
Mains voltage performance (AC)	-10% - +6%	T-case lifetime (nom.)	70 °C
Mains voltage safety (AC)	-18% - +10%	T-Case maximum (max.)	80 °C
Earth leakage current (max.)	0.5 mA		
Inrush current width	0.5 ms		
Constant wattage deviation	-3% / +3%		

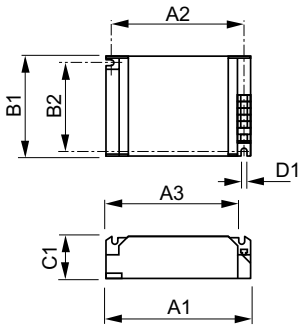
PrimaVision Twin for CDM

Mechanical and Housing	
Housing	/S

Approval and Application	
Active temperature protection	Yes
EMI 9 kHz ... 300 MHz	CISPR 15 ed 7.2
Vibration standard	IEC68-2-6 F c
Bumps standard	IEC 68-2-29 Eb
Approval marks	F-Marking CE marking ENEC certificate CB Certificate
Humming and noise level	Inaudible

Product Data	
Full product code	872790089572800
Order product name	HID-PV C 2x35 /S CDM 220-240V 50/60Hz
EAN/UPC – product	8711500881892
Order code	89572800
SAP numerator – quantity per pack	1
SAP numerator – packs per outer box	12
Material no. (12 NC)	913700656866
SAP net weight (piece)	0.271 kg

Dimensional drawing



HID-PV C 2x35 /S CDM 220-240V 50/60Hz

Product
HID-PV C 2x35 /S CDM 220-240V 50/60Hz

