



# PrimaVision Mini for CDM

## HID PV m 50 /S CDM HPF 220-240V 50/60Hz

Miniature HID electronic gear for PGJ5 CDM lamps – freeing up the boundaries of creativity and innovation in luminaire design

### Product data

General Information	
Application code	HPF
Type version	mk2
Lamp type	CDM
Number of lamps	1 piece/unit
Suitable for outdoor use	No
Number of products on MCB (16 A type B) (nom.)	24

Operating and Electrical	
Input Voltage	220 to 240 V
Input frequency	50 to 60 Hz
Minimum mains voltage operation (min.)	198 V
Ignition voltage (max.)	4.5 kV
Ignition voltage (min.)	3.0 kV
Ignition switch-off time (nom.)	25 min
Mains voltage performance (AC)	-10% - +6%
Mains voltage safety (AC)	-18% - +10%
Earth leakage current (max.)	0.25 mA
Inrush current width	0.40 ms
Constant wattage deviation	-3% / +3%
Power losses (nom.)	6 W

Inrush current peak (max.)	25 A
Wiring	
Cable capacity output wires mutual (nom.)	50 pF
Cable length from device to lamp	0.5 m
Wire strip length	8.5-9.5 mm
Ballast contact wire cross section	0.75-1.50 mm <sup>2</sup>
Connector type	Insert

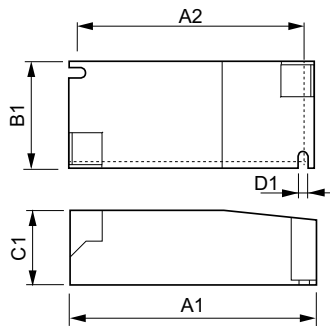
System characteristics	
Rated ballast-lamp power	50 W
Temperature	
T-ambient (max.)	50 °C
T-ambient (min.)	-20 °C
T storage (max.)	80 °C
T storage (min.)	-25 °C
T-case lifetime (nom.)	75 °C
T-Case maximum (max.)	80 °C

## PrimaVision Mini for CDM

Mechanical and Housing	
Housing	/S
Approval and Application	
Active temperature protection	Yes
EMI 9 kHz ... 300 MHz	CISPR 15 ed 7.2
Vibration standard	IEC68-2-6 F c
Bumps standard	IEC 68-2-29 Eb
Approval marks	F-Marking CE marking ENEC certificate VDE certificate
Humming and noise level	Inaudible

Product Data	
Full product code	871829111573100
Order product name	HID-PV m 50 /S CDM HPF 220-240V 50/60Hz
EAN/UPC – product	8718291115731
Order code	11573100
Numerator – quantity per pack	1
SAP numerator – packs per outer box	12
Material no. (12 NC)	913700665966
Net Weight (Piece)	0.150 kg

### Dimensional drawing



HID-PV m 50 /S CDM HPF 220-240V 50/60Hz

Product	D1	C1	A1	A2	B1
HID-PV m 50 /S CDM HPF 220-240V 50/60Hz	4.2 mm	30.2 mm	97.3 mm	88.3 mm	43.3 mm

