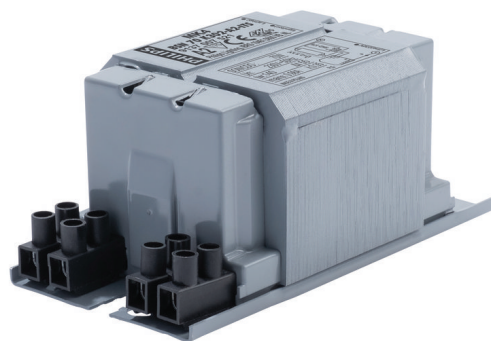


PHILIPS

Lighting



HID-Basic BSN/BMH MK4 semi-parallel for SON/CDO/CDM/MH/ HPI

BSN 70 K302-A2-ITS 230V 50Hz

Impregnated electromagnetic copper ballasts for use with an external semi-parallel ignitor for CDM, CDO, MH, HPI (Plus) and SON lamps

Product data

General Information		Power losses (nom.)	
Application code	K302-A2-ITS		11.7 W
Design	BC1-118	Wiring	
Lamp type	SON/CDO	Wire strip length	6.0 mm
Number of lamps	1 piece/unit	Ballast contact wire cross section	2.5 mm ²
		Connector type	Screw
Operating and Electrical		System characteristics	
Input Voltage	230 V	Capacitor	12µF/250V
Input frequency	50 Hz	Rated ballast-lamp power	70 W
Power factor 100% load (nom.)	0.85	Recommended ignitor	for SON/CDO/CDM lamps ignitor SKD 578 (913700655366) or series digital SUD10 (913700195891)
Mains voltage performance (AC)	-8%+6%	Temperature	
Mains voltage safety (AC)	-10%+10%	T storage (max.)	130 °C
Input current with PF correction	0.45 A	T storage (min.)	-30 °C
Input current without PF Correction	0.98 A		
Power factor without PF compensation (nom.)	0.35		

HID-Basic BSN/BMH MK4 semi-parallel for SON/CDO/CDM/MH/HPI

T-winding (max.)	140 °C
Delta-T normal conditions	55 °C

Approval and Application

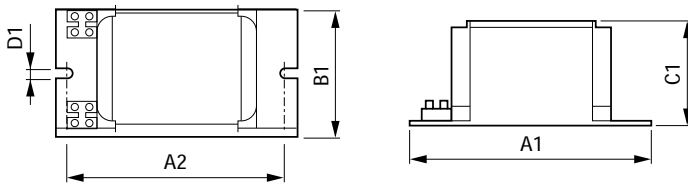
Active temperature protection	Yes
Approval marks	CE marking ENEC certificate

Product Data

Full product code	871869674082800
-------------------	-----------------

Order product name	BSN 70 K302-A2-ITS 230V 50Hz
EAN/UPC – product	8718696740828
Order code	74082800
SAP numerator – quantity per pack	1
SAP numerator – packs per outer box	6
Material no. (12 NC)	913700752126
SAP net weight (piece)	1.260 kg

Dimensional drawing



Product	A1	A2	B1	C1	D1
BSN 70 K302-A2-ITS 230V 50Hz	118 mm	94 mm	61 mm	52 mm	6.2 mm

BSN 70 K302-A2-ITS 230V 50Hz

