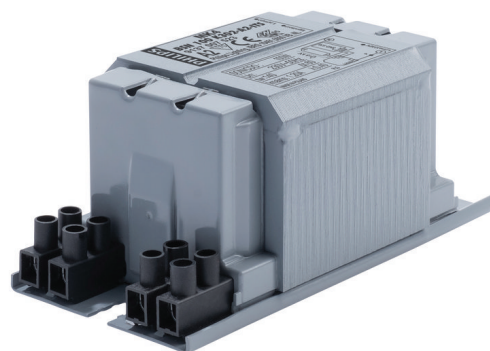


PHILIPS

Lighting



HID-Basic BSN/BMH MK4 semi-parallel for SON/CDO/CDM/MH/ HPI

BSN 100 K302-A2-ITS 230V 50Hz

Impregnated electromagnetic copper ballasts for use with an external semi-parallel ignitor for CDM, CDO, MH, HPI (Plus) and SON lamps

Product data

General Information	
Application code	K302-A2-ITS
Design	BC1-123
Lamp type	SON/CDO
Number of lamps	1 piece/unit

Operating and Electrical	
Input Voltage	230 V
Input frequency	50 Hz
Power factor 100% load (nom.)	0.85
Mains voltage performance (AC)	-8%~+6%
Mains voltage safety (AC)	-10%~+10%
Input current with PF correction	0.6 A
Input current without PF Correction	1.2 A
Power factor without PF compensation (nom.)	0.4

Power losses (nom.)	13.7 W
---------------------	--------

Wiring	
Wire strip length	6.0 mm
Ballast contact wire cross section	2.5 mm ²
Connector type	Screw

System characteristics	
Rated ballast-lamp power	100 W
Recommended ignitor	for SON/CDO/CDM lamps ignitor SKD 578 (913700655366) or series digital SUD40 (913700193591) only CDM

Temperature	
T storage (max.)	130 °C
T storage (min.)	-30 °C
T-winding (max.)	140 °C

HID-Basic BSN/BMH MK4 semi-parallel for SON/CDO/CDM/MH/HPI

Delta-T normal conditions	60 °C
---------------------------	-------

Approval and Application

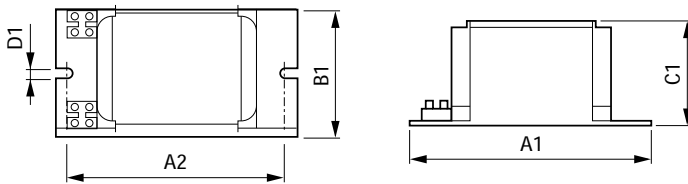
Active temperature protection	Yes
Approval marks	CE marking ENEC certificate

Product Data

Full product code	871869674086600
Order product name	BSN 100 K302-A2-ITS 230V 50Hz

EAN/UPC – product	8718696740866
Order code	74086600
SAP numerator – quantity per pack	1
Numerator – packs per outer box	6
Material no. (12 NC)	913700752326
SAP net weight (piece)	1.400 kg

Dimensional drawing



Product	A1	A2	B1	C1	D1
BSN 100 K302-A2-ITS 230V 50Hz	123 mm	98 mm	61 mm	52 mm	6.2 mm

BSN 100 K302-A2-ITS 230V 50Hz

