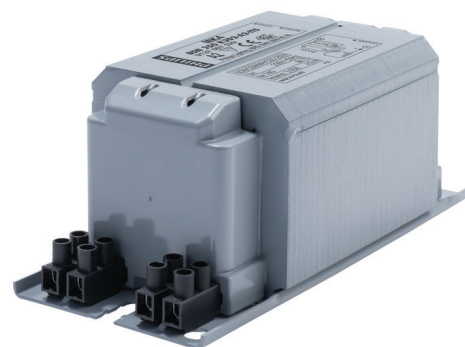


PHILIPS

Lighting



HID-Basic BSN/BMH MK4 semi-parallel for SON/CDO/CDM/MH/ HPI

BSN 250 K302-A2-ITS 230V 50Hz

Impregnated electromagnetic copper ballasts for use with an external semi-parallel ignitor for CDM, CDO, MH, HPI (Plus) and SON lamps

Product data

General Information

Application code	K302-A2-ITS
Design	BC2-160
Lamp type	SON/MH/CDM/CDO
Number of lamps	1 piece/unit

Operating and Electrical

Input Voltage	230 V
Input frequency	50 Hz
Power factor 100% load (nom.)	0.85
Mains voltage performance (AC)	-8%~+6%
Mains voltage safety (AC)	-10%~+10%
Input current with PF correction	1.4 A
Input current without PF Correction	3 A
Power factor without PF compensation (nom.)	0.4
Power losses (nom.)	26.1 W

Wiring

Wire strip length	6.0 mm
Ballast contact wire cross section	2.5 mm ²
Connector type	Screw

System characteristics

Capacitor	32µF/250V
Rated ballast-lamp power	250 W
Recommended ignitor	for SON/CDO/CDM lamps ignitor SKD 578 (913700655366)

Temperature

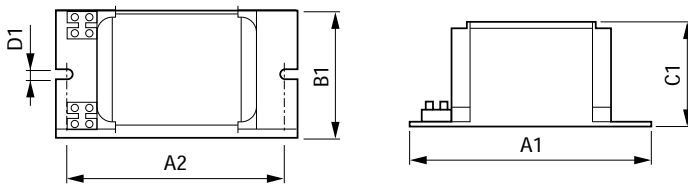
T storage (max.)	130 °C
T storage (min.)	-30 °C
T-winding (max.)	140 °C
Delta-T normal conditions	70 °C

HID-Basic BSN/BMH MK4 semi-parallel for SON/CDO/CDM/MH/HPI

Approval and Application	
Active temperature protection	Yes
Approval marks	CE marking ENEC certificate
Product Data	
Full product code	871869674102300
Order product name	BSN 250 K302-A2-ITS 230V 50Hz
EAN/UPC – product	8718696741023

Order code	74102300
SAP numerator – quantity per pack	1
SAP numerator – packs per outer box	6
Material no. (12 NC)	913700752926
SAP net weight (piece)	3.250 kg

Dimensional drawing



Product	A1	A2	B1	C1	D1
BSN 250 K302-A2-ITS 230V 50Hz	160 mm	139 mm	76 mm	65 mm	6.2 mm

BSN 250 K302-A2-ITS 230V 50Hz

