



# MASTER LEDtube EM/ Mains

## MASTER LEDtube 900mm HO 12W 865 T8

The Philips MASTER LEDtube integrates a LED light source into a traditional fluorescent form factor. Its unique design creates a perfectly uniform visual appearance which cannot be distinguished from traditional fluorescent. For those that are looking for value for money within limited budget and re-lamping efforts for better light effect and lifetime.

### Warnings and Safety

• -

### Product data

| General Information                 |  |
|-------------------------------------|--|
| Cap base                            | G13 ROT (Rotating) [ Medium Bi-Pin<br>Fluorescent] |
| EU RoHS compliant                   | Yes  |
| Nominal lifetime (nom.)             | 50000 h  |
| Switching cycle                     | 200,000X   |
| Light Technical                     |  |
| Colour Code                         | 865 [ CCT of 6,500 K]                              |
| Beam Angle (Nom)                    | 160 °  |
| Luminous flux (nom.)                | 1575 lm  |
| Colour designation                  | Cool Daylight                                      |
| Correlated Colour Temperature (Nom) | 6500 K   |
| Luminous efficacy (rated) (nom.)    | 131.00 lm/W  |
| Colour consistency                  | <6   |
| Colour rendering index (nom.)       | 83   |

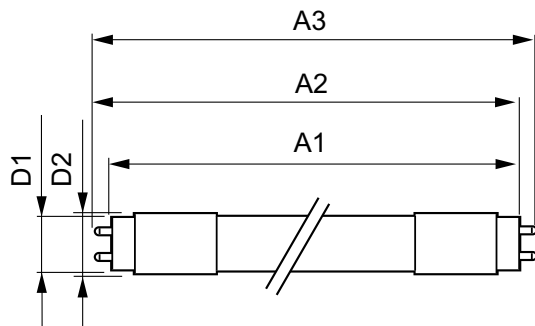
| LLMF at end of nominal lifetime (nom.) 70 % |             |
|---|-------------|
| Operating and Electrical                    |             |
| Input frequency                             | 50 to 60 Hz |
| Power (Rated) (Nom)                         | 12 W        |
| Lamp current (max.)                         | 57 mA       |
| Lamp current (min.)                         | 51 mA       |
| Starting time (nom.)                        | 0.5 s       |
| Warm-up time to 60% light (nom.)            | 0.5 s       |
| Power factor (nom.)                         | 0.9         |
| Voltage (Nom)                               | 220-240 V   |
| Temperature                                 |             |
| T-ambient (max.)                            | 45 °C       |
| T-ambient (min.)                            | -20 °C      |
| T storage (max.)                            | 65 °C       |
| T storage (min.)                            | -40 °C      |

# MASTER LEDtube EM/Mains

|                                 |  |
|---------------------------------|--|
| T-Case maximum (nom.)           | 50 °C  |
| <b>Controls and Dimming</b>     |  |
| Dimmable                        | No   |
| <b>Mechanical and Housing</b>   |  |
| Bulb material                   | Plastic  |
| Product length                  | 900 mm   |
| <b>Approval and Application</b> |  |
| Energy efficiency label (EEL)   | A++  |
| Energy-saving product           | Yes  |
| Approval marks                  | CE marking RoHS compliance KEMA Keur certificate |

|                                     |                                    |
|-------------------------------------|------------------------------------|
| Energy consumption kWh/1,000 hours  | 12 kWh                             |
| <b>Product Data</b>                 |                                    |
| Full product code                   | 871869668710900                    |
| Order product name                  | MASTER LEDtube 900mm HO 12W 865 T8 |
| EAN/UPC – product                   | 8718696687109                      |
| Order code                          | 68710900                           |
| Numerator – quantity per pack       | 1                                  |
| SAP numerator – packs per outer box | 10                                 |
| Material no. (12 NC)                | 929001298502                       |
| Net Weight (Piece)                  | 0.174 kg                           |

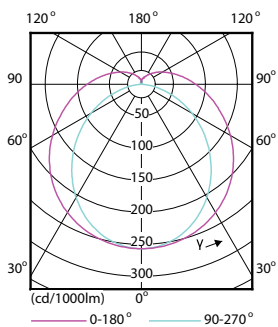
## Dimensional drawing



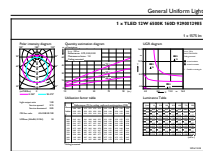
TLED 3ft 12W-30W 1575lm 160D 6500K G13ND

| Product                            | D1       | D2    | A1       | A2       | A3       |
|------------------------------------|----------|-------|----------|----------|----------|
| MASTER LEDtube 900mm HO 12W 865 T8 | 25.78 mm | 28 mm | 893.3 mm | 900.4 mm | 907.5 mm |

## Photometric data



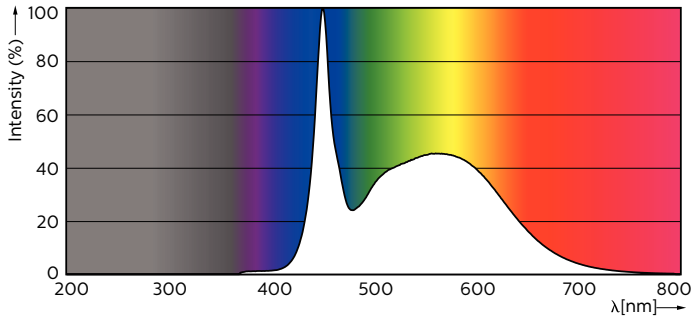
LEDtube 600mm 1200mm 1500mm UO T8



LEDtube 900mm HO 12W865 T8

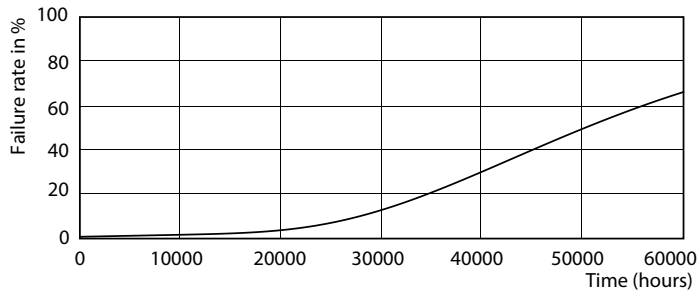
# MASTER LEDtube EM/Mains

## Photometric data

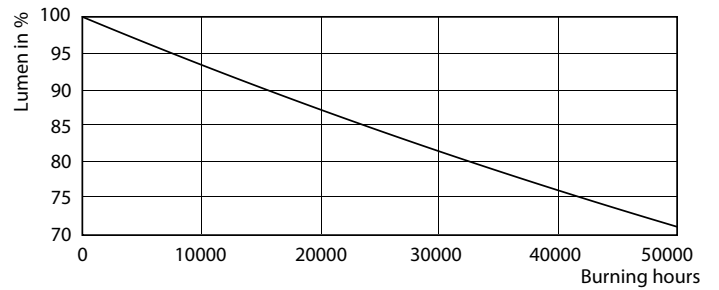


LEDtube 900mm HO 12W865 T8

## Lifetime



LEDtube 600mm 1200mm 1500mm UO T8



LEDtube 600mm 1200mm 1500mm UO T8

