



MASTER LEDtube EM/ Mains

MASTER LEDtube 1500mm UE 21.5W 840 T8

The Philips MASTER LEDtube integrates a LED light source into a traditional fluorescent form factor. Its unique design creates a perfectly uniform visual appearance which cannot be distinguished from traditional fluorescent. For those that are looking for value for money within limited budget and re-lamping efforts for better light effect and lifetime.

Warnings and Safety

• -

Product data

| General Information | |
|-------------------------------------|--|
| Cap base | G13 ROT (Rotating) [Medium Bi-Pin Fluorescent] |
| EU RoHS compliant | Yes |
| Nominal lifetime (nom.) | 70000 h |
| Switching cycle | 200,000X |
| Light Technical | |
| Colour Code | 841 [CCT of 4100K (841)] |
| Beam Angle (Nom) | 160 ° |
| Luminous flux (nom.) | 3700 lm |
| Colour designation | Cool White (CW) |
| Correlated Colour Temperature (Nom) | 4000 K |
| Luminous efficacy (rated) (nom.) | 172.00 lm/W |
| Colour consistency | <6 |
| Colour rendering index (nom.) | 83 |

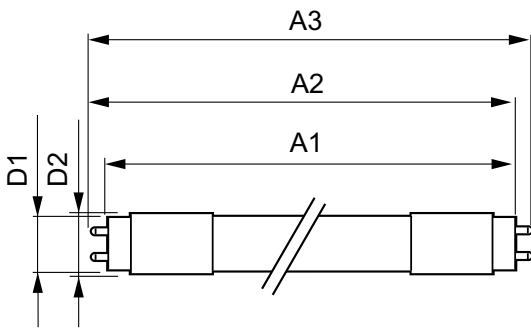
| LLMF at end of nominal lifetime (nom.) 70 % | |
|---|-------------|
| Operating and Electrical | |
| Input frequency | 50 to 60 Hz |
| Power (Rated) (Nom) | 21.5 W |
| Lamp current (max.) | 111 mA |
| Lamp current (min.) | 83 mA |
| Starting time (nom.) | 0.5 s |
| Warm-up time to 60% light (nom.) | 0.5 s |
| Power factor (nom.) | 0.9 |
| Voltage (Nom) | 220-240 V |
| Temperature | |
| T-ambient (max.) | 35 °C |
| T-ambient (min.) | -20 °C |
| T storage (max.) | 65 °C |
| T storage (min.) | -40 °C |

MASTER LEDtube EM/Mains

| | |
|---------------------------------|--|
| T-Case maximum (nom.) | 60 °C |
| Controls and Dimming | |
| Dimmable | No |
| Mechanical and Housing | |
| Bulb material | Plastic |
| Product length | 1500 mm |
| Approval and Application | |
| Energy efficiency label (EEL) | A++ |
| Energy-saving product | Yes |
| Approval marks | CE marking RoHS compliance KEMA Keur certificate |

| | |
|------------------------------------|---------------------------------------|
| Energy consumption kWh/1,000 hours | 22 kWh |
| Product Data | |
| Full product code | 871869673154300 |
| Order product name | MASTER LEDtube 1500mm UE 21.5W 840 T8 |
| EAN/UPC – product | 8718696731543 |
| Order code | 73154300 |
| SAP numerator – quantity per pack | 1 |
| Numerator – packs per outer box | 10 |
| SAP material | 929001377002 |
| SAP net weight (piece) | 0.270 kg |

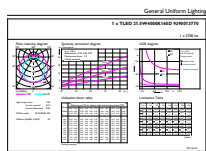
Dimensional drawing



TLED 5ft 21.5-58W 3700lm 4000K G13 ND

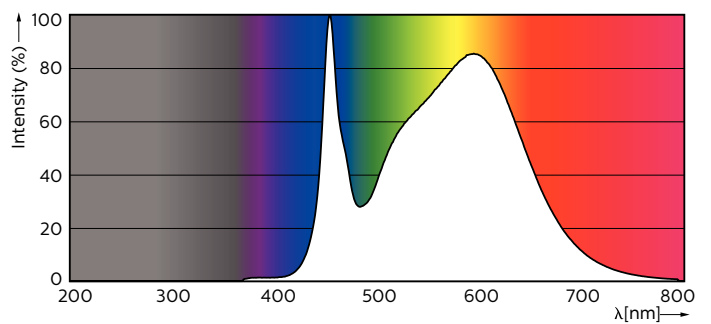
| Product | D1 | D2 | A1 | A2 | A3 |
|---------------------------------------|---------|-------|-----------|-----------|---------|
| MASTER LEDtube 1500mm UE 21.5W 840 T8 | 25.8 mm | 28 mm | 1498.8 mm | 1505.9 mm | 1513 mm |

Photometric data



General Uniform Lighting
1 x T840 in 1500mm tube (3700lm)
Page 11

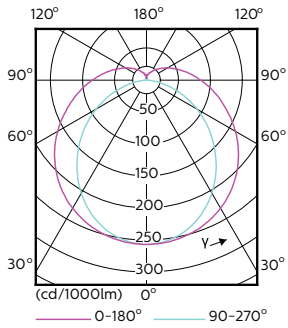
LEDtube 1500mm 22W G13 840 3700lm



LEDtube 1500mm 22W G13 840 3700lm

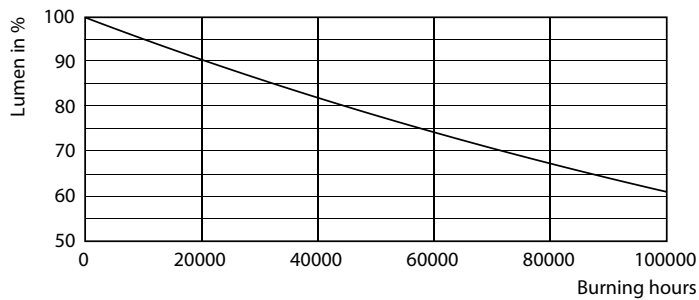
MASTER LEDtube EM/Mains

Photometric data

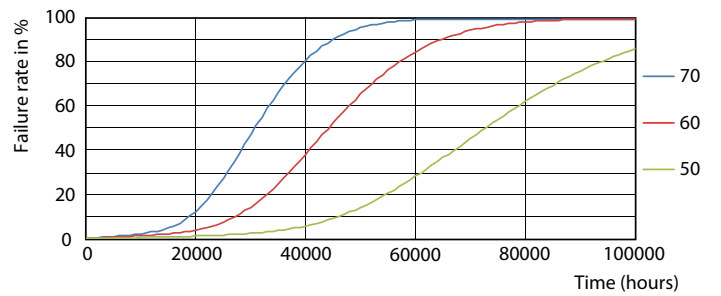


LEDtube 1200mm 15W G13 840 2500lm

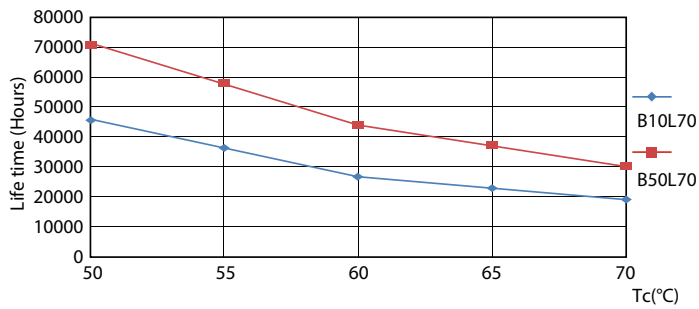
Lifetime



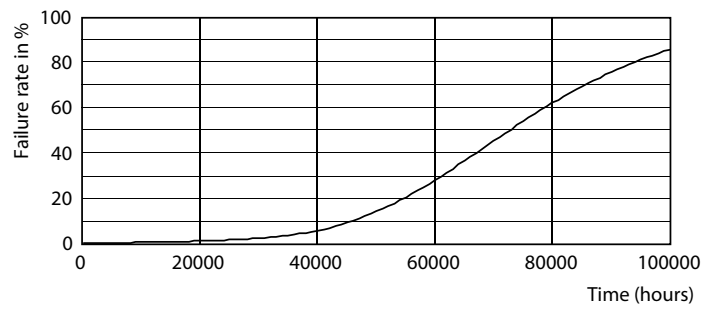
LEDtube G13 ND



LEDtube G13 ND FailureRate



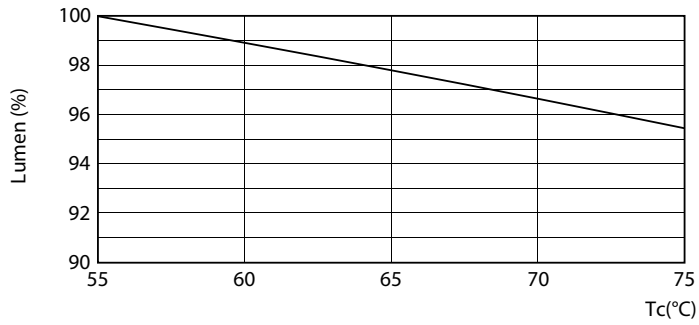
LEDtube G13 ND LifetimeVsTc



LEDtube G13 ND

MASTER LEDtube EM/Mains

Lifetime



LEDtube G13 21.5W ND LumenVsTc

