

MasterConnect LEDtube EM/Mains T8

MASTERConnect LEDtube IA 1500mm UO 25.5W840 T8

Philips MasterConnect LEDtube EM/Mains T8 makes it easy to upgrade to a connected lighting system. Its 2.4 GHz mesh networking technology enables wireless integration with a variety of control devices, such as sensors and switches. The result? Even more energy saving and enhanced flexibility in your space. Through dimming, occupancy sensing and/or daylight harvesting, lamps deliver 50% or more energy saving thanks to MasterConnect technology.

Product data

General Information	
Cap base	G13 [Medium Bi-Pin Fluorescent]
EU RoHS compliant	Yes
Nominal lifetime (nom.)	50000 h
Switching cycle	200,000X
Light Technical	
Colour Code	841 [CCT of 4100K (841)]
Beam Angle (Nom)	160 °
Luminous flux (nom.)	3700 lm
Colour designation	Cool White (CW)
Correlated Colour Temperature (Nom)	4000 K
Luminous efficacy (rated) (nom.)	145.10 lm/W
Colour consistency	<6
Colour rendering index (nom.)	83
LLMF at end of nominal lifetime (nom.)	70 %

Operating and Electrical	
Input frequency	50 to 60 Hz
Power (Rated) (Nom)	25.5 W
Lamp current (max.)	117 mA
Lamp current (min.)	108 mA
Starting time (nom.)	0.5 s
Warm-up time to 60% light (nom.)	0.5 s
Power factor (nom.)	0.9
Voltage (Nom)	220-240 V
Temperature	
T-ambient (max.)	45 °C
T-ambient (min.)	-20 °C
T storage (max.)	65 °C
T storage (min.)	-40 °C
T-Case maximum (nom.)	45 °C

MasterConnect LEDtube EM/Mains T8

Controls and Dimming

Dimmable Wireless Dim

Mechanical and Housing

Product length 1500 mm

Approval and Application

Energy efficiency label (EEL) A++

Energy-saving product Yes

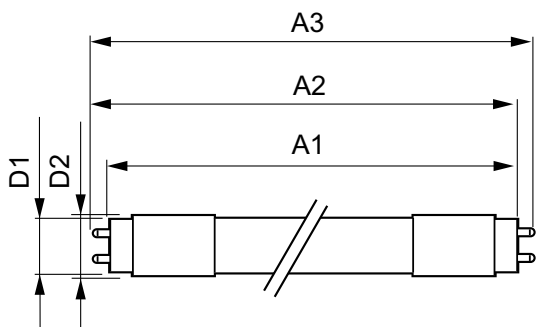
Approval marks CE marking RoHS compliance KEMA Keur certificate

Energy consumption kWh/1,000 hours 26 kWh

Product Data

Full product code	871869677350500
Order product name	MASTERConnect LEDtube IA 1500mm UO 25.5W840 T8
EAN/UPC – product	8718696773505
Order code	77350500
Numerator – quantity per pack	1
Numerator – packs per outer box	10
SAP material	929001814102
SAP net weight (piece)	0.310 kg

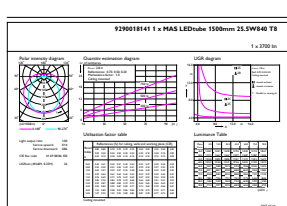
Dimensional drawing



TLED 1500mm 24.5W 3700lm 4000K G13 D

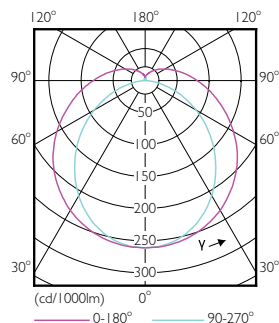
Product	D1	D2	A1	A2	A3
MASTERConnect LEDtube IA 1500mm UO 25.5W840 T8	25.7 mm	28 mm	1500 mm	1507.1 mm	1514.2 mm

Photometric data



CadaluX Proometrics 4.5 Philips Lighting B.V. Page 1/17

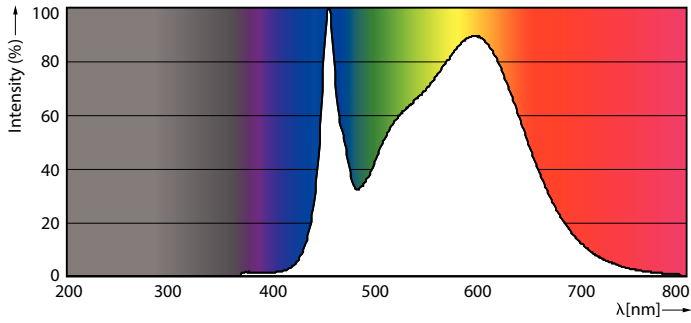
25-5W G13 840 4000K



16-5W G13 830 3000K

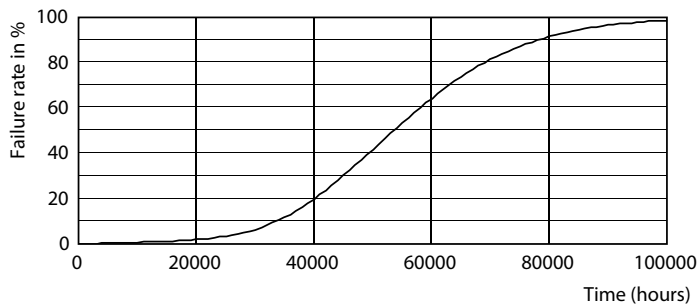
MasterConnect LEDtube EM/Mains T8

Photometric data

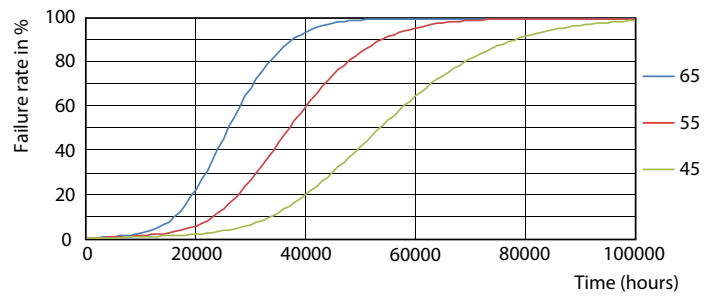


25-5W G13

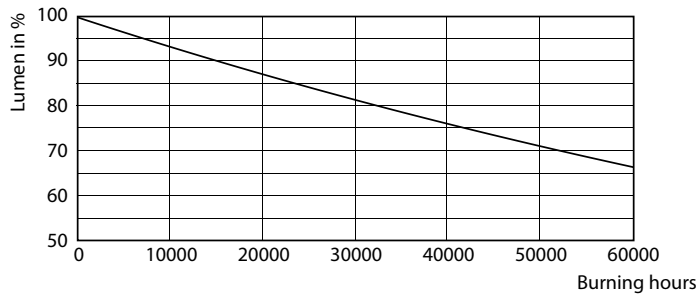
Lifetime



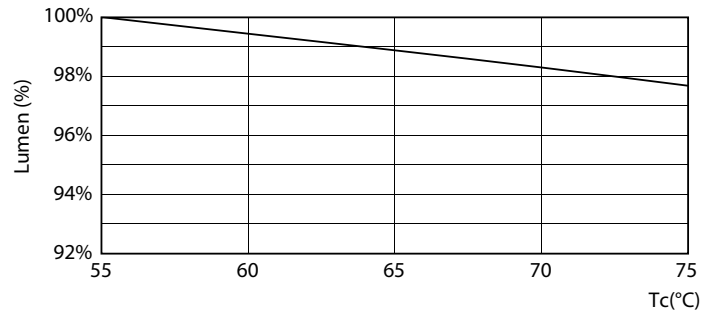
16-5W G13



16-5W G13



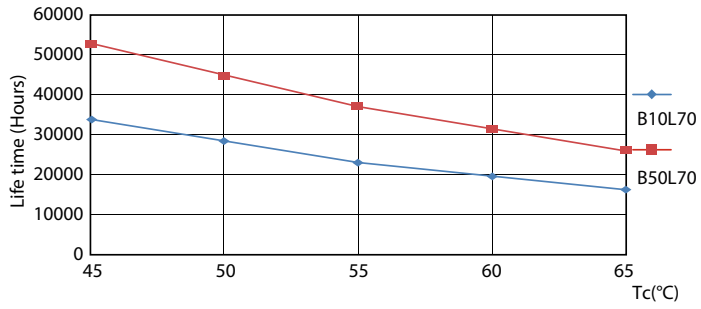
16-5W G13



16-5W G13

MasterConnect LEDtube EM/Mains T8

Lifetime



16-5W G13

