



MASTER LEDtube EM/ Mains

MASTER LEDtube 1200mm HO VWV 18W 840 T8

The Philips MASTER LEDtube integrates a LED light source into a traditional fluorescent form factor. Its unique design creates a perfectly uniform visual appearance which cannot be distinguished from traditional fluorescent. For those that are looking for value for money within limited budget and re-lamping efforts for better light effect and lifetime.

Warnings and Safety

• -

Product data

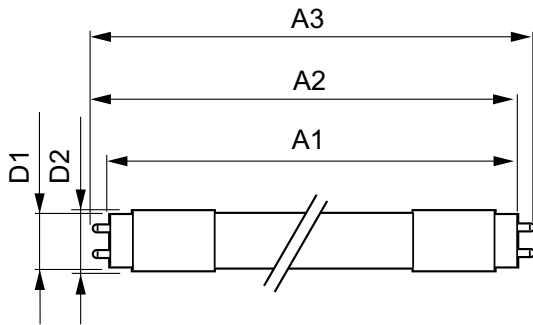
General Information		LLMF at end of nominal lifetime (nom.) 70 %	
Cap base	G13 [Medium Bi-Pin Fluorescent]	Operating and Electrical	
EU RoHS compliant	Yes	Input frequency	50 to 60 Hz
Nominal lifetime (nom.)	60000 h	Power (Rated) (Nom)	18 W
Switching cycle	200,000X	Lamp current (max.)	183 mA
Technical type	18-32-36W	Lamp current (min.)	69 mA
Light Technical		Starting time (nom.)	0.5 s
Colour Code	841 [CCT of 4100K (841)]	Warm-up time to 60% light (nom.)	0.5 s
Beam Angle (Nom)	160 °	Power factor (nom.)	0.90
Luminous flux (nom.)	2100 lm	Voltage (Nom)	100-277 V
Colour designation	Cool White (CW)	Temperature	
Correlated Colour Temperature (Nom)	4000 K	T-ambient (max.)	45 °C
Luminous efficacy (rated) (nom.)	116.00 lm/W	T-ambient (min.)	-20 °C
Colour consistency	<6	T storage (max.)	65 °C
Colour rendering index (nom.)	80	T storage (min.)	-40 °C

MASTER LEDtube EM/Mains

T-Case maximum (nom.)	60 °C
Controls and Dimming	
Dimmable	No
Mechanical and Housing	
Product length	1200 mm
Approval and Application	
Energy efficiency label (EEL)	A+
Energy-saving product	Yes
Approval marks	RoHS compliance CE marking UL certificate KEMA Keur certificate
Energy consumption kWh/1,000 hours	18 kWh

Product Data	
Full product code	87186968119100
Order product name	MASTER LEDtube 1200mm HO VWV 18W 840 T8
EAN/UPC – product	871869681191
Order code	8119100
Numerator – quantity per pack	1
SAP numerator – packs per outer box	10
Material no. (12 NC)	929001877312
Net Weight (Piece)	0.220 kg

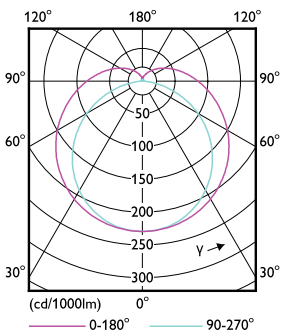
Dimensional drawing



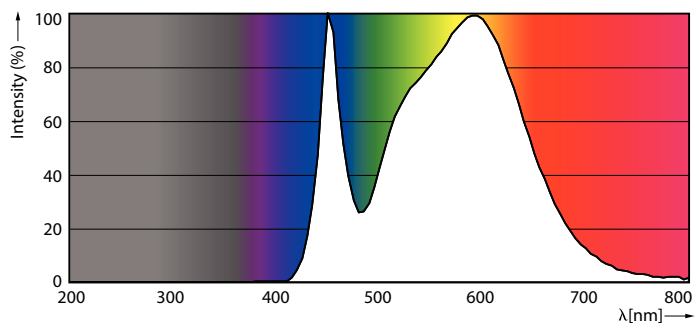
TLED Master 100-277V 2100lm 18W4ft 4000K

Product	D1	D2	A1	A2	A3
MASTER LEDtube 1200mm HO VWV 18W 840 T8	25.8 mm	28 mm	1198.2 mm	1205.3 mm	1212.4 mm

Photometric data



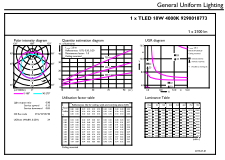
LEDtube_G13_2



LEDtube_18W_G13_2100lm_840

MASTER LEDtube EM/Mains

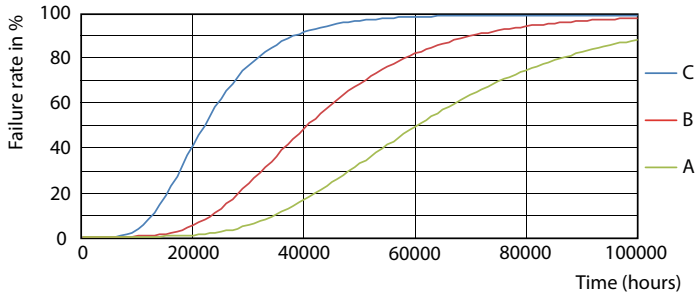
Photometric data



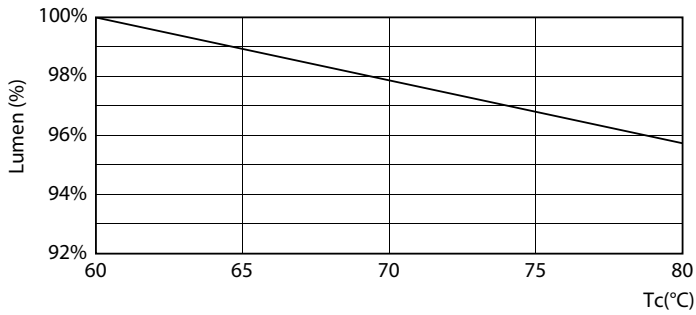
© 2020 Philips Lighting B.V. Page 10

LEDtube_18W_G13_2100lm_840_1

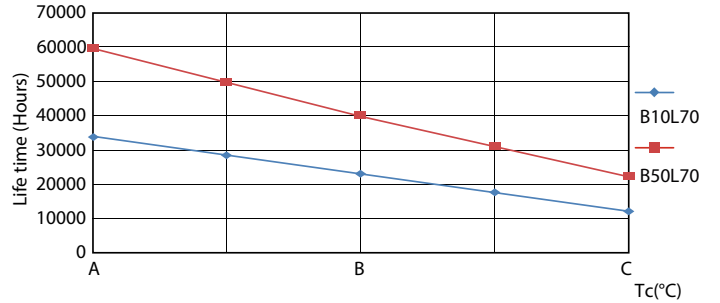
Lifetime



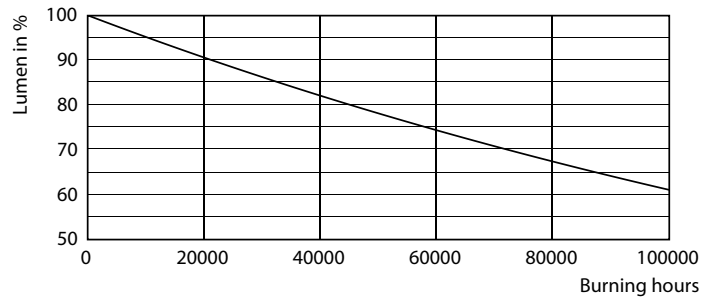
LEDtube_60K_FailureRate



LEDtube_60K_LumenVsTc



LEDtube_60K_LifetimeVsTc



LEDtube_60K

MASTER LEDtube EM/Mains

Lifetime



LEDtube_60K

