



MASTER LEDtube EM/ Mains

MASTER LEDtube 600mm HO VWV 10W 865 T8

The Philips MASTER LEDtube integrates a LED light source into a traditional fluorescent form factor. Its unique design creates a perfectly uniform visual appearance which cannot be distinguished from traditional fluorescent. For those that are looking for value for money within limited budget and re-lamping efforts for better light effect and lifetime.

Warnings and Safety

• -

Product data

General Information	
Cap base	G13 [Medium Bi-Pin Fluorescent]
EU RoHS compliant	Yes
Nominal lifetime (nom.)	60000 h
Switching cycle	200,000X
Technical type	10-17-18W

Light Technical	
Colour Code	865 [CCT of 6,500 K]
Beam Angle (Nom)	160 °
Luminous flux (nom.)	1050 lm
Colour designation	Cool Daylight
Correlated Colour Temperature (Nom)	6500 K
Luminous efficacy (rated) (nom.)	105,00 lm/W
Colour consistency	<6
Colour rendering index (nom.)	80

LLMF at end of nominal lifetime (nom.) 70 %	
---	--

Operating and Electrical	
Input frequency	50 to 60 Hz
Power (Rated) (Nom)	10 W
Lamp current (max.)	101 mA
Lamp current (min.)	38 mA
Starting time (nom.)	0.5 s
Warm-up time to 60% light (nom.)	0.5 s
Power factor (nom.)	0.90
Voltage (Nom)	100-277 V

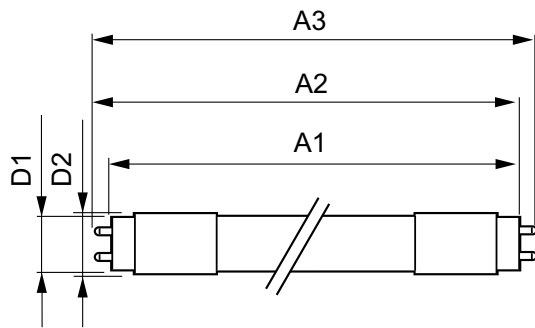
Temperature	
T-ambient (max.)	45 °C
T-ambient (min.)	-20 °C
T storage (max.)	65 °C
T storage (min.)	-40 °C

MASTER LEDtube EM/Mains

T-Case maximum (nom.)	60 °C
Controls and Dimming	
Dimmable	No
Mechanical and Housing	
Lamp Finish	Frosted
Product length	600 mm
Approval and Application	
Energy efficiency label (EEL)	A+
Energy-saving product	Yes
Approval marks	RoHS compliance CE marking UL certificate KEMA Keur certificate

Energy consumption kWh/1,000 hours	10 kWh
Product Data	
Full product code	871869681127600
Order product name	MASTER LEDtube 600mm HO VWV 10W 865 T8
EAN/UPC – product	8718696811276
Order code	81127600
Numerator – quantity per pack	1
SAP numerator – packs per outer box	10
Material no. (12 NC)	929001877612
Net Weight (Piece)	0.115 kg

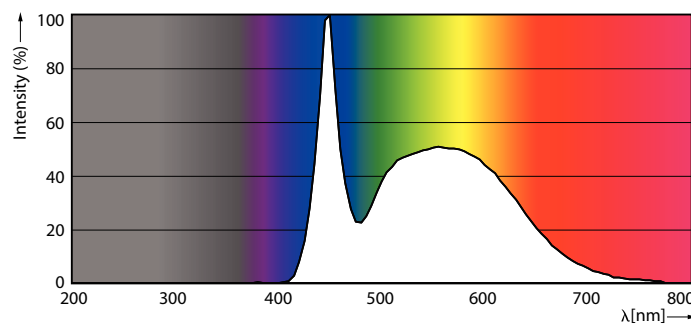
Dimensional drawing



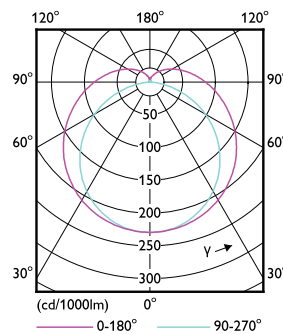
TLED Master 100-277V 1050lm 10W2ft 6500K

Product	D1	D2	A1	A2	A3
MASTER LEDtube 600mm HO VWV 10W 865 T8	25.8 mm	28 mm	588.6 mm	595.6 mm	602.6 mm

Photometric data



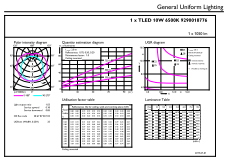
LEDtube_10W_G13_1050lm_865



LEDtube_G13_2

MASTER LEDtube EM/Mains

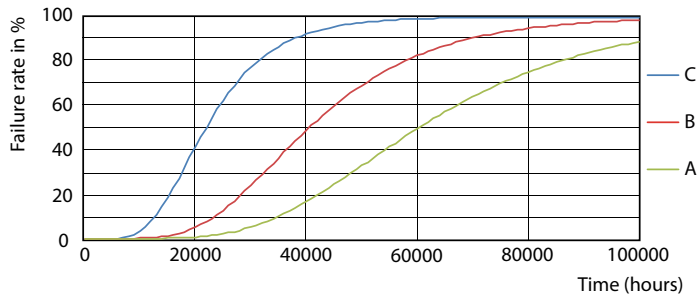
Photometric data



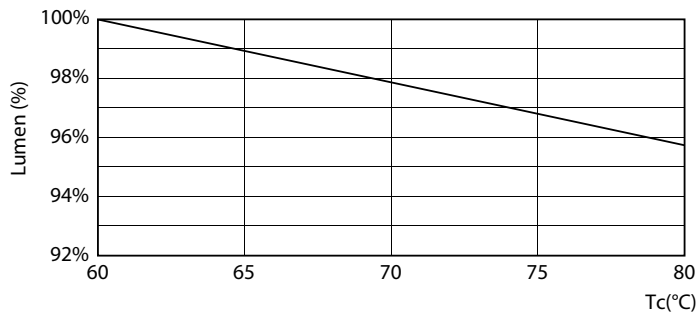
© 2021 Philips Lighting B.V. Page 10 of 11

LEDtube_10W_G13_1050lm_865

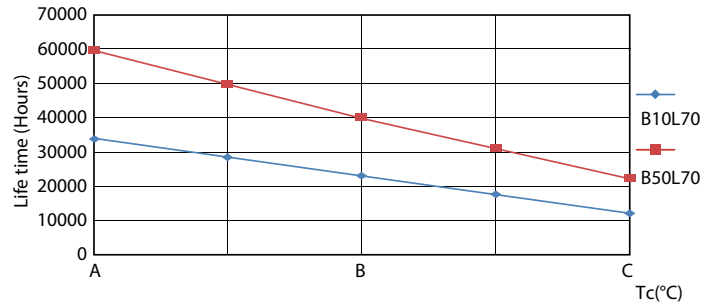
Lifetime



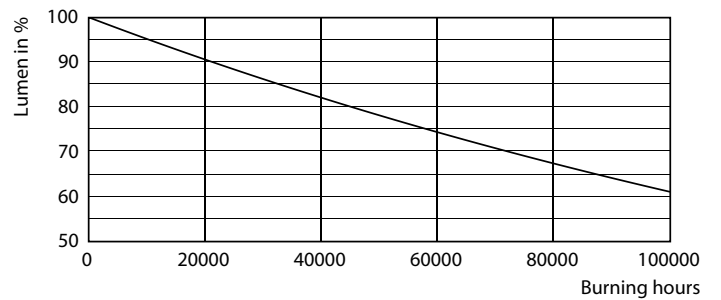
LEDtube_60K_FailureRate



LEDtube_60K_LumenVsTc



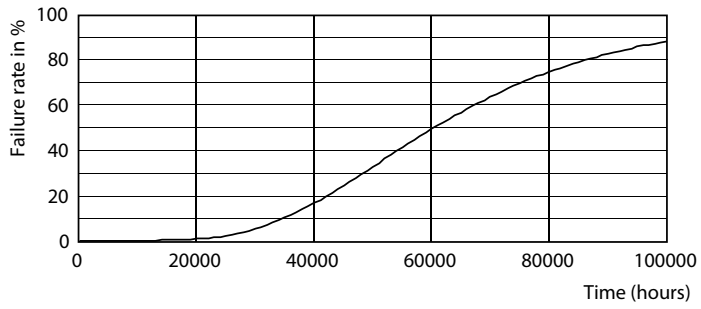
LEDtube_60K_LifetimeVsTc



LEDtube_60K

MASTER LEDtube EM/Mains

Lifetime



LEDtube_60K

