



MASTER LEDtube EM/ Mains

MASTER LEDtube 1200mm UO 15.5W 840 T8

The Philips MASTER LEDtube integrates a LED light source into a traditional fluorescent form factor. Its unique design creates a perfectly uniform visual appearance which cannot be distinguished from traditional fluorescent. For those that are looking for value for money within limited budget and re-lamping efforts for better light effect and lifetime.

Warnings and Safety

• -

Product data

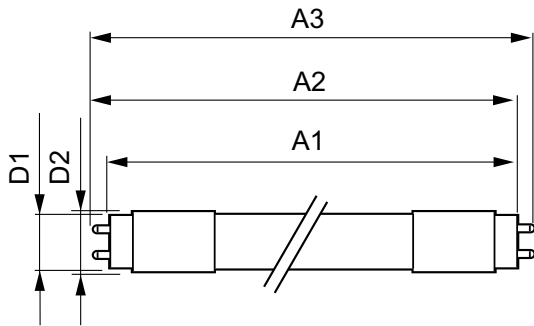
General Information		LLMF at end of nominal lifetime (nom.) 70 %	
Cap base	G13 ROT (Rotating) [Medium Bi-Pin Fluorescent]	Operating and Electrical	
EU RoHS compliant	Yes	Input frequency	50 to 60 Hz
Nominal lifetime (nom.)	60000 h	Power (Rated) (Nom)	15.5 W
Switching cycle	200,000X	Lamp current (max.)	73 mA
Light Technical		Lamp current (min.)	67 mA
Colour Code	841 [CCT of 4100K (841)]	Starting time (nom.)	0.5 s
Beam Angle (Nom)	160 °	Warm-up time to 60% light (nom.)	0.5 s
Luminous flux (nom.)	2500 lm	Power factor (nom.)	0.9
Colour designation	Cool White (CW)	Voltage (Nom)	220-240 V
Correlated Colour Temperature (Nom)	4000 K	Temperature	
Luminous efficacy (rated) (nom.)	161.00 lm/W	T-ambient (max.)	45 °C
Colour consistency	<6	T-ambient (min.)	-20 °C
Colour rendering index (nom.)	83	T storage (max.)	65 °C
		T storage (min.)	-40 °C

MASTER LEDtube EM/Mains

T-Case maximum (nom.)	55 °C
Controls and Dimming	
Dimmable	No
Mechanical and Housing	
Bulb material	Plastic
Product length	1200 mm
Approval and Application	
Energy efficiency label (EEL)	A++
Energy-saving product	Yes
Approval marks	RoHS compliance CE marking KEMA Keur certificate

Energy consumption kWh/1,000 hours	16 kWh
Product Data	
Full product code	871869964723000
Order product name	MASTER LEDtube 1200mm UO 15.5W 840 T8
EAN/UPC – product	8718699647230
Order code	64723000
Numerator – quantity per pack	1
SAP numerator – packs per outer box	10
Material no. (12 NC)	929002020602
Net Weight (Piece)	0.251 kg

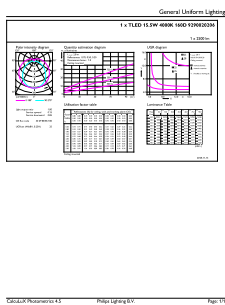
Dimensional drawing



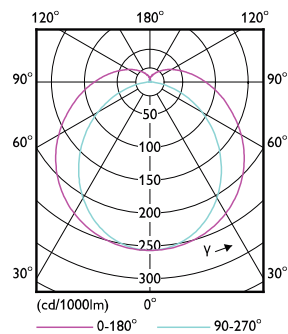
TLED 4ft 220-240V15.5-36W 2500lm4000KG13

Product	D1	D2	A1	A2	A3
MASTER LEDtube 1200mm UO 15.5W 840 T8	25.8 mm	28 mm	1198.2 mm	1205.3 mm	1212.4 mm

Photometric data



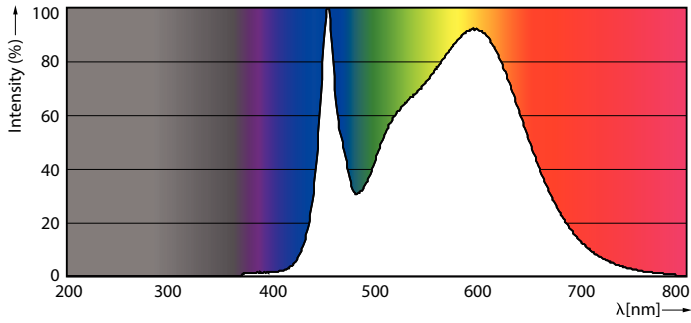
TLED_4ft_220-240V15.5-36W_2500lm_4000K_G13



TLED_4ft_220-240V15.5-36W_G13-LDD

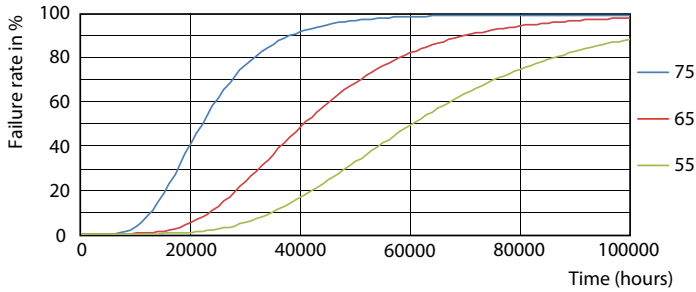
MASTER LEDtube EM/Mains

Photometric data

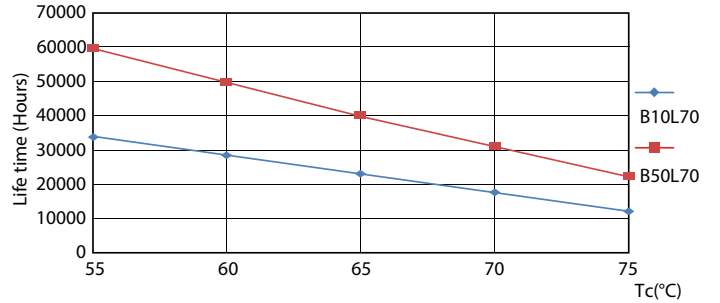


TLED_4ft_220-240V15.5-36W_2500lm_4000K_G13

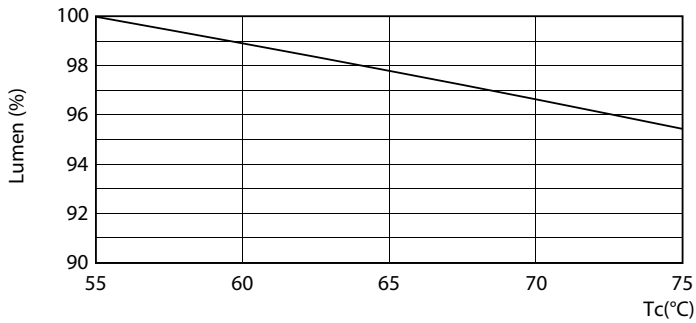
Lifetime



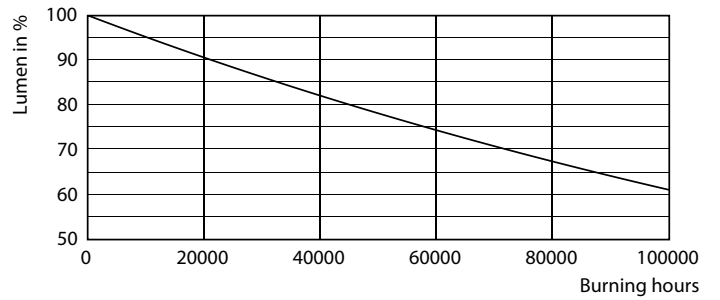
TLED_220-240V_G13-FailureRate



TLED_220-240V_G13-LifetimeVsTc



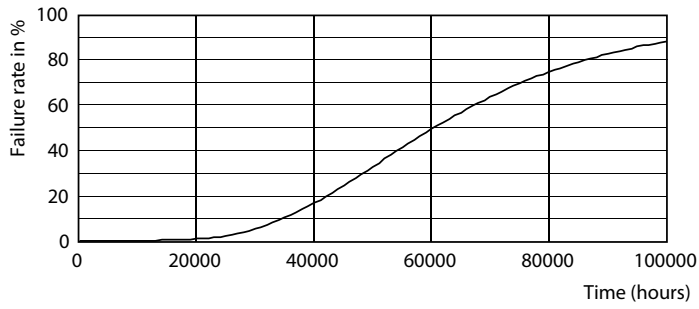
TLED_220-240V_G13-LumenVsTc



TLED_220-240V_G13

MASTER LEDtube EM/Mains

Lifetime



TLED_220-240V_G13

