

# Master Value LEDtube T8

## MASTER LEDtube VLE 600mm HO 8W 840 T8

A high-performance LED solution, the professional Master Value LED tube is ideal for replacing T8 fluorescent lamps using EM ballast or installing directly on the mains. This product provides a uniform lighting effect for use in all general lighting, as well as instant energy-efficiency, making for an environmentally friendly solution.

### Product data

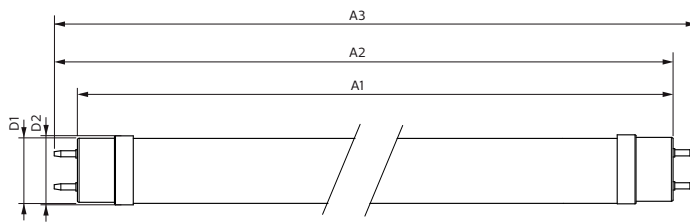
General Information		Lamp current (max.)	
Cap base	G13 [ Medium Bi-Pin Fluorescent]		38 mA
EU RoHS compliant	Yes	Lamp current (min.)	34 mA
Nominal lifetime (nom.)	50000 h	Starting time (nom.)	0.5 s
Switching cycle	200,000X	Warm-up time to 60% light (nom.)	0.5 s
Light Technical		Power factor (nom.)	0.9
Colour Code	841 [ CCT of 4100K (841)]	Voltage (Nom)	220-240 V
Beam Angle (Nom)	240 °	Temperature	
Luminous flux (nom.)	1050 lm	T-ambient (max.)	45 °C
Colour designation	Cool White (CW)	T-ambient (min.)	-20 °C
Correlated Colour Temperature (Nom)	4000 K	T storage (max.)	65 °C
Luminous efficacy (rated) (nom.)	131.00 lm/W	T storage (min.)	-40 °C
Colour consistency	<6	T-Case maximum (nom.)	50 °C
Colour rendering index (nom.)	83	Controls and Dimming	
LLMF at end of nominal lifetime (nom.)	70 %	Dimmable	No
Operating and Electrical		Mechanical and Housing	
Input frequency	50 to 60 Hz	Bulb material	Glass
Power (Rated) (Nom)	8 W		

# Master Value LEDtube T8

Product length	600 mm
<b>Approval and Application</b>	
Energy efficiency label (EEL)	A++
Energy-saving product	Yes
Approval marks	RoHS compliance CE marking KEMA Keur certificate
Energy consumption kWh/1,000 hours	8 kWh
<b>Product Data</b>	
Full product code	871869964681300

Order product name	MASTER LEDtube VLE 600mm HO 8W 840 T8
EAN/UPC – product	8718699646813
Order code	64681300
Numerator – quantity per pack	1
Numerator – packs per outer box	10
SAP material	929002021202
SAP net weight (piece)	0.120 kg

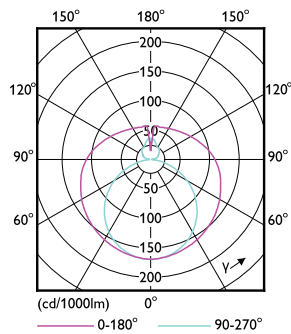
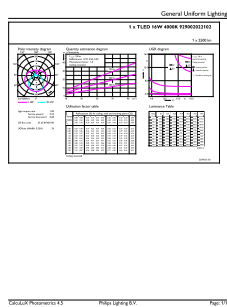
## Dimensional drawing



Product	D1	D2	A1	A2	A3
MASTER LEDtube VLE 600mm HO 8W 840 T8	25.8 mm	28 mm	588.5 mm	595.5 mm	602.5 mm

## TLED 2ft 220-240V 8-18W 1050lm 4000K G13

## Photometric data

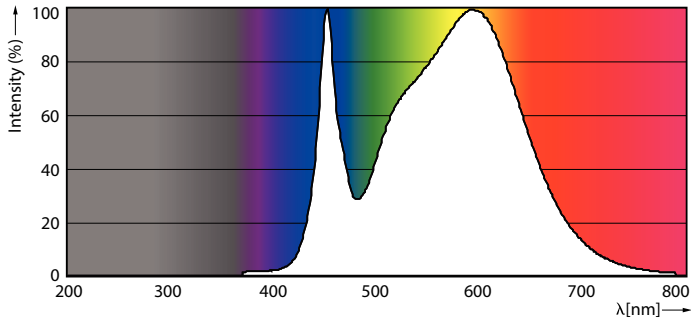


## LEDtube 220-240V G13 2ft 1050lm 4000k

## LEDtube 220-240V G13

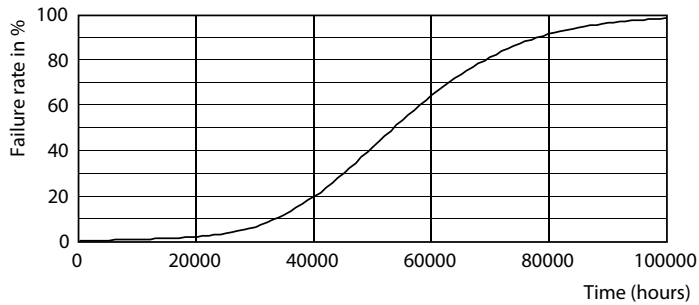
# Master Value LEDtube T8

## Photometric data

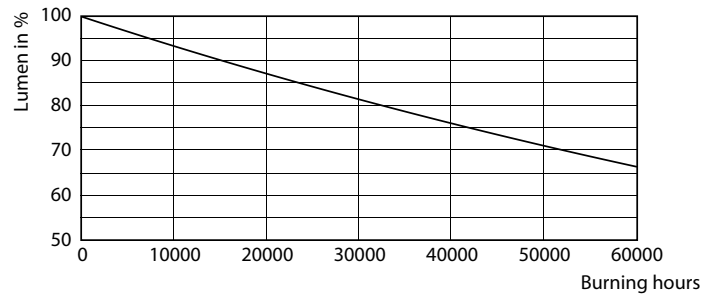


LEDtube 220-240V G13 4000k

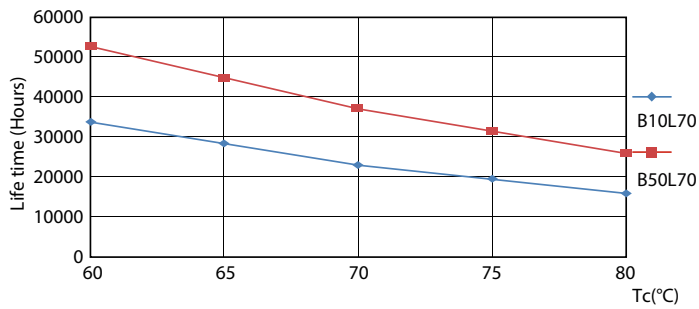
## Lifetime



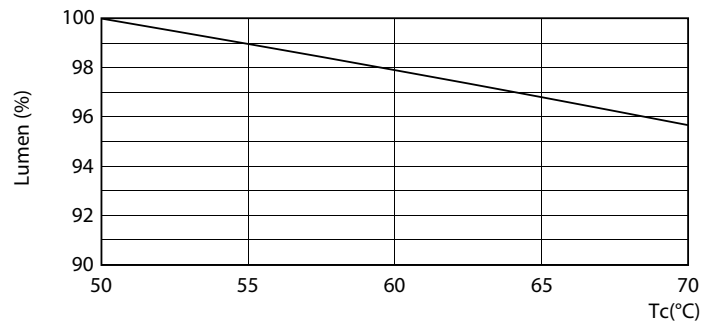
LEDtube 220-240V G13



LEDtube 220-240V G13



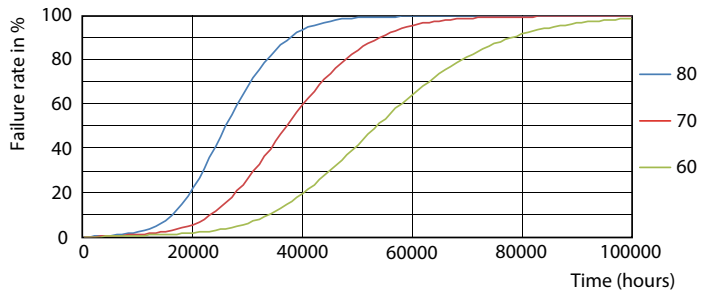
LEDtube 220-240V G13 LifetimeVsTc



LEDtube 220-240V G13 2ft LumenVsTc

# Master Value LEDtube T8

## Lifetime



LEDtube 220-240V G13 FailureRate

